

WOOTTON VALLEY NEWS

WWW.WOOTTON.ORG.AU

FEBRUARY/MARCH 2025

NO. 154

PUBLISHED BY

WOOTTON COMMUNITY NETWORK INC.

DISTRIBUTION: WOOTTON • BULAHDELAH

Arriving in letter boxes every second month.

PHOTO JO LYONS PHOTOGRAPHY



SHAPING THE [heart icon] OF OUR COMMUNITY

**JOIN US ON SATURDAY, 8 FEBRUARY, AT 10:30 AM
FOR MORNING TEA**

Our community has something to celebrate! **The Wootton Community Resource Centre and Brush Turkey Cafe** has been our meeting place and hub for over 20 years. It is amazing to read past issues of this newsletter (on our website) and digest the diversity of activities and events that have been hosted here. We are having a morning tea to celebrate its 20th year and ask for community engagement on setting its future direction. We all have a part to play and say.

We all want to hear your ideas about how the space could be used. Come and hear about the wonderful activities already

happening in our area, like the library, fitness group, yoga, food swaps, art group and community events.

Stick around after the session for the **Food Swap** and connect with others in our community.

Contribute to a potluck lunch if you'd like to stay longer and share a meal with your neighbours!

Nothing is off the table – we welcome all ideas, big and small. We look forward to working together to create something truly special.

WOOTTON COMMUNITY NETWORK

CAN'T MAKE IT IN PERSON, BUT STILL WANT TO SHARE YOUR IDEAS? COMPLETE THE SURVEY HERE <https://tinyurl.com/WC8Feb> AND SHARE YOUR FEEDBACK OR EMAIL SECRETARY@WOOTTON.ORG.AU

KEEP UP TO DATE @ WWW.WOOTTON.ORG.AU

WOOTTON COMMUNITY NETWORK

CELEBRATING 20 YEARS A SPECIAL MOMENT OF COMMUNITY IN ACTION

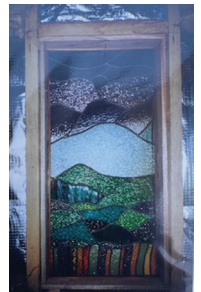
In June 2004, the WCN Newsletter (#30), called the opening of our Brush Turkey Cafe, on the June long weekend, the “most exciting event” and thanked many volunteers for their building of our cafe. “Four years and over 5 000 hours voluntary work put into the project is finally coming to fruition” while over 20 volunteers were trained up to; “man this wonderful community venture”.

The Grand opening was a gala affair on November 6, 2004 with the mayor John Chadban doing the honours. Music by Peter Kershaw (on harp) and members of the Rhumb Line.

The Lemon Myrtle cheesecake has been a constant menu item!

A wonderful insight into the passion of the volunteers is worth a read in Issue 32, page 4 of our newsletter ‘Ben the Barista, the blue tongue lizard and Rock Pearl chef’ by Pat Tate who regales a day volunteering at the cafe. A gem of a story which ends with a poem;

*“Come to the Brush
Turkey Cafe
For bush style hospitality,
On the Old Highway before
the Great Lakes Winery,
Meet great people at
Wootton’s top eatery”*



**Says it all really, a wonderful community
contribution, thank you!**



PHOTOS FROM OUR RECORDS AT
THE CAFE



2024 PRESIDENT'S MESSAGE

Nicole Turnbull

As we wrap up another year, I want to take a moment to reflect on our progress and share some achievements over the last 12 months.

- We've seen a steady increase in community events throughout the year, bringing us closer together and keeping our network active. We had lots of laughs at the recent Trivia night, raised money at the Biggest Morning Tea, had a couple of working bee's and BBQs and a great Christmas get together last year with entertainment from the wonderful Kelly Hope



- In July, we welcomed Knowla Keen to the Brush Turkey Cafe, she has been a wonderful addition to the community, even bringing back a revamped version of the infamous Lemon Myrtle cheesecake!
- While artwork exhibitions and sales slowed during the café's vacancy, we look forward to a revitalisation now.
- I'm pleased to report that the Schoolmaster's Cottage underwent significant repairs and improvements and we now have new tenants providing crucial income for WCN.
- Growing our membership will be a key focus in the coming year to strengthen our community and ensure long-term sustainability - and more fun events!

None of this could have been achieved without the incredible Committee—a huge thank you to Andrew Holland, Leanne Wright, Carol Bridge, Vic Norman, Susanne Kennedy and Gary Cross. Thank you to all the volunteers who help design, proof read and distribute the newsletter, attend the working bees and provide support, not only to the Committee, but to our neighbours in the wider Wootton community.

We welcome Paul Smith onto the Committee in 2025.

Stuart and I have only been here for 3 years, but we honestly Wootton Want to be anywhere else!

We wish you a happy 2025.



JUNKYARD FITNESS is a community fitness and healthy mindset initiative run entirely by volunteers, led by Wootton local Neal Lyons. All proceeds go directly to the Wootton Community Network (WCN) to assist with facility maintenance costs.

The goal of Junkyard Fitness is to enhance physical and mental well-being while fostering community connections through exercise.

Outdoor circuit classes are held on the WCN tennis courts (weather permitting), combining resistance and functional movements with light weights. The exercises are designed to be suitable

for all ages and abilities, incorporating both isotonic and isometric movements. "I like to focus on core and abdominal strength," Neal says, "but I'll adjust exercises to suit participants' needs. You can take it at your own pace, whether that's gentle or more intense. I also apologise in advance for my choice of 80s music!"

CLASS DETAILS:

When: Saturdays, 7:30–8:30 am in summer, 8:00–9:00 am in winter

Cost: \$15 for WCN members, \$20 for non-members. Your first class is free!

Bookings are essential. Visit our Facebook page at

<https://www.facebook.com/share/1627jGsCWw/?mibextid=wwXlfr> for more

details. NOTE: If you have injuries or medical conditions, please consult your doctor before participating to ensure this type of exercise is right for you.

WHAT'S ON? FEBRUARY/MARCH 2025

SAT 8 FEB	10.30 AM	COMMUNITY FORUM & MORNING TEA. ALL WELCOME
SAT 8 FEB	12 PM	WOOTTON FOOD SWAP in shelter shed/hall. Pot luck lunch. Peter D 0478 741 111.
SUN 9 DEC	8 AM	RFS training at Wootton Fire Brigade Shed, Squires Rd.
TUES 11 FEB	10 AM	WCN COMMITTEE MEETING in Community Hall. All welcome
FRI 21 FEB	10 AM- 12 PM	WOOTTON COMMUNITY LIBRARY open in Community Hall
SAT 8 MAR	12 PM	WOOTTON FOOD SWAP in shelter shed/hall. Peter D 0478 741 111
SUN 9 MAR	10 AM	RFS training at Wootton Fire Brigade Shed, Squires Rd.
TUE 11 MAR	10 AM	WCN COMMITTEE MEETING in Community Hall. All welcome
SAT 15 MAR		March copy deadline for next edition WVN (155)
FRI 21 MAR	10 AM- 12 PM	WOOTTON COMMUNITY LIBRARY open in Community Hall
SAT 29 MAR	TBC	SAVE THE DATE Dinner and Trivia night. Further details- to follow.

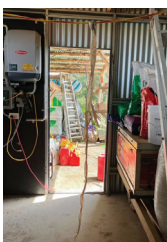
THE DETAILS OF ALL EVENTS WILL BE CONFIRMED ON SOCIAL MEDIA AND CONDUCTED IN ACCORDANCE WITH PUBLIC HEALTH ORDERS



YEAR OF THE SNAKE!

Let's first celebrate the lovely Diamond Pythons who have emerged this summer! Photos: top, Nicole Turnbull and below—not sure what snake this belonged to, but this shed-skin was in the shed of Victoria Norman was pretty BIG! **Take care! Download the pdf below.**

https://stjohn.org.au/assets/uploads/fact%20sheets/english/Fact%20sheets_snake%20bite.pdf



COMMUNITY ANNOUNCEMENT: THE BRUSH TURKEY CAFE IS TEMPORARILY CLOSED

We appreciate the effort Knowla Keen put into running the café over the past months. Her dedication brought life and warmth to the space.

We wish Knowla every success in her new venture, an exciting opportunity, and we're confident she'll thrive in this next chapter.

COME ALONG ON FEB 8TH TO OUR MORNING TEA TO DISCUSS OUR FUTURE CAFE (see page 1).

MEET YOUR COMMUNITY

MEET OUR NEW RESIDENTS ALI AND ROB METCALFE

Ali and Rob have moved here from Manly in Sydney. They already knew a bit about Wootton as they had holidayed at Blueys for years with their kids and have good friends here. Having met Renee Spiteri, real estate agent and now next door neighbour, they were shown around their property, realised the opportunity to get this small acreage would not come up very often, and moved quickly.

They love; sitting with a sundowner in hand and looking north over the hills as the sun sets, having access to the most beautiful coastline in the world, and putting in a good day's labour on the land! Between them they enjoy golf, tennis, cycling — anything outdoors— and are also enjoying a better social life here than they had in the City.



Most of their land Rob says is “what Poms would call a ghyll, an old Norse word meaning woody valley or ravine. Our 8 acres has about one and a half acres of flat, and the rest is steep sided valley which is half wood half paddock.”

WOOTTON COMMUNITY LIBRARY

is open on the third Friday of each month from 10am until 12pm. Coffee and tea are available while you browse our selection of books, games, DVDs and puzzles.

The book locker situated on the hall verandah also contains a small selection of books for young and old

alike, and items are rotated regularly. These are available for borrowing outside of the library's opening hours.

Our shelves are currently overflowing, so we are unfortunately not able to accept any donations.

If you have any recent publications you'd like to donate in the future, please call the librarian, Carol on 0427751984 first.



OUR CELEBRATION OF WOOTTON

The special PLACE Exhibition is open until 8 March 2025

MANNING REGIONAL ART GALLERY, TAREE

This exhibition surveys the work of a group of artists who all reside in Wootton. Featuring painting, photography, sculpture, printmaking, soundscape and ceramics.

<https://mrag.midcoast.nsw.gov.au/Exhibitions/Future-Exhibitions/Wootton-Creative-Alliance-PLACE>

DIRECTORY

WOOTTON DIRECTORY CONTAINS IMPORTANT LOCAL CONTACTS.
ALWAYS DIAL 000 FOR EMERGENCY

WOOTTON COMMUNITY NETWORK

President: Nicole Turnbull
Secretary: Andrew Holland
Treasurer: Leanne Wright 4997 7201
Email: info@wootton.org.au
Food Swap: Peter Dixon 0478 741 111

WOOTTON CREATIVE ALLIANCE

wca@wootton.org.au

WOOTTON RURAL FIRE BRIGADE

Captain: Adam Garnett 0428 272 629
www.facebook.com/woottonrfs

MIDCOAST FIRE CONTROL

Burnoff notifications 1300 643 262
(24hour prior notice)

KARUAH GREAT LAKES LANDCARE

greatlakes@midcoast2tops.org.au
Joel Dunn 0401 932 533

WOOTTON - TOPI TOPI SUSTAINABLE FARMING GROUP

Fred Fetherston 0427 461 101

MIDCOAST COUNCIL: 6591 7222

STATE FORESTS Wauchope 6585 3744

BULAHDELAH POLICE 4940 7470

STATE EMERGENCY SERVICE 132 500

LOCAL LAND SERVICES

- Wild dogs Laurie Mullen 0407 785 007
- Rural Resilience Group:
Peter Brown 0437 671 459

NATIONAL PARKS & WILDLIFE 6591 0300

FAWNA WILDLIFE RESCUE 6581-4141

ELECTRICITY ESSENTIAL ENERGY 13 20 80

WOOTTON JUSTICES OF THE PEACE (JPS)

- Warren Richardson 0407 146 373
- Paul Spiteri 0407 298 954
- Renee Spiteri 0407 516 089
- Gary Cross 0418 251 090

BULAHDELAH WASTE FACILITY

OPENING HOURS

Tues 1-5pm, Fr 12-4pm, Sun 10-2pm

WOOTTON COMMUNITY HALL GROUNDS AND FACILITIES ARE AVAILABLE TO HIRE FOR PRIVATE FUNCTIONS

Bookings—all facilities
Celebrating something special? Running a Course or a Market?

Andrew Holland 0416 002 532

JOIN THE WOOTTON COMMUNITY NETWORK — ALL FEES DUE NOW FOR ONLY \$20 ANNUALLY

As we are a not-for-profit organisation, your membership helps to maintain and improve facilities and services in the community.

Members also get **discounted access** to events throughout the year

ALL WELCOME! Visit the Website

www.wootton.org.au

or Direct Deposit to **Wootton Community Network Inc.** CBA Forster BSB 062669

Account No 10250496 **INCL NAME**



SCAN THE QR CODE TO COME TO OUR WEBSITE.

PLEASE SEND US YOUR STORIES AND PHOTOS.

* ACCOMMODATION

WOOTTON GUEST HOUSE

Too many visitors? 4 air conditioned bedrooms with en-suites and balconies. Reasonable rates.

Contact Peter & Leanne
4997 7201 0407 974 420

woottonguesthouse@gmail.com

* REAL ESTATE

EDE'S REAL ESTATE PTY LTD SINCE 1956

For all your Real Estate needs in Wootton, Bulahdelah and surrounding areas. Agent/Agency Award Winners 2018 to 2024. Remember choosing Ede's is choosing success.

Local Agent 4997 4566 0408 492 883
edes@edes.com.au www.edes.com.au

DEBRA THOMSON PROPERTY

Sales Agent in the Bulahdelah, Wootton, Nerong, Hawks Nest, Tea Gardens and Karuah areas. Debra Thomson, Sales Agent P: 0450 528 440 E: debra@debrathomsonproperty.com

* PLUMBER

TIM MCDONNELL LIC NO. 14660
Plumbing, Draining, Roofing Guttering
Water tanks, Gas fitting
Wootton & all areas – 0418 682 199

* TRANSPORT

RPS ENTERPRISES - "BULAHDELAH BUSES"

You require the transport we do the driving. Luxury Air conditioned seat belted buses available for wedding guest transport, winerytrips, concerts, sporting events. Call Paul and Renee Spiteri to discuss your transport needs. 4997 7149 or 0407 298 954

* FARM SERVICES

C & E MOBILE MECHANICAL

Log book & general service, brakes, steering, suspension, electrical repairs, welding, breakdown assist. MVRL58530. Craig Huggett—0410 655 920

* GENERAL

ALTERNATIVE TREE CARE

Courteous, professional team for all aspects of tree pruning and removal. Stump grinding and leaf mulch sales. Fully insured, obligation-free quotes.
Call Ryan Parker 0431 042 221

BULAHDELAH POST OFFICE MON-FRI 9AM-5PM.

Bank@Post personal and business banking, passports, gift cards, phones, lotto and instant scratchies. 4997 4283

WOOTTON WATER CARRIERS

Tanks, pools or dams. HNEP Health approved. Peace of mind, as well as water. 0488 223 575. Fbook: Wootton WATER Carriers

BD APPLIANCE REPAIRS

Specialising in washing machines, dryers, & dishwasher repairs & installs. We come to you. Call your local repair man, Dave - 0422 787 552

JO LYONS PHOTOGRAPHY

Professional Photographer for People Whose Kids Have Four Legs. Dog and Family photography. Purpose built studio in Wootton offering the ultimate studio/outdoor experience.
0412 617 928

www.jolyonsphotography.com

* LIFESTYLE, HEALTH & BEAUTY

LIARNE'S HAIR AND BEAUTY

A private home salon. All ladies and mens hairdressing. Waxing, relaxation facials, lash and brow tinting. Air conditioning, eftpos facilities. Tuesday to Friday 9am to 5pm 0412 833 700

YOGA CLASSES WITH NAOMI PATTON

Wootton Hall. Mondays 9-10am we unwind with a gentle yin/restorative class, suitable for everyone, even those nursing injuries. Wednesdays from 9.15-10.45am it's an active Hatha class where we get moving. All welcome. 0414 387 008

NEW ADVERTISERS WELCOME Contact Leanne @
treasurer@wootton.org.au