

## DIRECTORY

### Air Conditioning

Repairs, sales, installation. Domestic and commercial. Mark Tidbury Lic no 123069C

0427500329 49977308

### Backhoe Hire

49977154 0418 623318

### Café

Brush Turkey Café

'Food Without Fumes' Wootton 49977296

T.J's Diner 'Best burgers on the coast'

Bulahdelah 49974427

### Cleaning

5 Star home grooming Quality and attention to detail assured. Phone Jenni B.H. 49977330

### Electrical Contractor

STS Services P/L Lic 27928C

Garry Williams 49977167 0417369670

**Excavations** Dwelling sites prepared, road constructions, property drainage and dams, light clearing, tipper and grader hire, sand and gravel supplies.

Pete 49977327 0427740990

### Horses GEMBRAS DOCS ONYX

DUAL SIRE REGISTERED STALLION

AQHA-A17174 ASH-SM133207

Standing at stud: progeny usually for sale.

Gembira Horses 49977335 0419201913

### Ice Cream Cakes

For that special occasion!

Roscoes 49977351

### Massage

**Healing Hands Therapy** Energetic Healing. Relief of physical and emotional pain

David Flakelar 0418407750 49977320

Therapeutic and remedial massage, qualified and registered ATMS - relieve your pain/stress

Kerry Bromage 0422977977 49977320

**Bowen Technique** for relaxation and relief of stress and all types of pain. Enrol now to learn Bowen and help family and friends 49977339

### Motor Repairs (small) & Equipment Hire

Lawn mowers and chainsaws etc. Mower hire all sizes and Trench digger

Geoff Williams 49977404 041848209

### Mobile Mechanic (Licence no 38287) Repairs of

tractors, earth moving equip, irrigation pumps, diesel & hydraulics. Machining & welding John Spaliviero

49977154 0418 623318

### Organic Small Goods Supplier

Pastas, dry goods etc Paul Shipton 49977256

### Paving

Down to Earth Paving - Patios, paths, driveways, brick edging Lic no 37348C

Walter Hacene 49977344

### Plumber & Metal Roofing Specialist

John Hessing 49977427

### Real Estate

Rural Valley Realty - Your local real estate agent servicing Bulahdelah to Nahiab

Steve Devries 49977214

Edes Real Estate Pty Ltd - Stock & Station Agent & Property Management Brian Ede www.edes.com.au

49974566 49977180(A/H) 0408492883

### Sculpting Wood

Old stumps and trees into garden sculptures, fence posts into works of art. Garden seats, tables etc.

John Startin 65591553

**Signs** Hand painted signs and vinyl lettering, shop-fronts, vehicles, boats, windows, light boxes, 3D models, promotional displays Bruce Peachey 0438235057

### Trencher & Mobile Crane/Borer Hire

MRM Specializing in trenching for underground services & power pole replacement

Mick 0408669105

### Water

Sam the Waterman Local water delivery

49974710 0408652110

**Winery** Great Lakes Wines 115 Herivels Rd Wootton Semillon, Semillon Chardonnay, Mellow White, Shiraz, Tawny Port. Ph Steve & Robyn 49977255

# WOOTTON VALLEY NEWS

## OCTOBER 2004 NO 32

DISTRIBUTION 350 WOOTTON COOLONGOOK

BUNGWAHL BUNYAH BULAHDELAH

### Broad-Leaved Paperbark *Melaleuca quinquenervia*

Probably the most familiar of the "paperbarks" in Eastern Australia, it is a common species found along coastal streams and swamps and is widely cultivated. It is a small to medium-sized tree reaching 25metres. The bark develops a multi layered papery habit. The flowers, which can be seen around Wootton now, appear in short bottlebrush spikes, creamy-white in colour and 50mm long. It's nectar is a great attractant for birds.

NB This plant has caused serious environmental damage in the Florida Everglades, USA, where it has spread uncontrollably. A native in one area can become a weed in another.



## COMMUNITY CALENDAR

Thursday 28th October  
Saturday 30th October  
Sunday 31st October  
Saturday 6th November  
Saturday 6th November  
Sunday 7th November  
Monday 8th November  
Saturday 13th November  
Sunday 14th November  
Monday 15th November  
Thursday 25th November  
Saturday 27th November  
Saturday 4th December

Wootton Fire Brigade Meeting 6pm  
Wootton Monthly Dinner 7pm Al Fresco  
Coolongook School Photo Fundraiser  
Grand Opening WOOTTON RESOURCE CENTRE 11AM  
Bulahdelah Music Festival  
Late Spring Fair Coolongook School  
Coolongook Sports & Tennis Meeting 7pm  
Father John's Centenary  
Music Day Great Lakes Winery  
Wootton/Coolongook Progress Assoc Meeting 7pm  
Wootton Fire Brigade Meeting 6pm  
Wootton Monthly Dinner 7pm Pasta Night  
Coolongook Country Fair

PUBLISHED BY WOOTTON COMMUNITY NETWORK  
EDITORS BRONWYN LITTLE 49977185 AND PAT TATE 49977292  
EMAIL ADDRESS: [riberry@tsn.cc](mailto:riberry@tsn.cc) and [PatriciaTate@tsn](mailto:PatriciaTate@tsn)

## Wootton Community Network News

### GRAND OPENING 'BRUSH TURKEY CAFÉ'

The whole community is invited to the much awaited Grand Opening of the **Wootton Community Resource Centre** on **Saturday, 6th November at 11am**. The mayor, John Chadban, will officially open the centre followed by drinks, finger foods and entertainment by Peter Kershaw on harp and Nicky and Mick Legge and Penny Kealy from Rhumb Line. Please come and help celebrate this amazing community achievement which demonstrates what can be achieved with a positive community spirit.

**Wootton Way Signs:** Construction of the long awaited signs on the Northern and Southern approaches to Wootton Way should be erected soon.

'Barrier Signs' are in the process of their construction which will display tourist attractions along the Wootton Way. Thanks to the support of National Parks, State Forests, Forest Lodge, Wootton Guest House, Great Lakes Winery, Great Lakes Council, Great Lakes Tourism and the Wootton Community Network, this project will attract visitors and tourists to our beautiful valley and help local businesses and improve services to the area.

**First Aid and Food Handlers Courses:** Due to lack of numbers we are unable to run these courses at this time. For anyone interested in completing the Food Handlers Course and wishes to volunteer in the Brush Turkey Café we can arrange for you to join another course at a different location.

Thanks to Alison Higgs for making our mailbox into a "work of art". Ask Alison about painting *your* mailbox! It could become a trend.

**Monthly Dinners** Dinners in the "Brush Turkey Café" are as popular as ever and will now be held on the **LAST SATURDAY** of every month, in response to requests to trial Saturday night dinners, replacing our usual Friday. The night includes live music by local musicians and a 3-course meal for \$15. Book on 49977296 as numbers are always limited.

The next dinner is on **Saturday October 30th at 7pm** and will be 'al fresco' barbecue style. Nibbles on arrival will be followed by marinated fish and chicken, lavish salads, crusty bread and a delicious dessert, tea and coffee. BYOG.

The **November** dinner will be held on **Saturday, 27th November** and will be a pasta night with a variety of sauces using fresh organic produce from our garden.

## Grand Opening Wootton Community Resource Centre

Saturday 6th November 2004

11am

All community members are invited!!!



### Wootton CTC (Community Technology Centre)

Thanks to Chris Tidbury for her part in helping set up the Wootton CTC. She is available for general help but it is advisable to book with her first. Call 49977296 to book. The CTC is available when the Brush Turkey Café is open Friday to Sunday. Services available include internet access, printing, scanning, copying (small numbers only), faxing, computer games and general computer use. Thanks also to Wayne Cooper for his technical help. Anyone wishing to offer their help leave your details at the Centre.

### Quality Home-made, Home-grown, Art/Craft, Local goods wanted!!

The Centre is available to display and sell your wares. Drop in and talk with us to arrange.

**Coffee Rewards Card System** Many locals are taking advantage of this offer and are enjoying every 6th cup free. Remember to have your card marked each time.

**Library** A small library has been established at the Resource Centre from a collection of donated books. Various titles from Jeffrey Archer to Irving Wallace and a collection of periodical magazines eg: Grass Roots and Owner Builder, can be borrowed. Feel free to come and browse when the café is open. Other reading material always available include the Advocate, Sunday papers, current magazines, Wootton History, Wootton Historical Railway Walk photographs, tourist information and maps.

**Remember!** The Wootton Resource Centre was built for the community by the community. Please use and support it. Any ideas that will encourage social interaction and community participation are welcome. The Centre is available for other uses. Eg: card night, teens night, music jam, community interest groups, workshops etc. Ring 49977296 to discuss details.

## **Ben the Barista, The blue tongue lizard and Rock Pearl Chef**

**"A day at the Brush Turkey Café" by Pat Tate**

**Morning** On arrival at the Brush Turkey Café I was greeted by two early travellers wanting a 'cup of coffee'. Whilst waiting the 20 minutes for the Espresso Machine to heat up I learnt that 'Ben' was a barista. A barista is a specialist in the art of coffee making. Feeling completely intimidated by this knowledge I asked him to make his own coffee. He then proceeded to give me and Letitia, who had arrived by this stage, a lesson in the finer points of coffee making - the correct grind, temperature, froth, freshness, timing, tamping, quantity and cleanliness. We made lattes, cappuccinos and flat whites, spun the milk, compared stale and fresh coffee, different colours of crema and felt different grain sizes. Nearly two hours later our minds were bursting with coffee info and our skills greatly improved, to my amazement when I later tested myself. Ben, and his yoga instructor friend Kate, finally left sated with pecan pie and orange, almond cake and lattes (Ben made these), with the promise to return and teach all the volunteers these secrets of coffee making. In Ben's words "It's not rocket science, you just need a clean machine and freshly, correctly ground coffee." By the way, he was impressed with the cleanliness of our machine.

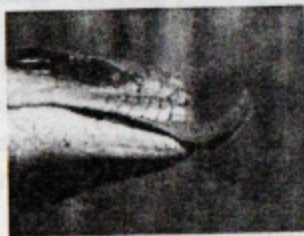
**Mid Day** Later we had another visitor. Letitia's keen eyesight caught an adult blue tongue lizard scampering in the door and scaring the living daylight out of Adrienne and Walter Hacene, who were waiting to order. Brave Walter carefully caught our native visitor and released it back into the wild not before Adrienne expertly relieved it of a couple of ticks. They could then relax and enjoy their meal. Another satisfied customer.

**Afternoon** Meanwhile others were enjoying such tasteful delights as Mediterranean Vegetable Lasagne, Indonesian Chicken Salad and Foccacia. Then in walked the chef of the famed Rock Pearl Restaurant in Forster, Marcus and his mother Helga. They ordered Lemon Myrtle Cheesecake and Orange Almond Cake (wishing they could fit in Carrot Cake as well) and coffees. Marcus was suitably impressed and Helga commented that Marcus could learn how to cook from us (joking of course but still a compliment).

What a day in the Brush Turkey Café! So, if you want the best coffee on the coast, between Sydney and Byron Bay, or you want to experience native wildlife first hand or eat great food 'the chefs of other restaurants rave about', visit our beautifully hand built café in our wonderful little village of Wootton. You'll be greeted by really friendly staff (all volunteers) and while you're there check out the tables - all painted by local artists featuring native plants, animals and even a nude!

By the way, the day before we had a regular customer write a poem for us:

"Come to the Brush Turkey Café  
For bush style hospitality,  
On the Old Highway before the  
Great Lakes Winery,  
Meet great people at  
Wootton's top eatery."



## **Indian Mynah Alert**

The Indian Mynah is no minor problem. They destroy biodiversity by driving animals out of hollows like parrots, sugar gliders, animals that need hollows to survive. This invasive bird has entered our beautiful area. It's referred to as the 'Flying Rat' and has become more of a menace than the insects it was introduced to control. Unlike the rather futile war that's been waged against the cane toad, scientists believe it's one battle they can win. The mynah was brought to Melbourne from India in 1862 to control insects in market gardens. They were later taken to Sydney and from there to North Queensland to combat cane beetles. Now, just like the cane toad, which was introduced to destroy cane beetles, the myna is a major pest. It is a very territorial bird that kills and drives out smaller less aggressive birds. Our bird population is in danger of being taken over. Look out for this invader and take all steps to deter this unwanted pest in our area before it is too late.



**Improve your wellbeing! Yoga may well be your answer.** Yoga classes are held every Wednesday 6pm to 7.30pm at the Wootton Hall by our experienced Yoga Teacher, Peter Auriac. Yoga is for all ability levels. Classes include gentle stretching exercises, balance, strength and flexibility improvement, increased concentration skills and relaxation methods. These classes are not strenuous and are highly beneficial to all ages. Wear loose clothing, bring a mat, \$5 and join a friendly group. Yoga is best done on an empty stomach. First night trial is free. Contact Peter Auriac on 49977201 for more information.

**Great Lakes Wines' Offer for Wootton Valley News readers**  
**Buy 1 case of wine, get 1 bottle of port free. Offer ends 12/10**

*Father John's is 100 years old and still going strong*  
*Come along on Saturday 13th November for the centenary celebrations at Father John's Coffee Shoppe at Coolongolook. Locals and past locals are invited to attend, so bring along old photos and stories to tell of Coolongolook in the good old days. Make it a reunion to remember. With every tea/coffee purchased you will receive a piece of complementary Centenary cake.*  
*For more info contact Father John's on 49977107*

### Wootton Rural Fire Services

Under extreme weather conditions a total fire ban can be announced without notice. Be aware that all Fire Permits would become null and void. To check, ring Fire Control on 65555782, or watch the media. Future meeting dates are Thursday, 28th October and 25th November at 6pm. Inspection Day for permits is Wednesday. Phone Robyn on 49977209 or 0413386803

### Coolongolook/Wootton Progress Association

Next meeting Monday 15th Nov 7pm Coolongolook Hall

### Coolongolook Sports & Tennis Club

Construction of the tennis courts: The next stage is the final finishing surface. Next meeting is Monday 8th November at 7pm

**Wootton Tennis Championships** were run the weekend of 2nd & 3rd October, but couldn't be completed because the tennis court lights blew. Council advise that they will be rectifying the situation soon. Thanks also to council for coming to our aid with regard to the renewal of the much needed fencing to the tune of \$2,500. The Spring competition is running now and is a very close competition. Any one of the 4 teams could easily be the champion team.

**Kennedy's Gap Road Floods Again** Local resident Margaret Lear has informed us that her road is flooded again after the two days rain we have had recently. She has had a three year battle with RTA to fix the problem of drainage from the highway which still persists. If this affects you contact Margaret on 49977192

### Family photographs GREAT CHRISTMAS GIFT IDEA

\$15-10cm x 13cm framed print (additional packages available)

Coolongolook School is holding a family photograph fundraiser on

**Sunday 31st October 2004 at the Coolongolook school.**

Photographs taken by local photographer Leanne Watt Book on 65518879 before 27/10

More information ring Ellen Auriac 49977511 or school 49977183

**Congratulations to...Scott Gordon and Belinda Buchanan on their recent wedding on 16th October. We wish them well in their future life together.**

**Welcome to...Tony Podmore and Robert Daniel of Squires Rd**

### Local Wootton Way Attractions For both locals and tourists

- The Grandis - The tallest tree in NSW
- Forest Lodge Horse Riding Ranch - Horse riding and accommodation
- O'Sullivan's Flora Reserve - Picnic area and bush walk
- Brush Turkey Café - Open Friday to Sunday 10-4 Light meals & good coffee
- Wootton Resource Centre - Computer access, Room for hire, community built
- Wootton Tennis Courts - available for hire
- Wootton Community Hall - available for hire for weddings, parties, anything
- Wootton Historical Railway Walk - Turn at Squires Rd, easy, interesting walk
- Great Lakes Winery - Herivals Rd, Open 7 days 10-5, monthly music days.

### Spring planting guide

#### October / November

Globe artichoke	Malons
Beans	Okra
Beetroot	Spring onions
Cabbage	Parsnips
Carrots	Pumpkins
Capsicum	Radish
Celery	Salsify
Choko	Silver beet
Cucumber	Squash
Eggplant	Sweet corn
Endive	Tomato
Kala	
Leeks	
Lettuce	

### Practical Growing News

Soap has been used for centuries as an all-purpose pesticide. It disrupts insects cell membranes and kills pests by dehydration. The key is not to use too much soap, or you'll also kill the vegetation near the pests. If you follow the proportions of soap to water in the basis spray recipe the vegetation should be fine.

### Basic Soap Spray

1-2 tablespoons liquid soap  
4 litres water

Combine ingredients in a bucket mix and then transfer to a spray bottle as needed. This spray recipe will work on a wide variety of garden pests. It is fast and easy to make, economical, non-toxic to the environment and to our own bodies- and it works. Even with organic non-toxic sprays, be mindful that beneficial insects as well as pests can also be effected.

### The Organic grower 2004

- Spring is the best time to take tip or leaf cuttings
- Good companion planting combinations

Beans and corn

Potatoes with horseradish or beans

Calendula with peas or broad beans

Brassicas with celery, sage or rosemary

- Practise crop rotation to limit pests and maximise nutrients. Root vegetables after leafy vegetables to utilise phosphorus. Leafy vegetables after legumes to utilise nitrogen