

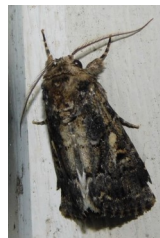
# WOOTTON VALLEY NEWS

OCTOBER/NOVEMBER 2019 NO 122

DISTRIBUTION WOOTTON COOLONGOLOOK  
BUNGWAHL BUNYAH BULAHDELAH

## Bogong moths (*Agrotis infusa*)

Bogong Moths belong to the Family Noctuidae and are well known in south-eastern Australia for their mass migration in spring, to high mountains where they become important food for other animals. They are often distracted on their journey by lights in houses and roads and become lost. Bogong moth caterpillars are known as cutworms, eating corn, tomatoes and other crops. Like other insects, their numbers appear to be decreasing and scientists are asking the public to report sightings using the Moth Tracker website [www.swifft.net.au/mothtracker/](http://www.swifft.net.au/mothtracker/) Photo © Fred



## COMMUNITY CALENDAR

*Coming to a dinner ? Please let us know by RSVP to [brushturkey@live.com.au](mailto:brushturkey@live.com.au)  
If you've booked & can't make it please let us know so we can use the waiting list.*

Sun 6 Oct	<ul style="list-style-type: none"> <li>• Brush Turkey Café: Great Lakes Food Trail <i>times TBA</i></li> </ul>
Sat 12 Oct	<ul style="list-style-type: none"> <li>• Brush Turkey Café: Kids' entertainment 3.30pm, \$2 popcorn, *RSVP</li> <li>• Wootton Hall: Food Swap 5pm</li> <li>• Brush Turkey Café: Supper night 6pm, \$10pp *RSVP</li> </ul>
Sun 13 Oct	<ul style="list-style-type: none"> <li>• Wootton Fire Brigade Shed: training, Squires Rd 8am</li> </ul>
Sat 19 Oct	<ul style="list-style-type: none"> <li>• Wootton Hall: "Meet the new Committee" 1pm</li> </ul>
Sat 26 Oct	<ul style="list-style-type: none"> <li>• Brush Turkey Café: Community dinner 7pm, \$20pp *RSVP</li> </ul>
Sat 9 Nov	<ul style="list-style-type: none"> <li>• Wootton Guest House: Wootton Cup 3pm, donation</li> <li>• Wootton Guest House: Food Swap 5pm</li> <li>• Brush Turkey Café: Supper night 6pm, \$10pp *RSVP</li> </ul>
Sun 10 Nov	<ul style="list-style-type: none"> <li>• Wootton Fire Brigade Shed: training, Squires Rd 8am</li> </ul>
Sat 16 Nov	<ul style="list-style-type: none"> <li>• Wootton Hall: Wootton Welcome BBQ, 12noon-3pm, free, *RSVP</li> </ul>
Sat 30 Nov	<ul style="list-style-type: none"> <li>• Brush Turkey Café: Community dinner 7pm, \$20pp *RSVP</li> </ul>

The Wootton Valley News is usually delivered before the 1st day of each *second* month.

\* - details in the newsletter and online [www.wootton.org.au](http://www.wootton.org.au)

Published by Wootton Community Network Inc Editors: Fred Fetherston Sylvie Riviere

Contact us by email [brushturkey@live.com.au](mailto:brushturkey@live.com.au)

Visit our website [wootton.org.au](http://wootton.org.au) and "Wootton Community" facebook public group

## Wootton Community Network News

The WCN AGM took place on the 14th September and the following were elected:

**Bill** Buckland President, **Fran** O'Connor Vice President, **Kate** Hosey Secretary, **Leanne** Wright Treasurer, **Franz** Flintrop, **Mary** Lee, **Patrick** Riviere committee members. The new committee has some early work to meet and get in place all the necessary matters for the ongoing work of the WCN. Minutes of these early meetings will be issued to the WCN Community. After that initial work there will be an open **"Meet the Committee" meeting on Saturday 19 October**, where ideas and suggestions for the betterment of the WCN will be solicited and discussed. **In the meantime ideas, comments, suggestions, to the WCN should be sent to [brushturkey@live.com.au](mailto:brushturkey@live.com.au).**

Highlights from outgoing Presidents Report *"we have continued to provide the community the opportunity to socialise, be involved and contribute...achieved a record-breaking profit this year since taking on the role of Crown Lands Manager...continued to hold Supper nights, Community Dinners and Meet the Artist evenings...and...catering activities...including this year's very delicious Long Table Dinner...which would not be able to happen without the continued support and enthusiasm of our volunteers. The additional hiring of facilities...has had a positive outcome in increasing both the usage of facilities and income for the WCN...also had an increase in the younger members attending functions and many new members joining in the activities... The strategic plan has now been updated revoking sections...which the committee deemed outside the scope of the WCN. The revised plan is due to be noted at the September Council meeting. I thank the committee for its hard work and continual effort in managing the facilities that we all use and enjoy."* Megan G (full AGM reports are being emailed to WCN members)

Long Table Dinner - Hosted at the Old School House Wootton NSW



CHRISTMAS in WINTER dinner in the Brush Turkey Café

Hearty Country Food Community Dinner 31st August 2019



## Father's Day raffle winners were

Geoff Freeman, Sandra Towers, Coral Weavers.

Thank you to all helpers who helped me in the Café on Fathers Day it was greatly appreciated. *Leanne*

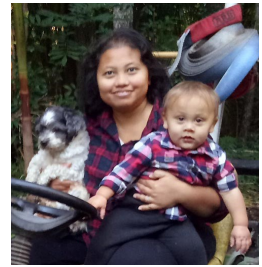


## Artist on Display

in the Brush Turkey Café is Kym Kilpatrick *"I most want to convey the individual personalities and emotions of the animals and people I paint"*

### New Aussie Goddess in Wootton

Dewi SARI made her Pledge of Allegiance to Australia on September 17 in her final step to becoming an Australian Citizen. Dewi (means goddess) arrived in Australia, from Indonesia on August 12, 2011 to join her husband, Peter, who was working on Christmas Island at the time. Dewi is already part of Wootton; please also welcome her to the Australian family when you next see her. Text/photo ©Peter D



### Celebrating 20 years of the Bypass

Completion of the Bulahdelah-Coolongolook Freeway was celebrated by a **community day on 24 October 1999** and it was opened to traffic a few days later. The old Pacific Highway through Wootton is now a local road and remained the

“Old Pacific Highway” until late in October 2005 when it was renamed “Wootton Way”.

### William “Bill” Buckland New WCN President

*"I am a retired engineer, who over the long years of construction industry work always dreamt of a place in the country. That place turned out to be Wootton in 2015. Prior to retirement I was Project Manager managing design consultants on many major projects: the Sydney Olympic Stadium, the successful bid for the Wembley Stadium-London, the Brisbane Suncorp Stadium and the Melbourne desalination plant. I always enjoyed the role of creating a cohesive and creative team who could balance conflicting demands.*

*In 1968 I went to the US to do Graduate studies at Stanford University in seismic and environmental engineering. After many years in the San Francisco Bay Area I returned to Australia in 1988 where I Design Managed major projects. The Wembley bid involved two years of travel back and forward to the UK.*

*My sister's family for many years had country properties near Sutton Forest and later near Scone. Visits to these properties gave me a love of country life and introduced me to riding. A skill which I developed and completed in hunter/jumper competitions in the US. I have a wonderful partner Robyn, three grown children who live and work in Sydney with their partners, two delightful grandchildren who love to visit Poppie's farm. My four-year-old granddaughter tells me she doesn't like leeches (she hasn't had one yet) but loves the hot tub.*

*I look forward to making a contribution to the whole Wootton community."* Bill



We are always looking for **new artists to display their work in the café**. It can be drawings, prints, photographs. They must be mounted and ready to hang. Contact Pam if you are interested [pamdunne@rhalex.com.au](mailto:pamdunne@rhalex.com.au)

Email [brushturkey@live.com.au](mailto:brushturkey@live.com.au) by 15th November

**Lids 4 Kids in Wootton** [envision.org.au/envision-hands/](http://envision.org.au/envision-hands/)

"A friend of mine Tim Miller questioned why all lids went to land fill and founded **envision** who recycle lids and turn them into prosthetic hands for kids. He has started a facebook group called **lids 4 kids** which now has gone viral with over

5000 collection stations set up over Australia. I have registered with them and started a collection station at Wootton Community Hall on top of the library box. If you would like to recycle lids for this great cause read what is accepted, wash your lids and place them in the box."

Walter H



**What Lids can we use ?**



- |   |   |
|--|--|
| <ul style="list-style-type: none"><li>• DIRTY</li><li>• Pop-Up Lids</li><li>• Vegemite Lids</li><li>• Coffee Pods</li><li>• Wine Bottle lids</li><li>• Plastic Rings</li><li>• Plastic Inserts</li></ul> | <ul style="list-style-type: none"><li>• RINSED</li><li>• Number 2 or 4</li><li>• Milk Bottle lids</li><li>• Soft Drink Lids</li><li>• Water Bottle Lids</li><li>• Bread Clips</li><li>• Gold Coins 😊</li></ul> |

**Saturday 9 November, 3pm 1 Worth St Wootton**

**"Wootton Cup" ALL WELCOME**

One of our regular craft groups are holding another fun filled event, with all donations going to our local **Wootton Rural Fire Brigade**. So please come along, support & enjoy at the Wootton Guest House. A gold coin allows you to race a horse. Our local bookie will be taking bets & your money. There are prizes to be won, so wear your best clothes, hats, even a Jockey outfit. Soft drink, Champagne & nibbles are available. *No physical exertion is required. Be prepared for a laugh.* Information or enquiries **Leanne** or **Peter** 0407 974 420



**Sat 16 November 12 noon to 3pm "WOOTTON WELCOME BARBECUE"**

Wootton residents, old and new - come along for a friendly barbecue, meet your neighbours and land management advisors. Share your goals and challenges managing your property and find out what help is available.

**Saturday 16 November 2019 - 12 noon to 3 pm - Wootton Community Hall**

Free event, barbecue provided RSVP by Friday 1 November 2019 to:

email [louise.duff@midcoast.nsw.gov.au](mailto:louise.duff@midcoast.nsw.gov.au) Mobile: 0436 924 577

This event is being co-ordinated by **Wootton-Topi Topi Sustainable Farming Group** with **MidCoast Council**, **Karuah-Great Lakes Landcare** and **Hunter Local Land Services**.



**Friday 18 October, Wootton, 9.30am-1pm Native Plants Field Day**

Peter Dixon will host a hands-on look at local native plants and their properties and uses, plus some interesting exotic fruit trees. Every participant is invited to dig up and take home some of the abundant *Lomandra longifolia* from an area being converted to pasture. Also available for participants to transplant are some rainforest tree seedlings. Morning tea and a BBQ lunch will be provided, please RSVP to [joel.dunn@glcr.org.au](mailto:joel.dunn@glcr.org.au)



## WOOTTON RURAL FIRE BRIGADE

The Fire Danger Season started in August and September 2019 had more incidents than the previous 3 Septembers combined, mostly started by people. RFS members will be visiting as many properties as we can to check static water sources, discuss fire plans, inspect truck access, street numbers, etc.


**Extreme Fire days and even evacuations** could occur this year, so keep an eye on social media, papers and radio announcements.

*Special thanks go to the "Manning Cruzers" auto club for*

*supporting Wootton in their raffle this year!* **Adam Garnett Captain 0428 272 629**



**Sat 12 October starting at 3.30pm** The young people in your life are invited to an afternoon of school holiday entertainment in the Brush Turkey café. We'll provide the popcorn and slushies. You need to provide adult supervision and \$2 to cover the cost of the popcorn. We'll wrap up in time for everyone to join the *Food Swap* at 5pm. Please RSVP to Peter on 0478 741 111 with the age of anyone wanting to attend so we can target the entertainment appropriately.



## Bulahdelah Police Report Senior Constable Trevor McLeod

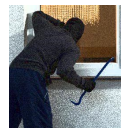
Police often receive reports of **illegal dumping** of rubbish in the rural/forest areas. If you see somebody doing the wrong thing report it please. Illegal dumping in these areas carries a fine of up to \$10,000 for individuals and much heavier for corporations.



With the drought going on remember to **care for those animals** in a proper manner. Not providing adequate feed and water is not only illegal it is also cruel and inhumane.

Leaving gates open and allowing stock to roam and/or graze on roadways has serious consequences.

Between late June 2019 and 16th August 2019, unknown person/s have entered a small cabin used as a holiday house in the Topi Topi area and **damaged** numerous household items and furniture as well as **stealing**.



Don't advertise when you're away—social media posts can tell too much.

## Local job opportunities in Landcare in Manning / Great Lakes

Funding for the next 4 years from the NSW Government will enable Landcare to employ two local part time coordinators in rewarding opportunities working in collaboration with local landcare networks, agencies and other organisations in the state-wide NSW Landcare Program. Please direct phone enquiries to:-

Robyn Lamond 0419 800 896 Daintry Gerrand 0427 565 099

**Brush Turkey Café - *Supper and Entertainment* events, 12 October and 9 November**  
*Peter D and Megan K* are organising these two evenings. If you are coming, RSVP to help us organise the menu. Please sms *Megan K* on 0418 420 608



### **Saturday 12 October, 2019 Beekeepers' Field Day, Tocal**

If you missed the Wootton Beekeeping workshop, this is your chance to travel to the 40th annual Tocal Beekeepers' Field Day near Paterson. Filled with numerous activities, presentations by subject matter experts, a trade show, demonstrations, honey tastings and food vendors available all day. **FREE EVENT**

[www.tocal.nsw.edu.au/data/assets/pdf\\_file/0003/822306/beekeeper-field-day.pdf](http://www.tocal.nsw.edu.au/data/assets/pdf_file/0003/822306/beekeeper-field-day.pdf)



[www.farmtofridge.com.au](http://www.farmtofridge.com.au)

Farm to Fridge mid-coast producers are passionate about fresh, local, ethical and sustainable produce. We email every Sunday afternoon, you place your orders before 4pm on Tuesday, your order will be ready on Friday from 3pm.



### **Motion Sensor Cameras for Landcare Members**

KGLL has a handful of motion sensor cameras, if you'd like to borrow a camera or become a member, please contact

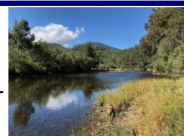
Joël [joel.dunn@glcr.org.au](mailto:joel.dunn@glcr.org.au)



### **Healthy Waterways Free Events**

Connecting kids to our local waterways and instilling a love for where they live is the focus of MidCoast Council's Waterway and Catchment Report Card release this year. During October, Council is hosting a number of **free hands-on community activities**. All are invited to join one or more "Explore with an Expert" events along the coastline, lakes and rivers

[www.midcoast.nsw.gov.au/reportcard](http://www.midcoast.nsw.gov.au/reportcard)



### **Summer's coming—let's stay safe at work and play.**



Out on the water, kayaking, fishing and sailing—wear a lifejacket

[www.rms.nsw.gov.au/maritime/safety-rules/safety-equipment/lifejackets.html](http://www.rms.nsw.gov.au/maritime/safety-rules/safety-equipment/lifejackets.html)

Be safe flying your Drone, news laws apply from December 2018

[www.gizmodo.com.au/2018/07/10-laws-for-flying-drones-in-australia/](http://www.gizmodo.com.au/2018/07/10-laws-for-flying-drones-in-australia/)



Avoid chimney fires next Autumn – clean your flue .....this Spring !!

[homeguides.sfgate.com/clean-metal-chimney-30705.html](http://homeguides.sfgate.com/clean-metal-chimney-30705.html)



2019

the **ARCHIBULL** PRIZE

## Competition for Students Across Australia

<http://archibullprize.com.au/careers/index.html>

The 2019 ArchiBull competition invites students to use or develop a LEGO character for a career in agriculture. Go into the draw to win from over \$2,000 in prizes. Entries close 5pm Monday 11th November 2019. Winners Announced **National Agriculture Day, 19 November 2019.**



Great Lakes Food Trail – Sunday 6 October

[www.thegreatlakesfoodtrailnsw.com.au](http://www.thegreatlakesfoodtrailnsw.com.au)

## Discover our region's Finest producers

**6TH OCT 2019**  
**SAVE THE DATE**  
**SPRING TRAIL!**

[www.thegreatlakesfoodtrailnsw.com.au](http://www.thegreatlakesfoodtrailnsw.com.au)



### Watch emails and facebook for updates about...

- ◇ **Working Bee** at the Community Centre
- ◇ **Themes** for Community dinner nights
- ◇ **10c container recycling**

**WCN membership** \$12.50 pp.

BSB: 633 108 Acct: 162518591

Reference: "WCN19" + your name

Please email the Treasurer

[brushturkey@live.com.au](mailto:brushturkey@live.com.au)

**Wootton Directory** contains important local contacts. **Always dial 000 for Emergency.**  
Please email [brushturkey@live.com.au](mailto:brushturkey@live.com.au) with other contacts to include here. Thanks.



### Wootton Community Network

President: Bill Buckland

Secretary: Kate Hosey 0402 776 376

Treasurer: Leanne Wright 4997 7201

Email: [brushturkey@live.com.au](mailto:brushturkey@live.com.au)

### Bookings—all facilities

*Celebrating something special? Running a Course or a Market?*

*Getting people together?*

Susanne Kennedy 0402 742 226

### Wootton - Topi Topi Sustainable Farming Group

Chair: Carole Robinson 0428 009 952

### Wootton Rural Fire Brigade

Captain: Adam Garnett 0428272629

Sen Dep Capt: Bernard Carran 0409684177

Deputy Capt: Jim Garnett 0422916002

President: Adam Garnett 0428272629

### Midcoast Fire Control

Burnoff notifications 1300 643 262  
(24hour prior notice)

### Karuah Great Lakes Landcare

Joël.Dunn@glcr.org.au 0401932533

**MidCoast Council:** 6591 7222

**State Forests** Wauchope 6585 3744

**Police:** Sector Supervisor,  
12 Meade St Bulahdelah  
Senior Constable Trevor McLeod,  
4997 4204, 0438 140 370  
[mcle1tre@police.nsw.gov.au](mailto:mcle1tre@police.nsw.gov.au)

**State Emergency Service** 13 2500

### Local Land Services

Wild dogs Laurie Mullen 0407 785 007

Rural Resilience Group

Peter Brown 0437 671 459

### National Parks & Wildlife

6591 0300

**Fawna Wildlife Rescue** 6581 4141

**Bulahdelah Waste Facility**  
**opening hours**

**Tuesdays 1- 5pm, Fridays 12- 4pm**

**Sundays 10-2pm**

# DIRECTORY

## Accommodation

### **Wootton Guest House**

Too many visitors? 4 air conditioned bedrooms with en-suites and balconies. Reasonable rates. Contact Peter & Leanne  
[www.woottonguesthouse.com.au](http://www.woottonguesthouse.com.au)  
4997 7201 0407 974 420

## Real Estate

### **Ede's Real Estate Pty Ltd**

For all your Real Estate needs in Wootton, Bulahdelah and surrounding Areas  
*Agent & Agency Award Winners 2018 & 2019*  
Your LOCAL AGENT 49974566 0408492883  
Remember Choosing Ede's is choosing success  
[edes@edes.com.au](mailto:edes@edes.com.au) [www.edes.com.au](http://www.edes.com.au)

## Wootton Transport

### **Neil Ede, Wootton Livestock Transport**

For any livestock handling needs. 30 years experience. 0407 787 920

### **RPS Enterprises - "Bulahdelah Buses"**

You require the transport we do the driving. Luxury Air conditioned seat belted buses available for wedding guest transport, winery trips, concerts, sporting events. Call Paul and Renee Spiteri to discuss your transport needs.  
4997 7149 or 0407 298 954

## Building - Plumbing

### **Tim McDonnell Lic no. 14660**

Plumbing, Drawing, Roofing Guttering  
Water tanks, Gas fitting  
Wootton & all areas – 0418 682 199

### **Binna Burra construction Lic no.299434C**

Custom building and carpentry, servicing Smiths Lake, Pacific Palms, Wootton, Nambucca, Forster and surrounds.

[www.Binnaburraconstruction.com.au](http://www.Binnaburraconstruction.com.au)

0421245197

## Pest Control

### **Bugs Or Us Pest Control**

General pest and termite control.  
Specialising in termite detection with our termite detection dog.  
Pre-purchase inspections – 0490 454 644

**Advertising for Wootton Valley News Directory**  
**\$50 per four lines, \$5 per extra line (6 issues)**

**Renewals from 1st July**

*These businesses support this newsletter.  
Please support them wherever possible.*

**New advertisers welcome, contact Leanne at  
[woottonguesthouse.com.au](http://woottonguesthouse.com.au)**

## Health and Beauty

### **Liarne's Hair and Beauty**

A private home salon.  
All ladies and men's hairdressing.  
Waxing, relaxation facials, lash and brow tinting. Air conditioning, eftpos facilities.  
Tuesday to Friday 9am to 5pm 0412 833 700

### **Dr Lynette Arnoldus-Lewis**

Psychologist–Nabiac, Approved DVA Provider–  
Domestic violence, Marriage counselling,  
Grief, Carers support, Family Issues .....  
65541535 0429 190 142  
[lynette.arnoldus@bigpond.com](mailto:lynette.arnoldus@bigpond.com)

## Bulahdelah Post Office

Bank@Post personal and business banking needs, passports, travel and computer needs, phones, gifts and more. Bendigo bank.  
Mon-Fri 9am-5pm 4997 4283

## Photography Services

### **Jo Lyons Photography**

Down-to-earth lifestyle pet photography by AIPP Accredited Professional Photographer. Outdoor-studio sessions available in Wootton and surrounds. I also offer pro-bono services to local animal rescue organisations.  
0412 617 928 [www.jolyonsphotography.com](http://www.jolyonsphotography.com)



Daylight Saving time 2019 in NSW will begin at **2am on Sunday 6 October** and ends at 2am on Sunday 5 April 2020.