

WOOTTON VALLEY NEWS

OCTOBER/NOVEMBER 2017 NO 110

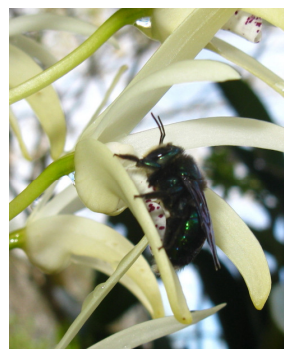
DISTRIBUTION WOOTTON COOLONGLOOK
BUNGWAHL BUNYAH BULAHDELAH

Native Carpenter bee (*xylocopa Lestis*) on a native orchid (*dendrobium speciosum*)

The magnificent metallic green carpenter bee (about 20 mm long) which lives inside the dry flower spikes of grass trees (*Xanthorrhoea*), is now only known in coastal Queensland and NSW, and in Kangaroo Island, South Australia. The range of this dazzling bee is being steadily reduced



by massive loss of their nesting sites. Land clearing for farming, housing and vineyards has destroyed thousands of carpenter bee nest sites. The remaining grass trees are producing less flower spikes because there are less bush fires, and grass trees need fire to stimulate flowering. Maybe that is why it is seen here on Fred's Sydney rock orchid, one of the world's underrated and exciting orchids. They are capable of producing the largest display plants and most spectacular shows of mass blooming of any orchid. (Photos by Fred Fetherston)



COMMUNITY CALENDAR

Sun 1 Oct	• Great Lakes Food Trail, Brush Turkey Café, 10 am—3 pm
Sat 14 Oct	• Wootton Hall Grounds: Food Swap 5pm • Brush Turkey Café: <i>Light supper night</i> 6pm supper \$10 pp
Fri 20 Oct	• Brush Turkey Café: Meet the artist Anna Brown 6pm
Sun 22 Oct	• Wootton Hall: Advanced Care Planning: Peter Dunne: 3pm, gold coin donation
Sat 28 Oct	• Brush Turkey Café: Halloween dinner, 7pm, \$20
Sat 4 Nov	• Wootton Community Network Meeting, Brush Turkey Café, 3pm
Sat 11 Nov	• 'Wootton Cup' - Wootton Guest House, gold coin donation • Wootton Hall Grounds: Food Swap 5pm • Brush Turkey Café: <i>Light supper night</i> 6pm supper \$10 pp
Sun 12 Nov	• Wootton Fire Brigade Shed: <i>training</i> , Squires Rd, 9am
Sat 25 Nov	• Brush Turkey Café: Keep it Local dinner, 7pm, \$20
	CHECK FACEBOOK FOR LAST MINUTE EVENTS

Published by Wootton Community Network Inc

Editors: Caro Badcock 0408 415 420 email: caro_badcock@bigpond.com Sylvie Riviere 0408 861 051

Join our group on Facebook: Wootton Community or email brushturkey@live.com.au

Visit our website @ www.wootton.org.au

Wootton Community Network (WCN) and Community Hall Committee News

- **WCN AGM**— President Jim O'Connor, Vice President Fred Fetherston, Secretary Fran O'Connor, Treasurer Leanne Wright, Public Officer Craig Tate, Art co-ordinator Pam Dunne, committee members Julie Williams, Pat Tate, Patrick Riviere, Peter Dunne. Special thanks to the outgoing Vice President, Peter Auriac who has held a position since the creation of the WCN.
- **President's report summary**— Since stopping Sunday trading in the café catered functions have made up the financial shortfall so we are still financially secure. Although we have 72 members, **active volunteers** continues to be a problem. Many improvements to the café have been made. Excellent art exhibitions and Meet-the-artist evenings. Social media: Wootton Valley News and facebook pages provide a reliable source of community information. All volunteers were thanked. Also noted was that the President had put in an exceptional job throughout the year.
- **WCN General meeting**— matters discussed included local roads, saving O'Sullivan's Picnic Area and walk, occasional Sunday opening, Wootton Way sign and grant opportunities.
- **Community Hall**— the library is going well. New books have been donated. Since the tennis courts and shed have been cleaned usage has increased. The hall has been regularly used for the workshop part of the functions catered by the WCN volunteers
- **Crown land update**—no response from Crown Lands yet
- **2017 Strategic Plan**—still awaiting presentation to the new Council



Night photos by Pat Tate

Lots of feedback and practical information were shared at the pruning demonstration by Del Thomas at John Jenkin's place, Krambach. Organised by Dyer's Crossing Landcare Group.



Renowned tree farmer Rowan Reid launched his book: "Heartwood" at the Brush Turkey Café. Over 25 people from Wootton and surrounds were wrapt by Rowan's passion on how farmers, woodworkers, builders have benefited from planting trees bringing birds and wildlife back.



There are two tennis courts in the grounds of the Hall and Brush Turkey Café. One has a fixed net, the other has no net and can be used for all types of activities—eg badminton!



Brush Turkey Café: New artist

Anna Brown, from Bungwahl in the Great Lakes area, works from her home studio. Her main source of inspiration is from the immediate environment especially the local bushland and lake. Plants are the starting point for creating most of her textile pieces. She loves designing and making contemporary art quilts, while still incorporating traditional sewing techniques. This year, Anna won the Quilt National Emerging Artist Award.

Come and meet Anna on Friday night, 20th October, from 6pm in the Brush Turkey Café.

WOOTTON CUP.

One of our regular graft groups are holding a fun event **Saturday 11th November** at 4pm at the Wootton Guest House. Gold coin spectator fee as well as gold coin



participation fee If you wish to enter the fun race which will start at 4.15pm please bring along your hobby horse, broom or mop. Champagne & nibbles Prizes to be won, even best hat or outfit. All money will be donated to the Wootton Fire Brigade.



HOPE TO SEE YOU THERE

MidCoast Council has a new Mayor, Cr David West. You can meet him and his team at Bulahdelah School of Arts hall on Thursday 26th October from 6 to 8pm.



Photos by Sue Filson during the recent **Stroud Writers Group** workshop held in the Wootton Hall with catering provided by the WCN volunteers in the Brush Turkey Café. An outstanding success.



Practical Lantana Control: Techniques and Strategy

Crawford River, Free

**October 13,
10am—1pm**



Lantana is considered Australia's worst weed!

Terry Inkson, MidCoast Council and Glen Jonas, TIDE's Bush Regeneration team host a hands-on morning in the field, will discuss Lantana control strategies, demonstrate techniques for different situations and give an update on emerging weed threats.

Optional working bee in the afternoon.

Hosted by Karuah Great Lakes Landcare
RSVP Joel Dunn by Oct 11 0401 932 533



Fire permits have been **cancelled** until further notice due to the very dry conditions. The Brigade has been out to many fires in the last month. Fires have been severe enough that we have been deployed to protect houses on many occasions.

FIRE PLANS—if you don't have one—MAKE ONE!

If you do have one—MAKE SURE IT IS UP TO DATE!

Find details on www.rfs.nsw.gov.au

Important notice to all Wootton Brigade volunteers—training will now happen on the second Sunday of every month. Next training will be *Sunday 12th November from 9am* at the fire shed in Squires Rd. New members welcome. *Mike Badcock (Captain)*

Topi Topi Sustainable Farming Group

Annual Planning Session, Topi Topi, November 13th

Have your say on the future plans and activities of your local Sustainable Farming Group at a planning session facilitated by Local Landcare Coordinator Joël Dunn. Please RSVP to Sue Williams on 0438 433 063

Monique Finlay from Newmans Road has opened Blossom, Hair, Beauty and Wellbeing in Forster at Shop 3, Corner Head and Beach Streets. Monique is offering ladies and men's hair cuts, colours, facials, waxing, massages, manicures, pedicures, spray tans and special occasion make up sessions using all organic products.
Ph: 6555 5959



GOOD LUCK FROM WOOTTON!

Take control of your future health care!

Advance Care Planning Workshop

Sunday 22nd October, from 3 pm

Wootton Community Hall, Wootton Way, Wootton

Learn what Advanced Care Planning is and isn't.

Learn how to think, talk and share your plan.

If your choices for future health care are known they can be respected!

Entry: gold coin donation

Presented by Peter Dunne, a Wootton resident and Registered Nurse with over 40 years of experience and currently working in aged care.



Art Brown from Crawford River is providing a regular newsletter to update us on progress with wild dog control in the Bulahdelah district. The spring culling program started at the beginning of August with strategic district wide support from National Parks, Forestry, Midcoast Council and our LLS Biosecurity Ranger Laurie Mullen. Fourteen wild dogs were culled in the program taking the year-to-date tally to 87 (vs 81 in the full year of 2016). Increased activity is anticipated around November when the pups are being trained. Please continue to advise Laurie of any sightings and/or harassments on 0407 785 007 and forward any photos to Art on artbrown658@gmail.com

Dungog Seasonal Conditions Information Session presented by Hunter LLS

Wednesday 18 October,

9.30am to 12.30pm Dungog RSL

Morning tea and lunch provided

This includes a beef market update and outlook, livestock nutrition and feed budgeting, animal health advice, pasture options, summer fodder crops, hay and grain prices and availability and more to help producers make difficult decisions in these deteriorating conditions.

RSVP by 16 October 4932 8866 or

E: louise.cassidy@lls.nsw.gov.au or

debra.morris@lls.nsw.gov.au



Sat 18 Nov 5.30pm, Head St Forster



Sun 15 Oct 9-1pm
Chapel St, Tuncurry

Have you completed your biosecurity farm plan?

Meat and Livestock Australia require you to have a Biosecurity Plan in place NOW.

Without a documented plan you cannot move your cattle, goats or sheep off your property for any reason. Most of us practice farm biosecurity but now we need to have it documented.

You can find a Biosecurity Plan template at www.mla.com.au or if you would like to talk to someone, contact Local Land Services at Wingham on 6553 4233



The Saving our Species (SOS) program



is a program that addresses the growing number of plants and animals in NSW facing extinction. I was part of a team of biometricians from the Office of Environment and Heritage visiting the sites of two endangered species with a view to designing monitoring programs to assess the effect of interventions programs on their chance of survival. First was solanum sulphureum (pictured left) from the sassafras



family. Distribution is restricted to Taree-Wingham area. Paul Segal, Moorall Creek discovered the plant after removing narrow leaved privet and continues the fight to restore the plant numbers. Second was the critically endangered diuris flavescens (pictured right), a ground orchid belonging to the Doubletail or Donkey Orchid group, distributed in the Wingham-Tinonee area. It is often mistaken for a more common species. It is distinguished by the central bottom petal being ridged and folded like a v. The largest number can be found in Wingham cemetery, flowering now. We saw it on a Burrell Creek travelling stock route with the help of Andrew Pagett (Wildlife Flora). The plant can only be seen when in flower. The count is expected to be less this year with the very dry condition, making it very difficult to determine any improvement in counts. Details of the SOS program at www.environment.nsw.gov.au

Caro Badcock (photos from the internet)



**HAVE YOU SEEN THIS
ILLEGAL WATER PLANT?**

Watch out for and report

FROGBIT



Call the NSW Invasive Species
hotline on 1800 680 244 or visit
WeedWise at weeds.dpi.nsw.gov.au

Great Lakes Weed Outbreak Alert!

Frogbit has been found at Green Point—the first infestation identified in NSW! Please keep your eyes open and report it promptly.

Local Noxious Weeds Coordinator:
Terry Inkson (6591 7302)

Managing native vegetation on your property!

Information sessions:

Topics: understanding and utilising the new opportunities now available in the NSW Land Management and Biodiversity Conservation reforms, options for managing native veg on your property, relevant examples of how the new framework works on-farm and key benefits for land holders.

Gloucester 25 October 9am—12pm P: 65518994
Scone 26 October 9am—12pm P: 6540 2400



Grinding = Sparks → **FIRE**

Ride on mower = hot engine → **FIRE**

Slasher = sparks → **FIRE**

Before working: do a hazard assessment, check fire conditions, check clearance for grinding, **THINK of the consequences** .

Emergency on a farm—BE PREPARED

Being prepared for farm emergencies includes having good, appropriate First Aid kits, people on the farm trained to provide first aid including CPR, effective farm communication and Emergency Plan and an Emergency Contact card beside phones to help contact emergency services.



First aid kits should be suitable to treat the types of injuries that occur and the number of people working on the farm. Injuries include snake and spider bites, sprains, cuts, burns and broken bones, crush injuries to hands, feet, arms and legs, electrocution, drowning, eye injuries, amputation of arms and legs in unguarded PTOs, grain augers, post hole diggers and drivers and quad bike crush injuries. First Aid kits



are available from St John Ambulance, Australian Red Cross, chemists, Stock and Station agents, hardware stores and rural supply companies.

More details on preparedness at www.farmsafe.org.au/emergency-preparedness

* * * REMEMBER TO CHECK FACEBOOK FOR LAST MINUTE EVENTS * * *
* * * REMEMBER TO READ THE ON-LINE NEWSLETTER TO SEE LARGER PHOTOS * * *

Wootton Directory contains important local contacts . Please email Caro (ed) if you know of an important contact that we should include here. Thanks.



Wootton Community Network

President: Jim O'Connor 0412963161
Secretary: Fran O'Connor
Treasurer: Leanne Wright 4997 7201
Email: brushturkey@live.com.au

Wootton Community Hall Committee

Chair/Bookings: Caro Badcock
0408 415 420

Wootton Preventive Health Clinic

Osteopath, Jenna Norrie 0488 520 456
Podiatrist, Dot Williams 0406 287 694

Topi Topi Sustainable Farming Group

Chair: Sue Williams 0438 433 063

Wootton Rural Fire Brigade

Captain: Mike Badcock 0409 448 330
President: Adam Garnett 0428272629
Sen Dep Captain: Craig Tate
0431644953

Karuah Great Lakes Landcare

Joel.Dunn@glcr.org.au 0401932533

MidCoast Council: 6591 7222

Police

Senior Constable Trevor McLeod,
Sector Supervisor, Bulahdelah
4997 4204 0427233745

State Emergency Service 13 2500

Local Land Services (Wild dogs)
Wingham 6553 4233

State Forests Wauchope 6585 3744

National Parks & Wildlife

6591 0300

Tuncurry Fire Control: 6539 7700

Bulahdelah Waste Facility

opening hours

Tuesdays 1—5pm

Fridays 12—4pm

Sundays 10-2pm

DIRECTORY

Accommodation

Wootton Guest House

Too many visitors? 4 air conditioned bedrooms with en-suites and balconies. Reasonable rates. Contact Peter & Leanne
www.woottonguesthouse.com.au
4997 7201 0407 974 420

Earth Moving/Tractor Work

David Knezevic

Excavation, demolition, auger, rock hammer, grab bucket, tipper, truck hire
4777 7402 0410 441 428

Slashing and Excavating Services

Chris Nebauer

Free quotes, all areas, no job too small or too large. 70hp 4WD tractor, heavy duty slasher or mulcher - 4.5 ton excavator with auger, bobcat, tipper.
www.slashingservices.com 0416 128 502

Property and Livestock Services

Tony Mills

Rural and domestic handyman, maintenance, repairs and other projects. All fencing. Garden maintenance, mowing, landscaping. Shearing sheep & alpacas, plus other animal husbandry tasks. Free quotes. All areas. Years of experience and skills. 0427 332 155

Real Estate

Edes Real Estate Pty Ltd

Stock and Station agent and property management www.edes.com.au
Brian Ede 49974566 0408 492 883

Rural Valley Realty, Coolongolook

Local agent for 25 yrs. Rural specialist.
Steve Devries 0458 448 019 4997 7214

Builder

Binna Burra Construction

Custom building and carpentry, servicing Smiths Lake, Pacific Palms, Wootton, Nabitac, Forster and surrounds.
www.binnaburraconstruction.com.au
Lic no. 299434C 0421 245 197

Advertising for Wootton Valley News Directory

\$50 per four line ad space (6 issues)

Renewals 1st July

These businesses support this newsletter.

Please support them wherever possible.

**New advertisers welcome, contact Leanne at
woottonguesthouse.com.au**

Wootton Livestock Transport

Neil Ede

For any livestock handling needs. 30 years experience. 0407 787 920

Bulahdelah Post Office

Bank@Post personal and business banking needs, passports, travel and computer needs, phones, gifts and more. Bendigo bank.
Mon-Fri 9am-5pm Ph 02 4997 4283

Health: Podiatrist

Dot Williams

Local podiatrist available for all foot care. Weekly clinics at Bulahdelah and Wingham, home-visits throughout the district.
williams.dot@gmail.com 0406 287 694

RPS Enterprises Bus Services

Paul and Renee Spiteri

Charter bus available. Will be offering day tours, travel to entertainment venues, long lunches, anything within reason for a trip.
49977149 or 0407 298 954

**Looking for a function space with
or without catering?**

Look no further!

Wootton Hall = function space

Brush Turkey Café = catering

Contact: Fran 49977323, Caro 0408415420