

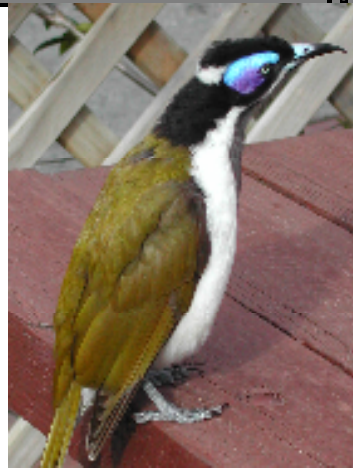
WOOTTON VALLEY NEWS

OCTOBER- NOVEMBER 2009 NO 62

DISTRIBUTION 500 WOOTTON COOLONGLOOK
BUNGWAHL BUNYAH BULAHDELAH

Blue-Faced Honeyeater *Entomyzon cyanotis*

This is one of the first birds heard in the morning, sometimes 1/2 an hour before sunrise. Its calls are noisy and varied, repeated and penetrating. It is a large black, white and golden olive-green honey-eater with striking blue skin around the yellow to white eye. It is usually seen in pairs or small flocks. It is known as the Banana-bird in tropical areas, for its habit of feeding on banana fruit and flowers. Mostly found in open forests and woodlands close to water, the Blue-faced Honeyeater feeds mostly on insects and other invertebrates, but also eats nectar and fruit from native and exotic plants as well as on flowers and foliage. It forms breeding pairs, and may sometimes be a cooperative breeder, where immature birds help the main breeding pair to feed nestlings. Most nests are made on abandoned nests. Both the male and female tend the young birds, sometimes with the assistance of helpers. The fledglings remain with the parents for some time after fledging. Often seen in our area.



COMMUNITY CALENDAR

Saturday 10th October	Movie & Supper night 7pm Brush Turkey cafe
Friday 9/16/23/30th Oct	Men's Night 5pm Wootton Hall
Friday 16th October	Ladies Night Brush Turkey café 5pm
Saturday 31st October	Community Dinner "Halloween" 7pm Brush Turkey café
Monday 12th October	Wootton Way Clean Up 9am (meet at café)
Sunday 1st November	Wootton Fire Brigade meeting 9am
Friday 6/13/20/27th Nov	Men's Night 5pm Wootton Hall
Friday 20th November	Ladies Night Brush Turkey café 5pm
Saturday 28th November	Community Dinner "Thanksgiving" 7pm

Published by Wootton Community Network Inc

Editors Bronwyn Little 49977185 and Pat Tate 49977292

Phone: 49977296 brushturkey@live.com.au Visit our website @ www.wootton.org.au

Wootton Community Network

Meetings are held on the first Thursday of every month, 7pm , at the Brush Turkey Café. Next meeting dates are 5th November & 3rd December. ANYONE AND EVERYONE is welcome to attend these meetings.

Bus Trip to Hunter Valley Vineyards

The Wootton Community Network is planning a bus trip to the Hunter Valley vineyards at the end of November, date to be announced. If you are interested please leave your name at the café on 49977296.

Café News

Cafe Volunteers Call Leanne on 49977201 if you would like to volunteer. Full training is given.

Sunday Newspapers

The Sunday newspapers are now being delivered to the Brush Turkey café. You can order your copy by ringing Leanne on 49977201.

Community Dinners

October's dinner will be "Halloween". Dress up in a ghoulish fashion and be part of the fun. Expect some deliciously devilish food.

November's dinner will be a "Thanksgiving" theme, with turkey and pumpkin pie etc. Book early, on 49977296.

Catering for Manning Respite

On Monday 28th September the Brush Turkey café catered for a group of 25 people from the Manning Respite Centre to acknowledge the start of Dementia week. Feedback from the customers was very positive. Thanks to Pat, Bron, Dulcie, Fran and Jim for their time.

Cafe Garden

There will be a working bee in the café garden on Monday 19th October 9am - 12pm. Our resident gardener, Tracey, has moved away and our garden is in need of some TLC. Bring gloves and tools. Morning tea will be provided. Donations of manure would be appreciated.

Artist at the Brush Turkey Cafe

Our local artist Friedel Warmers is currently exhibiting some quality oil colour paintings in the café that are well worth a look. Next month we will be exhibiting a compilation of local residents' art works. If you would like to exhibit 1-2 works in any medium contact the café and leave your name.

Thankyou to...

- * Walter Hacene for repairing the pavers outside the café.
- * Peter Molloy for cleaning the shade sails outside the café and
- * Geoff Williams & Jim O'Connor for reinstalling the sails.

Don't forget... the Men's Night held every Friday night in the Wootton Hall at 5pm and the Women's Night held on the 3rd Friday of the month at 5pm.



MOVIE & SUPPER NIGHT

Saturday 10th October

Brush Turkey Café

Arrive 7pm

\$10 includes supper & nibblies

Bookings 49977296

Halloween Night Dinner

Saturday 31st October 7pm

\$20 per adult, \$10 teenager,

\$5 child

Dress up and win a prize

Book early on 49977296



Clearing Sale MJ & V Schulenberg

57 Hubbards Road North, Wootton

(First driveway on the left)

Saturday 10th October,

Auction starts at 11am

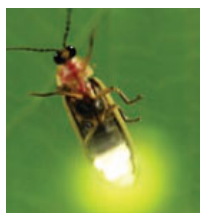
Machinery, Vehicles, Agricultural Equipment,

Saddlery, Livestock & more. For more detailed information

contact Gooch Real Estate (goochagencies.com.au) 65581205.

The Wootton Fire Brigade

will be catering for this auction.



Fire Flies take flight in October

Watch out over the next few weeks for the return of the magical fire fly experience. In the early evening, flashing lights can often be seen cruising around in the forest.

These misnamed beetles use these flashing lights to

attract the opposite sex. The light is created by an en-

zyme (luciferase) which reacts with other chemicals in the insect's body to

produce light energy. The firefly regulates the emission of light by control-

ling the amount of air supplied to the cells. Both the firefly larvae and

wingless females can also be known as glow worms. Seen in protected areas.

WOOTTON WEEDERS

A number of enthusiastic people in Wootton have begun a volunteer group called 'Wootton Weeders' and are registered with the Great Lakes Council.



Common small leaved privet

We meet about every two weeks on the corner of Elmar Rd and Possum Pie Rd to get rid of the privet and other weeds along Carrington Creek by the bridge.

The plan is to make that corner a pretty picnic spot as well as allow

access to the lovely creek hiding behind the privet.

Great Lakes Council have already provided a wooden picnic bench and chairs as well as offering to provide new plants such as Dianella to go along the creek's edge to help beautify the area.

This developed from a weeding demonstration meeting run by the Council at Eric Wilkes' place a few months ago. There have been several weeding sessions and you will notice a difference already if you ever drive down that way.

Other areas along the Coolongolook River are also being cleared of privet by the Wootton Weeders.

If you would like to join in and help weed Wootton - perhaps along the river near you - then call Judy Hammond on 4997 7272 for more details.

Judy Hammond

Wootton Way Clean Up

A second clean up was undertaken on Monday 31st August. Six people, Pat & Craig Tate, Bron Little, Judy & John Hammond & Robert collected rubbish from the southern end of Wootton village. Another large trailer load of garbage was collected including an old wheelbarrow, large kids pool, household rubbish and the obligatory take away food containers. Another clean up will take place on Monday 12th October 9am-11am. Meet at the cafe. Have you 2 hours spare to help?

WANTED used feed bags to use for rubbish collection. (council have run out of the clean up Australia bags)



Another trailer load of rubbish picked up along Wootton Way!!!!

OPEN GARDEN DAY HELD AT MERRIWONGA

On Sunday 13th September Mareah and Robert Rhodes-White kindly opened their garden at "Merriwonga", Wootton, as a fundraiser for the Bulahdelah Hospital. The garden was beautifully prepared and admired by many people as they strolled around. Mareah and Rob provided morning and afternoon tea complimented by delicious cakes and slices from helpful friends. The Coolongolook Sewing Group set up a great stall with handicrafts and cakes to sell, giving their profits to the hospital. The Bulahdelah Garden Club members sold many plants they had donated. A White Elephant Stall provided lots of interesting bargains. Mareah and Rob also provided the prizes for the raffle. A substantial sum of \$1549 was raised for the hospital thanks to the generosity of the visitors. The ladies from the Hospital Auxiliary would like to thank the many volunteers who worked all day to make the open garden such a success. Sue Smith

A White Out Experience...Last Wednesday 28th September, as a result of the smoke and low fog along Wootton Way, visibility was virtually zero. After leaving home at 6:30 I entered the O'Sullivan's Gap area and found I was in a white out. I travelled another 100m before realising it wasn't going to get any better. I couldn't see where I was on the road or the bonnet of my car. Deciding it was too dangerous to go any further I stopped to get my bearings. I managed to find the edge of the road by opening my car door. Then turning around I headed back north where visibility improved. As I started up the mountain 2 cars and five semi's sped past me into the smog, I waved and flashed my lights frantically as they passed. I realised the freeway must be closed too. The experience was one that was quite unnerving. A Local resident

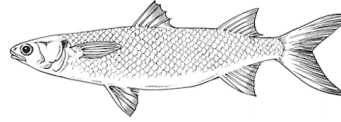
DOG TRIALS HELD IN WOOTTON

Ede's in Wattle Hill Road hosted their inaugural dog trials weekend on the 26th/27th September. From all reports it was a well attended and enjoyable weekend. The accompanying picture shows Peter Walsh from Kangaroo Point with his trophy that he & his dog won. Peter stayed at the Wootton Guest House and is seen here enjoying coffee at the Brush Turkey café.



Great Lakes Catchment Management Group

The third meeting of the GLCMG for 2009 was held on the 12th August at Bulahdelah. Apart from the usual agenda items reviewing agency and non-government organizations action plans for the next quarter and any matters requiring joint action, we were privileged to presentations from Forestry NSW on how they manage water quality within their forests and National Parks and the DPI on jointly funded projects.



James Jagers, Planning Manager Central Region, Forests NSW gave us a regional overview of forests in NSW. We are part of Central Region. They are responsible for 430,000 hectares of forests, 8,000 of which are logged annually (<2%). They are also responsible for 5,000 km fencing and 9,000 km roads. Usually only 60-70% of the net harvest area can be logged due to physical challenges such as rainforest and old growth exclusions or mapped drainage lines with fixed buffer zones to protect waterways from run-off. Dr Ashley Webb, Water Monitoring Manager and Research Scientist then went on and spoke about how riparian zones are managed within state forests. They mostly do not log in riparian zones and have environment protection licenses to mitigate the impact of logging. These are practical measures to protect aquatic environments and they also have to monitor the results. Measures include soil conservation when designing bridges, culverts and causeways, drainage, seasonal harvesting restrictions, slope restrictions for harvesting, wet weather restrictions and protection of drainage features. Research has shown that the major source of pollution is from roads, snig tracks and log dumps. A 10m filter strip removes 80-90% of the runoff. Ashley was asked about the impact of wildfires. These can increase pollution by 1000%. However hazard burns are not planned yet with water quality in mind!

Dave Bearup, NPWS spoke about the Myall Lakes National Park Trail Rehabilitation Project. The objective of the project was to reduce the pollution of waterways, in particular to protect the RAMSAR wetland in the Myall and improve the water quality in the Crawford River. The area to the west of Bulahdelah was transferred from Forest NSW to National Parks a few years ago. There were 250km of roads in the area that were highly eroded or steep. So far 74km of roads and trails have been treated; 39 km closed and rehabilitated and 35 km that have been structured to manage erosion and sediment. Dave showed us a selection of before, during and after shots that highlighted the effort involved and the exciting results.

Jenny Fredrickson, Conservation Management Officer, Port Stephens DPI spoke about the Bringing Back the Fish Project, a 3 year project funded by CMA. There are apparently 4,000 weirs in the state! Looking at the coastal barriers there are 1,743 road crossings, 1,117 flood-gates and 457 weirs and dams so they need to prioritise the activities. Criteria include area or length of waterway that will be opened up to fish, the species affected, the quality of the in-stream and riparian habitat and so on. In the Great Lakes area the priorities are Bulahdelah Weir, Lockett's Crossing and Flaggy Crossing. You will have read about the success with the fish passage at Lockett's Crossing in the Creek to Coast newsletter. This passage has opened up 70km of stream to various fish species including bass and mullet! I was invited to attend the formal launch of the fish ladder at Lockett's Crossing on September 28 and was impressed to see that even with the low water levels the fish were enjoying the pools they could reach.

Caro Badcock, Wootton Community Representative

Wootton Fire Brigade News



Fire Incidents During the last 3 months your local Brigade has attended 16 incidents (Summer has yet to arrive). Many of these incidents have required both our fire fighting vehicles & crews of 7 people. Some fires have required fire-fighters to spend up to 22 hours on duty, one member has been hospitalised with smoke inhalation & another was lucky to be six feet away from a falling tree, that cut off his water supply. The brigade has had to protect houses & sheds from quick moving bush fires. Also unfortunately the brigade has attended fires where arson has been suspected.

Fire Permits From the 1st of October 2009, Fire Permits will be required for any fire.

- * RFS Fire Control Tuncurry (6555 5782, Mon-Fri 9.00am to 4.00pm.) must be notified 24hrs prior to lighting any fires.
- * All neighbours must be notified 24hrs prior to lighting any fire.
- * Any fire that is lit with a permit must be completely extinguished, if a total fire ban declared.
- * Permits will be issued on Thursday. To make an appointment for a permit, contact Mike Badcock on 49977337.

New Members Required Currently your community's Brigade has only 16 active members, we desperately require more volunteers, (if your are over 16, male or female & have any spare time please consider joining the Wootton Fire Brigade). Application Forms are available from Mike Badcock 49977337.

Water Mapping The Wootton Brigade are currently putting together a map showing the positions of dams and water supplies that are accessible for fire fighting. Contact the fire brigade to add your dam to the map.

Hazard Reduction Burn and Training Day There was a good turn out of volunteers last month at the Tate's property where members acquired skills for fighting fires. It was a valuable training day considering the many fires that were to follow.

Community Awareness Evening Many locals attended the night at the Wootton Hall to have their questions answered in regards to preparing their property for the upcoming fire season. For more information contact the local fire brigade. Next meeting will be held at the fire shed, Squires Rd on 1st November 9am.



Wootton Brigade Captain
Mike Badcock



Hazard Reduction Burn Training exercise
Pre Burn Briefing

DIRECTORY

Accommodation

Too many visitors! **Wootton Guest House**
4 a/c bedrooms with ensuites & balconies,
reasonable rates. www.woottonguesthouse.com.au
Peter & Leanne **49977201 0407974420**

Air Conditioning

Repairs, sales, installation. Domestic and
commercial. Mark Tidbury Lic no 123069C
0427500329 49977308

Building & Maintenance Contractor

Solutions to building problems Lic 631C
Rob McDougall **0427 955958 49977335**

Church Open House Every Sunday

Arrive at 10am. Share lunch, fun for kids.
Entrance opposite Forest Lodge on Wootton
Way. Dave and Kathy Barker **49974675**

Computer services

Software installation, cleanup, Website de-
sign, Hardware upgrade,
Custom build! New parts warranty.
Peter **49977223**

Earth Moving

Excavation, demolition, auger, rock hammer,
grab bucket, tipper truck hire
David Knezevic **49977402 0410 441428**

Electrical Services RDO Electrical Services

Rob Oxford C/LIC No. 8811C All areas
790 Wattle Hill Rd **0416 090887**

Horses Gembiras Docs Onyx dual sire reg-
istered stallion AQHA-A17174 ASH-
SM133207 Standing at stud: progeny usually
for sale. Gembira Horses
49977335 0419201913

Massage Trigger point, therapeutic & reme-
dial massage. Day Spa body treatments &
facials using 100% natural & organic hand-
made products. www.lotusretreat.com.au
Kerry Bromage **49977320**

Paving Down to Earth Paving - Patios,
paths, driveways, brick edging Lic no
37348C Walter Hacene **49977344**

Painter

Shaun Clarke Interior/exterior colour
Consulting & feature walls **0411 253500**

Plumber

Richard Green Plumbing All plumbing,
drainage, gas & LPG fitting, domestic,
commercial, industrial Lic no. 53903C
0418 618583 65591555

Renewable Energy

STS Services P/L Solutions toward Sus-
tainability, Solar systems Grid connect or
Stand alone Lic 27928C Accredited
F524 **49977167 0417369670**

Real Estate

Edes Real Estate Pty Ltd - Stock & Sta-
tion Agent & Property Management Brian
Ede www.edes.com.au **49974566**
49977180(A/H) 0408492883

Removals

Dave Barker Removals
"Moving with Care" **49974675**

Transport

G.T. Delivery Service Neil Ede
Daily runs Newcastle to Taree
Same day service **0412496566**

Auto recycler, moving cars, machinery,
caravans, yard clean-ups, reasonable
rates. Dodgy Bruvers Transport
65529130 0401880352

For Sale (This service is free)

Push Lawn mowers from \$100 Ph 49977404

**Advertising rates for 2009/2010 for the
Wootton Valley News Directory are
\$55 for Non-members,**

\$45 Members -per 4 line ad space

Please contact the editors for new
advertisers or wording changes.

Please send a cheque payable to the
Wootton Community Network at

1633 Wootton Way, Wootton 2423 Advertising
due 30th June. These businesses support this
newsletter. Please support them wherever
possible.