

WOOTTON VALLEY NEWS

JUNE/JULY 2020 NO 126

DISTRIBUTION WOOTTON COOLONGLOOK
BUNGWAHL BUNYAH BULAHDELAH

Manning Valley Helmeted Turtle (*Wollumbinia purvisi*)

The Manning River helmeted turtle has only been found in middle and upper reaches of the Manning River. It has a distinctive appearance, with yellow markings on its neck, and was declared endangered in 2017 due to foxes and habitat loss. Locals have formed the Manning turtle Conservation Group to raise community awareness while the Office of Environment and Heritage coordinates a rescue plan including breeding turtles in captivity to release into the river.

<https://www.nsw.gov.au/regions/hunter/latest-news-and-newsletters/h-news/2020/unique-manning-turtle-getting-a-helping-hand>



COMMUNITY CALENDAR

Wootton Community Network events are on hold during the lockdown.

Please check online or email the Secretary for updates brushturkey@live.com.au

The Wootton Valley News is usually delivered before the 1st day of each *second* month.



Published by Wootton Community Network Inc , created by Fred Fetherston & Sylvie Riviere

Contact us by email brushturkey@live.com.au

Visit our website wootton.org.au and [Wootton Community](https://www.facebook.com/WoottonCommunity) Facebook public group

Wootton Community Network News

Dear Fellow Members of the Wootton Community, as I sit here this morning writing for the WVN I think I am seeing the light at the end of the virus tunnel. When can we use our Wootton Community Centre facilities is the question we are all asking. As well as the State Government restrictions we are subject to the Crown Lands restrictions on our reopening. We will respond to the Government restrictions and we will be talking with Crown Lands in the coming days and hopefully see a safe way to manage a staged increase in WCN activities and the community dinners in particular.

The work of the Wootton Community Network Committee is continuing through the virus restrictions mostly by way of Zoom meetings and phone calls, and the Committee meeting minutes will be distributed as usual to WCN members by email. We have sent a longer letter to those in the community whose email addresses we have and by including this information here hopefully we reach the whole community.

In response to the virus the WCN set up a small group of volunteers who indicated they would be willing to help with supplies for individuals who could not go out. This group has not been called on at this stage, however we thank them for volunteering.

Part of the work of the WCN Committee is to manage the Crown Lands that comprise the Community Centre (Cafe, Hall etc.) and the School Teacher's House. Income generated can be used for improvements to the facilities for the benefit of the whole community. Community dinners, Food Trails and rent on facilities make up the bulk of the income. Despite the lack of some community dinners and other income activities this year there are still some funds available to carry out works.

Expenditure so far this year has mostly been on maintenance at the School Master's House. One other minor improvement involves removing the cattle grid at the entrance to the grounds off Squires Road as the grid has caused some problems to entering vehicles. This work will be carried out in the near future.

In order to look at wider facility issues a Grounds Sub Committee was set up earlier this year. The grounds sub committee seeks wide community input and involvement and has created a survey for community comment. If you have not received the survey by email it means we do not have an email address for you. If you would like to have your say in the survey please contact the WCN Secretary.

I wish you all the very best especially at this time. Please feel free to contact myself or the WCN Secretary should there be issues where the WCN can be of benefit.

Sincerely, Bill Buckland, President WCN



Annual membership fee \$12.50 pp - Payable by direct deposit to:-
Wootton Community Network Inc.

Regional Australia Bank

BSB: 932000 Acct: 50002358 Reference: "WCN20" and your name

Please email when paid to notify the Treasurer brushturkey@live.com.au

Or you can pay at an event or post a cheque with the form.

Please fill in the membership form with your details for all renewals and new memberships. Email brushturkey@live.com.au if you need a form. Thanks.



Ruby, Gary C. and Carter of the Cross gang at Dengar Garden bringing a bit of magic to bin night during lockdown ©G-D-Cross



Paul Spiteri at dawn in his driveway to commemorate ANZAC day on 25 April 2020



Toby from Newmans Road turned on Monday 13 in April 2020



Lazy Acres Farmstay Autumn harvest

ERNEST JOHN SQUIRES better known as "JACK"

Born in Bulahdelah in 1928, Jack spent most of his life in Wootton growing up on his parent's farm, three miles out on Squires Rd.

He attended Wootton school from age 7-13 then he had to leave to help his mother on the farm, as his father and brother were away during the war, but still in Australia. All his children and some grand children also attended Wootton School.

He worked in the forestry at about age 20, and married Ivy May. They moved to Krambach where he worked in the bush and later in the saw mill. When the mill burnt down early 1953 they moved back to Wootton, he was now 25. On the 6th June 1953 he bought 119 acres on both sides of Squires Rd, the first property off the Pacific highway, now the Wootton Way. He took up dairy farming with the help of his wife and children while working in the forest and with the DMR.

He was very community minded, and a wardsman of the church. He ran dances in the Wootton Hall and was a good dancer and loved music. He was also president of the hall committee, the P&C, tennis club and captain of the fire brigade. He was always there for working bees and any community projects. He sold his properties in Wootton late 2006 and moved to Taree then Wingham.

Sadly JACK passed away 24th April 2020 aged 91, 37 days off 92.

Many more family members, friends and Woottonites sadly missed JACK'S funeral due to rules of Covid-19.

JACK had a great innings.

Written by Fay, JACK'S daughter.

Read more about Jack and life around Wootton at wootton.org.au/history.shtml#





Animal and Pasture health alerts following Rain. District vets are seeing some serious and deadly stock health issues as they access newly recovering drought-stricken pastures, and supplementary feeding is ceased. Early regrowth of highly stressed pastures is green and delicious but is overly watery, devoid of nutrition, rife

with weeds, and can even be toxic. Moreover, ruminants take very poorly to sudden dietary change. It is best for cattle to slowly adapt over at least a couple of weeks. Importantly, pasture ecosystem health and resilience is best served by letting as much pasture as possible have an extended recovery time after drought, so that perennial roots can establish depth, and groundcover can be properly re-established, giving better soil infiltration and water holding capacity. If you have been heavily reliant on supplementary feeding, please don't stop suddenly. Contact Dr Lyndell Stone lyndell.stone@lls.nsw.gov.au to join the producer email list for more updates. Joël



WOOTTON RURAL FIRE BRIGADE BURN OFF NOTIFICATIONS

Many burnoffs happen in Winter, make sure our Brigade only gets called out to emergencies

At least 24 hours before burning, you must notify your local NSW RFS Fire Control Centre or Fire & Rescue NSW Station of your intention to burn (unless specified otherwise in your permit). The fire authority will record the information and monitor weather conditions. You must also notify any adjoining neighbours (including those separated by a road, lane or waterway) at



least 24 hours before burning. Your neighbours may be exposed to the smoke from your burn and may need to make preparations to avoid any negative impacts (medical conditions, impacts on sensitive crops, livestock and pets).

IF YOU DO NOT PROVIDE NOTIFICATION, YOUR NEIGHBOURS MAY CALL EMERGENCY 000 TO REPORT YOUR FIRE AND THE LOCAL FIRE AUTHORITY MAY TAKE ACTION.

Adam Garnett Captain 0428 272 629

www.facebook.com/woottonrfs/

rfs.nsw.gov.au/data/assets/pdf_file/0013/12451/BeforeYouLightThatFire.pdf



Fencing Season. Many landholders are busy replacing fences damaged by fires, or just taking advantage of the cool weather to make their fences secure and keep their animals safe. Great tips on how to make fences more friendly for wildlife (and people) are here wildlifefriendlyfencing.com/WFF/Home.html



Midcoast Council has information about support for landholders affected by drought and bushfires here midcoast.nsw.gov.au/Council/Emergencies-on-the-MidCoast/Recovery-from-bushfire-events



Pasture Weeds and Diseases from Hay “Pasture dieback” is a new disease appearing in the area, along with weeds, spread by hay brought in. Find out more online [ls.nsw.gov.au/data/assets/pdf_file/0005/1214744/LLS Weeds in Hay Booklet 2020 web.pdf](http://ls.nsw.gov.au/data/assets/pdf_file/0005/1214744/LLS_Weeds_in_Hay_Booklet_2020_web.pdf)

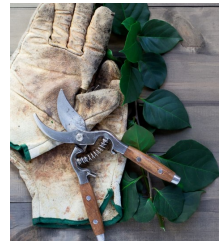


NSW POLICE FORCE

Community Portal

For non-urgent Policing needs you can now go online for crime and lost property reports. Call 000 for immediate danger

portal.police.nsw.gov.au/s/login/?ec=302&startURL=%2Fs%2F



Mushroom Season—look but don’t eat. Poisonous mushrooms including Death Cap mushrooms and Yellow staining mushrooms are currently growing abundantly. Eating just one Death Cap mushroom can kill an adult. Unless you are an expert, do not pick and eat wild mushrooms. In most cases the sooner treatment can begin, the better the outcome. If you think you, family or pets have eaten a poisonous mushroom, **seek medical attention urgently—do not wait for symptoms to occur.**



Poison information Hotline
13 11 26

Local landcarers online during shutdown. Local landcare groups have found lots of ways to run events and support landholders, until they can recommence group activities. Online events include Landscape Rehydration, Farmland and Bushland Recovery and Soil Health following Fire, Native Seed Collection and Seedling Identification for Weed Management, Bees, Mushrooms and many others.

To find more, join live facebook sessions and watch videos, "follow" the groups at facebook.com/MidCoast2TopsLandcare/ facebook.com/karuahgreatlakeslandcare/ youtube.com/channel/UCOuMf162UuYhYTNvBGHa-nw Joëll 0401 932 533

Did you know?

- Swift Parrots migrate from Tasmania to mainland Australia each Winter
- Regent Honeyeaters can fly up to 5000m to feed on their preferred blossoms.
- Both species are critically endangered in Australia.



"Birds Connect Our World" competition

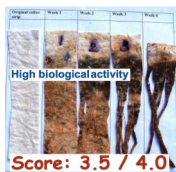
Landholders, farmers and property owners in the Hunter LLS region are invited to enter this great competition. **Register by 5 June 2020** and receive an e-bird-watching kit and support information.

Carolyn Jenkinson 0408 162 174

hunterlls.wufoo.com/forms/birds-connect-our-world-bird-watching-competition/

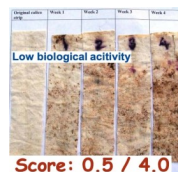
Hunter LLS New Board Members Election results are online, these local people help ensure your needs are represented for stock health, wild dogs, conservation issues.

www.lls.nsw.gov.au/regions/hunter/our-board



Is your soil working or is it in Lockdown? This simple "cotton strip" test can answer the question and help you get more happening below ground on your farm. Any good, clean strip of 100% cotton will let you test soil on your property while social distancing.

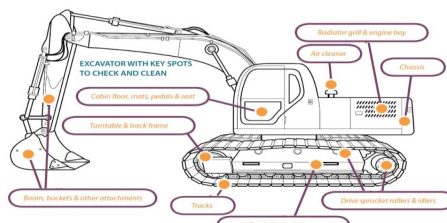
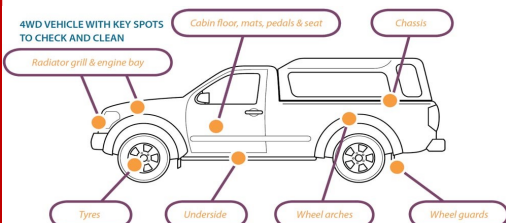
facebook.com/828101600581010/videos/226397778708321/



Are you having earthworks done at your place?

Jo L posted on the Wootton Community facebook page asking about excavators, and received many comments. Among them, *Peter D* shared a helpful warning.. "If you are getting earthworks done, make sure you ask the contractor to pressure clean their equipment before they bring it. There is phytophthora fungus in the area and one of the main ways it is transported is on equipment. It can wipe out fruit trees and severely impact the bush."

For more information view the powerpoint presentation at lls.nsw.gov.au/regions/hunter/community-advisory-groups/hunter-regional-weeds-committee-hrwc/stop-weeds-at-the-gate



LIDS For KIDS We have had a great response to our community collection station saving thousands of lids from landfill. Nation wide it's been so successful they are developing new products to be made for schools like learning aids and even tables. The production of prosthetic hands has halted trying to get the 3d printed version passed by Australian standards. **All Australian collection sites have been temporarily suspended due to covid 19** as it can live on plastic for up to a week under certain circumstances. If you can still collect lids please save them for when I reopen the collection site. We can use clean lids with recycle codes ♻ and ♻, lids from milk bottles, soft drinks and water bottles. Please **wash all lids and remove inserts**. We **CAN'T USE Vegemite, coffee pods or wine bottle lids**. Thanks for doing your little bit for our planet. *Walt.*

When you give specific items to a charity organisation, please, make sure it is in good condition



Farm-to-Fridge have added organic vegetables from Valley View Farm, a Vegan section and Kitchen. New customers always welcome Sue
farmtofridge.com.au

*** it's so easy to buy local ***

1. Go to www.farmtofridge.com.au
2. Sign up to weekly newsletter
3. SHOP

Wootton Directory contains important local contacts. **Always dial 000 for Emergency.**

Wootton Community Network

President: Bill Buckland
Secretary: Kate Hosey 0402 776 376
Treasurer: Leanne Wright 4997 7201
Email: brushturkey@live.com.au

Bookings—all facilities

*Celebrating something special? Running a Course or a Market?
Getting people together?*
Kate Hosey 0402 776 376

Wootton - Topi Topi Sustainable Farming Group (local Landcare)

Chair: Carole Robinson 0428 009 952

Wootton Rural Fire Brigade

Captain: Adam Garnett 0428272629
Sen Dep Capt: Bernard Carran 0409684177
www.facebook.com/woottonrfs

Midcoast Fire Control

Burnoff notifications 1300 643 262
(24hour prior notice)

Karuah Great Lakes Landcare

Joël.Dunn@glcr.org.au 0401932533

MidCoast Council: 6591 7222

State Forests Wauchope 6585 3744

Police: Sector Supervisor,
12 Meade St Bulahdelah
Senior Constable Trevor McLeod,
4997 4204, 0438 140 370
mcle1tre@police.nsw.gov.au

State Emergency Service 13 2500

Local Land Services

Wild dogs Laurie Mullen 0407 785 007
Rural Resilience Group
Peter Brown 0437 671 459

National Parks & Wildlife 6591 0300

Fawna Wildlife Rescue 6581 4141

Electricity Essential Energy 13 20 80

Bulahdelah Waste Facility

opening hours

Tuesdays 1 - 5pm, Fridays 12 - 4pm

Sundays 10-2pm

DIRECTORY

Accommodation

Wootton Guest House

Too many visitors? 4 air conditioned bedrooms with en-suites and balconies. Reasonable rates. Contact Peter & Leanne

www.woottonguesthouse.com.au

4997 7201

0407 974 420

Real Estate

Ede's Real Estate Pty Ltd

For all your Real Estate needs in Wootton, Bulahdelah and surrounding Areas

Agent & Agency Award Winners 2018, 19 & 2020

Your LOCAL AGENT 49974566 0408492883

Remember Choosing Ede's is choosing success

edes@edes.com.au www.edes.com.au

Wootton Transport

Neil Ede, Wootton Livestock Transport

For any livestock handling needs. 30 years experience. 0407 787 920

RPS Enterprises - "Bulahdelah Buses"

You require the transport we do the driving. Luxury Air conditioned seat belted buses available for wedding guest transport, winery trips, concerts, sporting events. Call Paul and Renee Spiteri to discuss your transport needs. 4997 7149 or 0407 298 954

Building - Plumbing

Tim McDonnell Lic no. 14660

Plumbing, Drawing, Roofing Guttering

Water tanks, Gas fitting

Wootton & all areas – 0418 682 199

Binna Burra construction Lic no.299434C

Custom building and carpentry, servicing Smiths Lake, Pacific Palms, Wootton, Nambucca, Forster and surrounds. 0421245197

www.Binnaburraconstruction.com.au

Pest Control

Bugs Or Us Pest Control

General pest and termite control.

Specialising in termite detection with our termite detection dog.

Pre-purchase inspections – 0490 454 644

Advertising for Wootton Valley News Directory
\$50 per four lines, \$5 per extra line (6 issues)

Renewals from 1st July

These businesses support this newsletter.

Please support them wherever possible.

New advertisers welcome, contact Leanne at
woottonguesthouse.com.au

Health and Beauty

Liarne's Hair and Beauty

A private home salon.

All ladies and men's hairdressing.

Waxing, relaxation facials, lash and brow

tinting. Air conditioning, eftpos facilities.

Tuesday to Friday 9am to 5pm 0412 833 700

Dr Lynette Arnoldus-Lewis

Psychologist—Nabiac, Approved DVA Provider—

Domestic violence, Marriage counselling,

Grief, Carers support, Family Issues

65541535

0429 190 142

lynette.arnoldus@bigpond.com

Yoga Classes with Naomi Patton

Wootton Hall 9.15-10.45am Wednesdays

for an active Hatha class where we will get moving, and on Fridays 9-10am we will

unwind with a gentle yin/restorative class, suitable for everyone, even those nursing

injuries., all welcome. 0414 387 008

Bulahdelah Post Office

Bank@Post personal and business banking needs, passports, travel and computer needs, phones, gifts and more. Bendigo bank.

Mon-Fri 9am-5pm 4997 4283

Photography Services

Jo Lyons Photography

Down-to-earth lifestyle pet photography by AIPP Accredited Professional Photographer.

Outdoor-studio sessions available in Wootton and surrounds. I also offer pro-bono services to local animal rescue organisations.

0412 617 928 www.jolyonsphotography.com

