

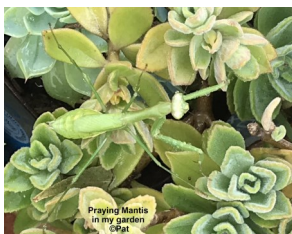
# WOOTTON VALLEY NEWS

JUNE/JULY 2019 NO 120

DISTRIBUTION WOOTTON COOLONGLOOK  
BUNGWAHL BUNYAH BULAHDELAH

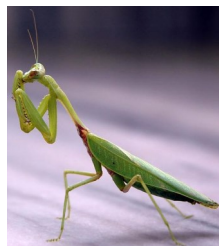
## Praying Mantis (*Orthodera* species)

Mantises belong to the “Mantodea” order of insects containing over 2,400 species worldwide, with about 430 genera in 15 families.



All Mantodea insects have forelegs that are greatly enlarged and adapted for catching and gripping prey; their upright posture, while remaining stationary with forearms folded, has led to the common name praying mantis.

The closest relatives of mantises are termites and cockroaches.



©S Shankar

## COMMUNITY CALENDAR

Sat 1 June	• Brush Turkey Café: Community Network Meeting, 3pm
Sat 8 June	• Chainsaw safety day— details page 3 • Wootton Hall: Food Swap 5pm • Brush Turkey Café: Supper night 6pm, \$10pp
Sun 9 June	• Wootton Fire Brigade Shed: training, Squires Rd 8am • Brush Turkey Café open for morning tea 10 to 11.30am
Fri 21 June	• Wootton Fire Brigade Shed: training, Squires Rd 6-8pm
Sat 29 June	• Wootton Hall Community Dinner Trivia Night, bring a plate, 6pm \$5pp
Fri 5 July	• Brush Turkey Café: Art night with Lindy Finlay exhibition, 6pm
Sat 13 July	• Brush Turkey Café: Community Network Meeting, 3pm TBC • Wootton Hall: Food Swap 5pm • Brush Turkey Café: Supper night, 6pm, \$10pp
Sun 14 July	• Wootton Fire Brigade Shed: training, Squires Rd 8am • Brush Turkey Café open for morning tea 10 to 11.30am
Fri 26 July	• Wootton Fire Brigade Shed: training, Squires Rd 6-8pm
Sat 27 July	• Brush Turkey Café: Community dinner 7pm, \$20pp

Please book early for Community dinners [brushturkey@live.com.au](mailto:brushturkey@live.com.au) If you have booked and can't make it please call the organisers so they can use the waiting list.

Published by Wootton Community Network Inc Editors: Fred Fetherston Sylvie Riviere

Contact us by email [brushturkey@live.com.au](mailto:brushturkey@live.com.au)

Visit our website [wootton.org.au](http://wootton.org.au) and “Wootton Community” facebook public group

## Wootton Community Network News

**The May general meeting** elected President Megan Griffiths, Vice President Craig Tate and Secretary Fred Fetherston. Fred was unable to continue in the role, so we require a new Secretary, and we are always looking for people to join the committee or to help with those little actions that keep our community hall and café operating. Whether you are a chef, a cleaner, an IT wiz, a health fanatic, or just a really good talker - we'd love you to get involved in any way - big or small.

The May meeting also formed a sub-committee, the "Crown Lands Management Group" (CLMG). Members are Chris Kennedy, Leanne Wright, Alan Fallshaw and Megan Kessler. It will ensure all activities on the reserve are consistent with Crown Land legal obligations, prepare annual reporting to Crown Lands, apply for grants from the Crown Reserves Improvement Fund, and drive the development of a Crown Land Management Plan. NSW Crown Lands recently released a Community Engagement Strategy to be followed when making decisions about Crown land and you will be asked what you want from our community resources. Read more about it online

[www.industry.nsw.gov.au/lands/public/community-engagement-strategy](http://www.industry.nsw.gov.au/lands/public/community-engagement-strategy)

and watch for updates on facebook and noticeboards, and of course you are welcome to share your great ideas on how to use the facilities at any time.

Thanks to *Maureen* and *Frank* for organising the April "South America" dinner and *Leanne* for Mothers' Day. Congratulations to Mothers' Day winners *Warren*, *Judy* and *Barbara*.

Come along to our next meeting on **Saturday 1st June 3pm at the Brush Turkey** to see how you can get involved, or if you aren't keen on meetings email [brushturkey@live.com.au](mailto:brushturkey@live.com.au), or contact a member and have a chat.

*Megan G, Megan K, Fred*





### Chainsaw safety day 8 June at Wootton

The Wootton /Topi Topi Sustainable Farming Group in partnership with Landcare will be running a free workshop on chainsaw maintenance and safe use.

This event has been rescheduled for Saturday 8 June, commencing 9.30am at the Brush Turkey Café. Morning tea and lunch will be provided. Please bring your chainsaw with you. Confirm your attendance with Carole Robinson on 0428009952 or Joel Dunn on 0401932533.

### Meet the new Wootton Community Network President, Megan Griffith

*"I remember my childhood – dancing with my Dad at the local hall and Mum cooking up pavlovas by the hundred; whether it was in fun or fundraising, everyone got involved. When we moved to the city in my mid-teens, with both parents working outside the home, I felt disconnected from the community and my roots. When Colin and I started our family, the simple joy of growing veggies in our backyard triggered something deeper. We wanted the kids to know where food came from and have a sense of connectedness with both community and nature. That is where my journey into environmental education began - my children weren't the only ones missing out. Our choice to uproot our family and move north was a simple one, to give the children the opportunity to flourish, to protect what is natural. Accepting the role as President of the WCN, is a great honour, and I hope to be able to bring my youth and enthusiasm to the community, to be able to nurture our growing diversity, while protecting what is truly precious – our sense of belonging."* Megan G



### Saturday 29 June 2nd Annual Wootton Trivia Extravaganza!

Rejuvenate your previous team, form a new team, or just come along and make new friends on the night.

We'll also have another paper plane competition and prizes for the winning teams. Our inaugural winner was 'Ella Fitzdrunk' (misheard 'Elephants Trunk'). Will they be able to do it again or will a new challenger emerge?

RSVP by Friday 21 June for your table of 8 or individual

Megan Kessler 0418 420 608



### Saturday 27 July— Community Christmas in July Dinner

Extra helpers will be needed for this big day. It's a double-header for Wootton, with volunteers catering for the Great Lakes Historic Auto Club at lunchtime, followed by the monthly community dinner. Come along wearing your "Volunteer" hat and smile.

### June Art Exhibition Sharon Hooper



Art has always been a passion and interest for Sharon, especially since retirement. Working in acrylics, she paints subjects which inspire her; the ocean and beach, landscapes, birds and more recently pet portraits by commission. Hanging in the Brush Turkey Café during June.

## A Forest in Wootton for Coralie's Birthday

*"Recently our daughter Coralie turned 1, and we decided that instead of getting clothes and toys, we would put the call out to family and friends to buy her a tree in Wootton instead. At 1, she's more interested in 'real' things like pegs and birds. We have a small home that is already too full of stuff.*



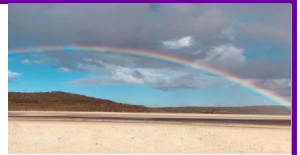
*We would also prefer that she truly receives gifts of life, not things that have a negative impact on the planet. There's a village in India where 111 trees are planted for every girl, so we made that our goal, and approached our friends Craig and Pat to see if the Wootton reforestation project could accommodate such an idea.*

*They are kindly dedicating some land for us, so with any luck Coralie will be able to still come and visit her little patch of forest when she's 80 and see it thriving. How many people can say that about their first birthday gift! For more information see our blog post at [www.biocast.com.au/forest-for-coralie/](http://www.biocast.com.au/forest-for-coralie/) " Kirsty*

### Thursday 6 June—Stroll along Smiths Lake Foreshore

Meet the local landcarers, see what has been achieved and what is planned. Learn to differentiate between weeds and non-weeds and pick up some valuable techniques to control these pesky habitat invaders.

Limited places, RSVP to Joël Dunn ph: 0401 932, email [joel.dunn@glcr.org.au](mailto:joel.dunn@glcr.org.au)



### Monday 3 June and Tuesday 11 June, 9-3 in Bulahdelah Property Planning

This free, two-day introductory course in our region is an opportunity not to be missed for new and experienced landholders.

Understand the production capacity and biodiversity values of your property, use aerial photograph-based mapping and develop an adaptable farm action plan.

Places are strictly limited, register <https://hunterlls.wufoo.com/forms/z1seovk6095fcs3/> or contact Daintry Gerrand on 0429 198 472 [daintry.gerrand@lls.nsw.gov.au](mailto:daintry.gerrand@lls.nsw.gov.au)



### Midcoast Libraries Data Merge

From March you will be able to go to any of our 11 library branches and use your current library card to borrow and return library items. You can reserve from over 135,000 items across the MidCoast Libraries network online or in person, and have

them delivered to your preferred branch. Bulahdelah is open Mon-Thurs 9-1, Fri 9-3 <https://library.midcoast.nsw.gov.au/Home>



## Wootton Community Network sponsors Coolongolook School Defibrillator

There will be a plaque thanking all sponsors with their names and logo when it is installed at the BP service station.



Wootton Community  
Network Inc



### Fast-charge your Electric Vehicle at Nabiac

The NRMA has installed a fast charger for electric cars (EVs) opposite the Nabiac Neighbourhood Centre and Preschool, 37 Nabiac St, Nabiac.

A special parking area is provided.



Koalas on the move in  
Wang Wauk forest!

### July Art Exhibition Lindy Finlay

Lindy enjoys painting landscape, still life and flowers. Nature has always been a source of inspiration for her artwork and prefers to work from sketches done 'plein air' then completed in her studio. She finds that painting still life is a great way to revise the elements of painting – tone, colour, shape and form. Lindy works in oils and acrylics but also other medium - watercolour, pastel, pen & ink.





## Wee Woottonites

launching the kids section

Share your drawings, poems, photos, craft ideas, stories...

[brushturkey@live.com.au](mailto:brushturkey@live.com.au)





### June-July Grant writing and Fundraising Workshops

Do you volunteer for your community? Need support to raise funds for your ideas? You can learn where to source information, access different types of funding sources, how to write a successful grant application, build your fundraising network and so much more. A FREE EVENT, registration is essential through this website <https://www.eventbrite.com.au/e/grant-writing-and-fundraising-workshop-tickets-61074827453>  
5 June Forster, 6 June Taree, 11 June Gloucester, 12 June Tea Gardens, 4 July Taree, 3 July Forster (*Megan G attending*)

**Sunday 23 June at Dungog. Guide to Plant Identification.** Learn how to identify plants on your property with the Hunter Farm Forestry Network, email [secretary@hffn.org.au](mailto:secretary@hffn.org.au)

## Think you've found a cane toad? *They've reached the Hunter!*

WHAT TO DO if you think you've spotted one:

**\*\*Always wear protective gloves and eyewear when handling potential cane toads. They extrude (and sometimes squirt) poison from glands positioned behind the head. \*\***The animal should be collected and held in a closed, well-ventilated, non-toxic container, with some water. **DON'T HARM THE ANIMAL** until we confirm what it is. **\*\*Photograph and report it to NSW DPI**

[www.dpi.nsw.gov.au/biosecurity/](http://www.dpi.nsw.gov.au/biosecurity/) or email [invasive.species@dpi.nsw.gov.au](mailto:invasive.species@dpi.nsw.gov.au)

Cane toads can be confused with some native frogs, which is why it's important you don't kill any suspected toads before reporting to the DPI. Find out how to tell the difference between a cane toad and a native frog.

<https://www.dpi.nsw.gov.au/animals-and-livestock/nia/new-incursions/cane-toad>



## Drought conditions—water quantity and quality on farms

Blue green algae remains an issue in farm dams, with very low water levels and water quality generally. Water Infrastructure Rebate may help

<https://www.raa.nsw.gov.au/grants/emergency-water-infrastructure-rebate-scheme>

## You can report road problems online to Midcoast Council, call (02) 6591 7222 for urgent safety issues

Council can only respond to the online form during normal opening hours

Monday to Friday 8.30am - 4.30pm



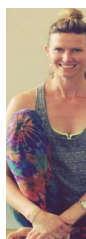
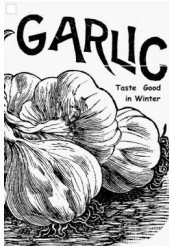
## Ferals and Stray Dogs around Wootton

Under Biosecurity legislation, wild dogs, ferals and weeds are the responsibility of every landholder. The new Great Lakes Wild Dog Management Plan was activated as at 1st January 2019 and the first four months of operation has recorded 65 wild dogs either shot or trapped. Art Brown and Laurie Mullen seek your ongoing support and in particular nominations of Landholder representatives covering **Wootton**, Booral/

Stroud, Nabitac and the Wallamba. Art Brown 0400 136 544 [artbrown658@gmail.com](mailto:artbrown658@gmail.com)

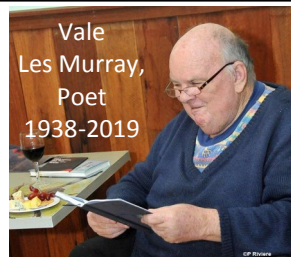
HLLS Laurie Mullen 0407 785 007 [laurie.mullen@lls.nsw.gov.au](mailto:laurie.mullen@lls.nsw.gov.au)

**Midcoast Council's planning review** For the latest "Community Conversation" updates, go to <https://www.midcoast.nsw.gov.au/files/assets/public/document-resources/council/projects-documents/community-conversations/bulahdelah-community-conversations-q-and-a.pdf>



## Yoga classes in Wootton

Naomi is seeking interest for an extra yoga class in Wootton, probably on Friday mornings. Enjoy a Wednesday class, contact Naomi 0414 387 008 or [naomi.patton@gmail.com](mailto:naomi.patton@gmail.com)



## WOOTTON RURAL FIRE BRIGADE

**CALL OUTS:** We have been busy with the usual call outs but top of the list have been residents lighting up piles without notifying Fire Control in Tuncurry or their immediate neighbours!

*It is a requirement that no matter what you light up, neighbours and Fire Control 1300 643 262 are advised no less than 24 hrs beforehand.*

You are also required to attend the fire, manage it, and ensure that it has been extinguished if you leave. False alarms are tiresome and frustrating as we are volunteers with properties of our own to manage!

**PREPARATION:** Winter may be here but Summer will follow very quickly so please take the opportunity now to formulate your Bush Fire Plan. Use the next 4 months to prepare your house and surrounding gardens, paddocks, and bush areas. If you need some guidance, call and we'll come around to discuss your Plan.

We are now half way through identifying safe, static water sources with good access for the trucks to fill from if needed this Summer. There are some great dams around the place and I would like to thank those residents who have given us access to their dams if needed. **EXTRA TRAINING will be held 6-8pm Fri 21 June and Fri 26 July.**

**Adam Garnett Captain 0428 272 629**



**Wootton Directory** contains important local contacts. **Always dial 000 for Emergency.** Please email [brushturkey@live.com.au](mailto:brushturkey@live.com.au) with others to include here. Thanks.



### Wootton Community Network

President: Megan Griffiths

**Secretary: Vacant**

Treasurer: Leanne Wright 4997 7201

Email: [brushturkey@live.com.au](mailto:brushturkey@live.com.au)

### Bookings—all facilities

*Celebrating something special? Running a Course or a Market?*

*Getting people together?*

Susanne Kennedy 0402 742 226

### Topi Topi Sustainable Farming Group

Chair: Carole Robinson 0428 009 952

### Wootton Rural Fire Brigade

Captain: Adam Garnett 0428272629

Sen Dep Capt: Bernard Carran 0409684177

Deputy Capt: Jim Garnett 0422916002

President: Adam Garnett 0428272629

### Midcoast Fire Control

Burnoff notifications 1300 643 262  
(24hour prior notice)

### Karuah Great Lakes Landcare

Joel.Dunn@glcr.org.au 0401932533

**MidCoast Council:** 6591 7222

**State Forests** Wauchope 6585 3744

**Police:** Sector Supervisor, Bulahdelah  
Senior Constable Trevor McLeod,  
4997 4204, 0427 233 745  
[mcle1tre@police.nsw.gov.au](mailto:mcle1tre@police.nsw.gov.au)

**State Emergency Service** 13 2500

### Local Land Services

Wild dogs Laurie Mullen 0407 785 007

Rural Resilience Group

Peter Brown 0437 671 459

### National Parks & Wildlife

6591 0300

**Fawna Wildlife Rescue** 6581 4141

### Bulahdelah Waste Facility

opening hour

Tuesdays 1—5pm, Fridays 12—4pm

Sundays 10-2pm

# DIRECTORY

## Accommodation

### **Wootton Guest House**

Too many visitors? 4 air conditioned bedrooms with en-suites and balconies. Reasonable rates. Contact Peter & Leanne  
[www.woottonguesthouse.com.au](http://www.woottonguesthouse.com.au)  
4997 7201 0407 974 420

## Slashing and Excavating Services

### **Chris Nebauer**

Free quotes, all areas, no job too small or too large. 70hp 4WD tractor, heavy duty slasher or mulcher - 4.5 ton excavator with auger, bobcat, tipper.  
[www.slashingservices.com](http://www.slashingservices.com) 0416 128 502

## Real Estate

### **Ede's Real Estate Pty Ltd**

For all your Real Estate needs Wootton, Bulahdelah and surrounding Areas  
Rate my Agent Winners 2018: Agent & Agency Award  
Your LOCAL AGENT 49974566 0408492883  
[edes@edes.com.au](mailto:edes@edes.com.au) [www.edes.com.au](http://www.edes.com.au)  
Remember Choosing Ede's is choosing success

## Wootton Transport

### **Neil Ede, Wootton Livestock Transport**

For any livestock handling needs. 30 years experience. 0407 787 920

### **Paul and Renee Spiteri,**

#### **RPS Enterprises Bus Services**

Charter bus available. Will be offering day tours, travel to entertainment venues, long lunches, anything within reason for a trip.  
4997 7149 0407 298 954

*Winter starts on the 1st June  
Stay Warm in Wootton*



**Advertising for Wootton Valley News Directory**  
**\$50 per four line ad space (6 issues)**

**Renewals 1st July**

*These businesses support this newsletter.  
Please support them wherever possible.*

**New advertisers welcome, contact Leanne at**  
**[woottonguesthouse.com.au](http://woottonguesthouse.com.au)**

## Health and Beauty

### **Dot Williams**

Local podiatrist available for all foot care. Weekly clinics at Bulahdelah and Wingham, home-visits throughout the district.  
[williams.dot@gmail.com](mailto:williams.dot@gmail.com) 0406 287 694

### **Liarné's Hair and Beauty**

A private home salon.  
All ladies and men's hairdressing.  
Waxing, relaxation facials, lash and brow tinting. Air conditioning, eftpos facilities.  
Tuesday to Friday 9am to 5pm  
4997 4498 0412 833 700

### **Dr Lynette Arnoldus-Lewis**

Psychologist—Nabiac, Approved DVA Provider—Domestic violence, Marriage counselling, Grief, Carers support, Family Issues .....  
65541535 0429 190 142  
[lynette.arnoldus@bigpond.com](mailto:lynette.arnoldus@bigpond.com)

## Bulahdelah Post Office

Bank@Post personal and business banking needs, passports, travel and computer needs, phones, gifts and more. Bendigo bank.  
Mon-Fri 9am-5pm 4997 4283

**Your membership** helps support monthly dinners, community events, maintain the buildings and grounds. You can direct deposit \$12.50 per person to:

Wootton Community Network Inc.  
BSB: 633 108 Acct: 162518591

Reference: "WCN19" and your name

Please email when paid to notify the Treasurer [brushturkey@live.com.au](mailto:brushturkey@live.com.au)