

WOOTTON VALLEY NEWS

JUNE/JULY 2017 NO 108
DISTRIBUTION WOOTTON COOLONGOLOOK
BUNGWAHL BUNYAH BULAHDELAH

The Coastal Carpet Python (*Morelia spilota mcdowelli*)



It is one of the widest and most commonly distributed python species in Australia. Often mistaken for or confused with the Diamond Carpet, this species occurs further north. It is also known for the Diamond Python and the Coastal Python to interbreed, which is unheard of in most other reptile species. They can grow to 5 m. Females can lay up to 30 eggs and will care for and defend her clutch violently. It is believed they can live in excess of 100 years.



The photos show a snake trying to get into Robyn Smith's bathroom, presumably a good hunting ground for antechinus.

COMMUNITY CALENDAR

Sun 4 Jun	• Wootton Fire Brigade Shed: <i>training</i> , Squires Rd, 9am
Tue 6 Jun	• Great Lakes Soil Health Group Meeting/ farm tour: Wootton, 9am
Thu 8 Jun	• CWAG Strategic Plan Meeting: Coolongolook Hall, 6.30pm
Sat 10 Jun	• Brush Turkey Café: <i>Light supper night</i> 6pm supper \$10 pp
Sun 11 Jun	• Great Lakes Food Trail
Sat 24 Jun	• Wootton Hall: <i>Preventive Health Clinic</i> , podiatry, 9am—12 noon • Wootton Hall Dinner: Bring a plate, \$5 pp, from 6pm
Sat 1 Jul	• Wootton Community Network Meeting: Brush Turkey Café, 3pm
Sun 2 Jul	• Wootton Fire Brigade Shed: <i>training</i> , Squires Rd, 9am
Sat 8 Jul	• Brush Turkey Café: <i>Light supper night</i> 6pm supper \$10 pp
Sat 15 Jul	• Wootton facilities: community working bee, all day from 9am
Mon 17 Jul	• Sheep and Goat Health Workshop: Krumbach/Firefly, 9am
Sat 29 Jul	• Wootton Hall: <i>Preventive Health Clinic</i> , podiatry, 9am—12 noon • Brush Turkey Café: Xmas in July dinner, 7pm, \$20pp
Mon 31 Jul	• Turning Camphor Laurels into Figs Workshop: Wootton, 9am

Published by Wootton Community Network Inc
Editors: Caro Badcock 0408 415 420 email: caro_badcock@bigpond.com Sylvie Riviere 0408 861 051
Join our group on Facebook: Wootton Community or email brushturkey@live.com.au
Visit our website @ www.wootton.org.au

Wootton Community Network and Hall Committee News

- **Joint working bee** on Saturday 15th July all day from 9am.
Jobs: oil building, fix pavers, wash and repair timberwork, prune trees, remove weeds, clean tennis courts. Lunch supplied.
- **New fridge purchased** for Brush Turkey Café, working well
- **Stronger communities grant**—considering applying for works to the buildings and grounds
- **Wootton Valley News** is still going strong. Back page advert fee due 30/6/17
- **Dinners** June—\$5 bring-a-plate, Wootton Community Hall from 6 pm.
July—"Christmas in July" with a "Love Actually Theme", Brush Turkey Café, \$20 per head
- **April Food Trail**—the Brush Turkey Café participated in this event and the day proved a very successful fundraiser. Many thanks to all who helped.
- **June Food Trail**—the intention is to support future Trail days with the next event planned for 11th June. At the time of going to press we do not have enough help to have the Brush Turkey Café participate this time around. Please contact Pat if you can help (0422251508).
- **Night with a writer**—still in the planning stages.
- **Thanks** to everyone who has helped make April and May a real success.

Wootton Rural Fire Brigade

The AGM was held in May. There were no changes to the office bearers.

Cleaning and maintaining the trucks will be a lot easier now there is a new concrete apron in front of the shed. During the last 12 months there hasn't been many fires in the Wootton area. Most people are contacting Tuncurry Fire Control appropriately for burns so we are not being called out for false alarms – keep up the good work!

Thanks to all at the working bee.

Mike Badcock (Captain)

News from Bulahdelah



Bulahdelah Library has moved: After being threatened with closure, the Bulahdelah Chamber of Commerce and Tourism successfully negotiated with Council to move the library into the Rural Transaction Centre (RTC) at 63 Stroud St. Full library facilities are available. from 9am to 1pm Monday to Thursday and 9am to 3pm Friday. After hours returns can still be made in the drop box, now located at the RTC.



Bendigo Bank has arrived at the Post Office and is open for business. Pop in to open accounts and complete banking needs. Come and meet Bendigo Bank Representatives between 10am & 2pm during the Bendigo Bank Grand Opening on 8th June 2017 and enjoy the sausage sizzle.



Olivers Real Food to open on the corner of Stroud St and Bulahdelah Way from 6am to 9pm 7 days a week. Jobs are being advertised.



The Future of Wootton Community Facilities—UPDATE

The Crown Lands proposal has been submitted to Council for presentation on May 24th. The Council has approved the proposal and written a letter that has been sent to Crown Lands for their approval. Now we just wait and see.

Future of Wootton Community Facilities Working Group

Wootton Community Strategic Plan

Thanks to everyone who attended the last meeting. We have now finalised the plan. It will form part of our submission to Crown Lands when we apply to take over the management of the Wootton Community Trust and the associated facilities and will support us in any grant proposals. The plan is available on the Wootton website:

http://www.wootton.org.au/documents/wootton_strategic_plan_2017.pdf

Don't forget LOCAL Honey

Available at the Resource Centre/Brush Turkey Cafe during events and at the Hall in the library on Sundays from 9am to 12noon. Please bring the exact amount as no change is available. (\$18.50—\$11.00—\$7.50)



Judge: C Bagnall. Winners: R Johnson, K Bell, B Anderson, S Anderson



Judge: W Harvey. Winners: Z Ede, B Anderson, K Bell, M Schaefer



Judge: W Harvey. Winners: C Bagnall, Z Ede, B Anderson, R Johnson

A big thanks to our sponsors: Robb & Co, Taree Veterinary Hospital, McGraths Meats, Cobber Dog Food; our cattle suppliers; Rustic Reproductions for the chopping board trophies and to competitors and spectators for a successful dog trial with competitors from as far as Casino, south of Sydney, Dubbo, Scone and surrounding areas.

A great weekend was had by all. (Jo Ede)

The Inaugural Great Lakes Food Trail: April 2017— A great success!



The next Food Trail Sunday 11th June. For details visit our Facebook page.
<https://www.facebook.com/TheGreatLakesFoodTrailNSW>

Karuah Great Lakes Landcare (KGLL)

Great Lakes Soil Health Group: 6th June, Wootton, 9am-12.30pm

This meeting will feature a tour of a lime orchard and will cover orchard rejuvenation using soil amendments informed by soil testing. Get your hands dirty with rapid soil assessments.

Sheep and Goat Health Workshop 17th July (TBC), Krambach and Firefly, 9am-3.30pm
 Free workshop featuring District Vets Lyndell Stone and Kylie Greentree giving you the lowdown on preventive health basics and common health issues for small ruminants in coastal environments. Featuring a practical afternoon session handling sheep.

Turning Camphor Laurels Into Figs Workshop 31st July, Wootton, 9am-12.30pm
 Free workshop featuring Noxious Weeds Coordinator Terry Inkson and Bushcare Officer Isabelle Strachan, demonstrating how to destroy these noxious trees and rapidly replace them with beneficial and beautiful native figs.
 (Joël Dunn)



Make an offer
1989 XF Falcon Ute
 Dual fuel, exceptional motor,
 kept under cover.
 Phone Keith 0417657866



Renee and Paul Spiteri—new to Wootton

Our family has just settled full-time into Wattley Hill Rd from Cobargo on the far south coast to be closer to our older children. Paul was an Operations Manager for a large disability company in Bega for the last 7 years and managed 4 businesses within the organisation. I was the Home Finance Manager for Westpac on the Far South Coast for 5 years. We have 4 children, 3 adults and young Matthew, 11 years old. Yes it was a cold winter's night all those years ago! We also have a beautiful little grandson Theodore.



We have taken up the local Wootton/ Bulahdelah school bus run and have a few hot rods that we use for weddings, special events, graduations etc.; both of us are registered Justices of the Peace, so if anyone requires anything witnessed we are only too happy to help.

We are looking forward to being involved with the community and have organized an initial outing to the Civic Theatre, Newcastle for a comedy night on September 8 this year. Please join us for this exciting and fun first night out.

Facebook: Paul Spiteri; www.hot-rods-for-all.com; 49977149 or 0407 298 954.

Did you know . . .

That in the country your property number is the distance from the nearest main road in kilometres. For example if your number is 50 you are half a kilometre from the main road and if your number is 562 you are 5.62 km from the main road and if you are 1176 you are 11.76 km from the main road. This numbering system is used to help emergency services know how far away you are from the main road.

(If you know of any interesting differences between city and rural living let us know.)

The Waterbombers entertained and regaled Wootton



Go to on-line version to view bigger pics

Wild Dogs Update in the Wootton Area

There has been a lot of recent activity with 45 wild dogs taken in the area of Markwell/ Wootton from July last year to the end of April this year. The majority were female and approximately 30 were trapped. This has been done through close collaboration between land holders, National Parks, State Forests and Local Land Services (LLS), co-ordinated by Laurie Mullen from LLS.

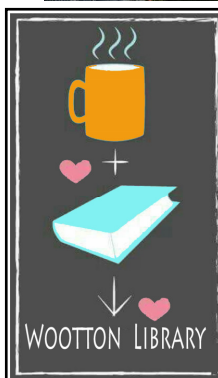
With the recent dog attacks on livestock we need to remain vigilant and notify Laurie on laurie.mullen@LLS.nsw.gov.au or 0407785007 of any sightings.

If you are interested in being trained to set baits or traps or require baits or traps please contact Laurie.



Grow Your Own Forest Workshop

A keen crowd attended our Grow Your Own Forest workshop at Wootton in April, as Craig Tate and Noel Jupp shared their passion for native trees and got everyone inspired to get growing. We visited three local tree planting projects at various stages of maturity, and had detailed practical discussions on planning, preparation, planting and problem solving.



Our metal book cupboard at the Wootton Hall has been given a name:

The "*Wootton Books on the Verandah*"!

Remember, if you can't visit us on **Sunday** between **10 and 12 noon** you can drop off your books or pick up from a small selection here. Come and meet Caro on the first, Marg on the second and Sylvie on the third Sunday of the month with casuals Robyn and Fran. We would love to hear from you if you would like to help us out.



Coolongolook / Wootton Action Group (CWAG)
Meeting June 8th at 6.30pm in Coolongolook Hall

We now have to review the Strategic Plan that includes the communities of Bunyah, Willina, Coolongolook and Wootton: Council website - "Community Strategic Plans"

Two council members will be attending to assist and advise us:

Tracey Farrant Council Community Engagement Officer;

Deb Tuckerman, recently appointed Economic Development and Tourism Manager.

Deb will talk about her new role and assistance available to our communities.

Over the past 4 years we have achieved –

- Fencing the Oval from the Highway to make it safer for children playing.
- A new toilet block with a new septic system as the previous block was never open due to an inadequate septic.
- Improved parking around the same area
- Picnic tables and bins near the playground for use by locals and visitors
- Two more picnic tables at Cedar Park Boat ramp area

Now is the time to have your say. How would you see the future development of our communities? What are our future priorities? Your ideas are most important.

So come along with your thoughts and have your say on where our next priorities should be.

Wootton Directory contains important local contacts . Please email Caro (ed) if you know of an important contact that we should include here. Thanks.



Wootton Community Network

President: Jim O'Connor 0412963161

Secretary: Fran O'Connor

Treasurer: Leanne Wright 4997 7201

Email: brushturkey@live.com.au

Wootton Community Hall Committee

Chair/Bookings: Caro Badcock
0408 415 420

Wootton Preventive Health Clinic

Osteopath, Jenna Norrie 0488 520 456
Podiatrist, Dot Williams 0406 287 694

Topi Topi Sustainable Farming Group

Chair: Sue Williams 0438 433 063

Wootton Rural Fire Brigade

Captain: Mike Badcock 0409 448 330
President: Adam Garnett 0428272629
Sen Dep Captain: Craig Tate
0431644953

Karuah Great Lakes Landcare

Joel.Dunn@glcr.org.au 0401932533

MidCoast Council: 6591 7222

Police

Senior Constable Trevor McLeod,
Sector Supervisor, Bulahdelah
4997 4204 0427233745

State Emergency Service 13 2500

Local Land Services (Wild dogs)
Wingham 6553 4233

State Forests Wauchope 6585 3744

National Parks & Wildlife

6591 0300

Tuncurry Fire Control: 6539 7700

Bulahdelah Waste Facility

opening hours

Tuesdays 1—5pm

Fridays 12—4pm

Sundays 10-2pm

DIRECTORY

Accommodation

Wootton Guest House

Too many visitors? 4 air conditioned bedrooms with en-suites and balconies. Reasonable rates. Contact Peter & Leanne
www.woottonguesthouse.com.au
4997 7201 0407 974 420

Earth Moving/Tractor Work

David Knezevic

Excavation, demolition, auger, rock hammer, grab bucket, tipper, truck hire
4777 7402 0410 441 428

Slashing and Excavating Services

Chris Nebauer

Free quotes, all areas, no job too small or too large. 70hp 4WD tractor, heavy duty slasher or mulcher - 4.5 ton excavator with auger, bobcat, tipper.
www.slashingservices.com 0416 128 502

Property and Livestock Services

Tony Mills

Rural and domestic handyman, maintenance, repairs and other projects. All fencing. Garden maintenance, mowing, landscaping. Shearing sheep & alpacas, plus other animal husbandry tasks. Free quotes. All areas. Years of experience and skills. 0427 332 155

Wootton Livestock Transport

Neil Ede

For any livestock handling needs. 30 years experience. 0407 787 920

Quality Silage Feed

Round bales of silage for sale \$88.00 (inc GST). No order too small or large. Delivery can be arranged.
Coolongolook. 0484 627 852

Plumber

Richard Green Plumbing

All plumbing, drainage, gas and LPG fitting, metal roofing (domestic, commercial, industrial)
Lic no. 53903C 6 559 1555 0418 618 583

Advertising for Wootton Valley News Directory
\$50 per four line ad space (6 issues)

Due 1st July

These businesses support this newsletter.

Please support them wherever possible.

New advertisers welcome, contact Leanne at
woottonguesthouse.com.au

Builder

Binna Burra Construction

Custom building and carpentry, servicing Smiths Lake, Pacific Palms, Wootton, Nabiac, Forster and surrounds.
www.binnaburraconstruction.com.au
Lic no. 299434C 0421 245 197

Real Estate

Great Lakes Realty

Comprehensive range of properties
info@greatlakesrealty.com.au 4997 8200

Edes Real Estate Pty Ltd

Stock and Station agent and property management www.edes.com.au
Brian Ede 49974566 0408 492 883

Rural Valley Realty, Coolongolook

Local agent for 25 yrs. Rural specialist.
Steve Devries 0458 448 019 4997 7214

Bulahdelah Post Office

Bank@Post personal and business.
Bendigo bank. Opal cards, Phones and gifts
Mon-Fri 9am-5pm and most Sat 9am-12noon
Ph/Fax 4997 4283

Health: Podiatrist

Dot Williams

Local podiatrist available for all foot care services: home-visits, weekly clinic
Bulahdelah, last Sat. month Wootton Hall.
Williams.dot@gmail.com 0406 287 694

RPS Enterprises Bus Services

Paul and Renee Spiteri

Charter bus available. Will be offering day tours, travel to entertainment venues, long lunches, anything within reason for a trip.
49977149 or 0407 298 954