

# WOOTTON VALLEY NEWS

FEB/MAR 2021 NO 130  
DISTRIBUTION WOOTTON COOLONGLOOK  
BUNGWAHL BUNYAH BULAHDELAH

## CRIMSON CHAT (*Epthianura tricolor*)

Chats follow rainfall to feed on the many small insects that breed, and they differ from most small birds by walking rather than hopping. The Crimson Chat is usually seen in inland areas, on or near the ground and is very striking. Both parents sit on the nest for two weeks to hatch between 2 to 5 pink, white and brown spotted eggs.

They move long distances and when the inland is dry there can be large irruptions of chats in areas near the coast, where they are usually uncommon.



## COMMUNITY CALENDAR

*If you book & can't make it please let us know so we can use the waiting list.  
Check [facebook](#) for other events TBA*

Sat 30 Jan	Wootton Community outdoor BBQ & Music, from 6pm Members \$25pp, non-members \$30pp, under 13's \$5 Limited numbers RSVP essential details page 2
Sat 13 Feb	• Wootton Hall: Food Swap 5pm RSVP Peter 0478 741 111
Sun 14 Feb	• Wootton Fire Brigade Shed: training, Squires Rd 8am
Fri 26 Feb	• Brush Turkey Café: "Meet the Artist" from 6pm <b>FREE EVENT</b>
Sat 13 Mar	• Wootton Hall: Food Swap 5pm RSVP Peter 0478 741 111
Sun 14 Mar	• Wootton Fire Brigade Shed: training, Squires Rd 8am
Sat 27 Mar	• Brush Turkey Café: Community dinner 6pm Members \$20pp, non-members \$25pp, under 13's \$5 Limited numbers RSVP essential details page 2
Sun 28 Mar	"Neighbour Day" see page 4

*People take many **photos** at community events. If you don't wish to be in Wootton newsletter photos, email [secwootton@gmail.com](mailto:secwootton@gmail.com) before publication closing date.*

The Wootton Valley News is usually delivered before the 1st day of each *second* month.

\* - details in the newsletter and online [www.wootton.org.au](http://www.wootton.org.au)

Published by Wootton Community Network Inc , created by Fred Fetherston & Sylvie Riviere  
Contact us by email [brushturkey@live.com.au](mailto:brushturkey@live.com.au)

Visit our website [wootton.org.au](http://wootton.org.au) and [Wootton Community](#) facebook public group

## Happy New Year to all the community.

We have been fortunate that Covid has not invaded our community but we all need to remain vigilant and comply with the Covid plans that are defined for our events.

Sunday December 13th saw the Cafe open for brunch thanks to the diligent efforts of *Dewi Sara and Peter Dunne* and their small team of volunteers.

The opening was very well attended and a chance for members of the community and some of the RFS volunteers to catch up.

There are changes in the WCN Committee as the planned departure of *Franz Flintrop* from the committee took place after the last meeting on the 9th January. We thank Franz for his service to the community and we welcome *Sue Williams* who has been voted in by the committee to take Franz's place. *Jo Lyons* has also been approved by the committee to be the Art Coordinator, with the aim of getting local artists into showing works at the cafe. *Patrick Riviere* plans to depart the committee at the completion of the February meeting on Saturday the 9th February. We urge any member of the community interested in joining the committee to come to that meeting for consideration.

As well as joining the committee, Sue Williams has also offered and been appointed as Social Events Organiser. At the meeting on the 9th she took on responsibility for a BBQ/Music event on Saturday evening the 30th January. Depending on the timing of the distribution of this Wootton Valley News there may still be time for you to come to this event. Please contact Sue Williams [sue@williamsonline.com.au](mailto:sue@williamsonline.com.au) if you would like to attend as RSVPs are necessary and numbers are limited.

You will also notice that membership of the Wootton Community Network is due for joining or renewal. You will find details for membership on page 3.

I would like to add thanks to *Fred Fetherston* and *Sylvie Arton* for their ongoing excellent work in producing the Wootton Valley News and thanks to those who assist with the distribution.

*Bill Buckland*

*President WCN*

## \*\*\*\*\* Community BBQ Saturday 30 January from 6pm \*\*\*\*\*

**Live Music** by Rueben Carr Music, Homemade Great Lakes Paddocks **beefburgers, veggie burgers** and **fresh buns** from the Bulahdelah Bakery. Homemade Wootton fresh **slaw and salads** followed by Serendipity **Choc Top Ice Cream**.

### **BYO drinks and Glassware.**

Social distancing will be required between tables at the Wootton Tennis Courts. Numbers are limited so please contact Sue Williams [sue@williamsonline.com.au](mailto:sue@williamsonline.com.au) to book and advise any dietary requirements as well as let us know how you want to pay.

Members \$25 pp, non-members \$30pp, children under 13 only \$5pp  
You can pay cash on the night or make payment online at Bendigo Bank BSB: 633000



Account: 162518591 (insert your name as reference)

**Looking forward to seeing you on the 30th of January.**

Ps you pay less for events by joining or renewing your WCN membership, see page 3 for details

*Sue*



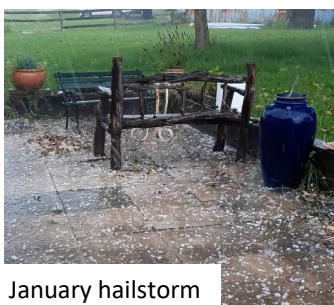
©Leanne and Patrick



## Wootton children Xmas party 2020



Successful Covid-free day at the Café



January hailstorm



First eggs from Chateau Riviere



A special Xmas for Meg and Steve welcoming first grandchild Henry



**Annual membership fee \$12.50 pp** - Payable at an event or by direct deposit to Wootton Community Network Inc.

Regional Australia Bank **BSB:** 932000 **Acct:** 500023558

Reference: "WCN21" and your name

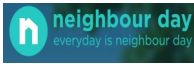
Please email when paid to notify the Treasurer [brushturkey@live.com.au](mailto:brushturkey@live.com.au)

Email [brushturkey@live.com.au](mailto:brushturkey@live.com.au) by 15th March





**Neighbour Day Sunday 28 March 2021** is to raise national awareness of the importance of social connection and neighbourly actions throughout the year. The 2021 theme is **'Every day is neighbour day'** building on the growing movement of people being neighbourly every single day.



<https://neighbourday.org/supporters/very-neighbourly-organisations/>

**WOOTTON RURAL FIRE BRIGADE** [www.facebook.com/woottonrfs/](http://www.facebook.com/woottonrfs/)

**Captain: Adam Garnett    0428 272 629**

Permit Officer: Michael Coventry 4997 7155 or 0407 458 167



**Even if it's been raining  
you must have a permit  
before lighting a fire.**



**Big Picture Soil Health Field Day**  
**Friday 19th February, Bulahdelah, 9am-1pm**

Join local regenerative agriculture aficionado and Chief Worm Wrangler Lee Fieldhouse of Island Biologicals for an in-depth exploration of the many dimensions of soil health, and outside-the-square approaches to soil care.

Get to know your soil and its ecology – how to efficiently assess your soil's health and performance and monitor changes over time, and principles for low-input, high impact soil improvement. RSVP essential to [joel.kgl.landcare@gmail.com](mailto:joel.kgl.landcare@gmail.com)

For more news, events and videos: [www.facebook.com/karuahgreatlakeslandcare/](https://www.facebook.com/karuahgreatlakeslandcare/)



## ??What goes in what bin??

<https://midcoastwaste.com.au/what-goes-where/>



**URGENT—APPLY NOW**

**Local Wootton positions vacant.....no \$\$ but great satisfaction**

Can you help with community activities and events?

Already this year several new volunteers have snapped up exciting roles with the Wootton Community Network. It's ***your chance now*** to share in upcoming vacancies including **Newsletter production, Newsletter distribution** and **Committee members**. Sylvie has co-produced the newsletter for 5 years and is ready to spend more time with Patrick as he takes a well earned rest from the committee.

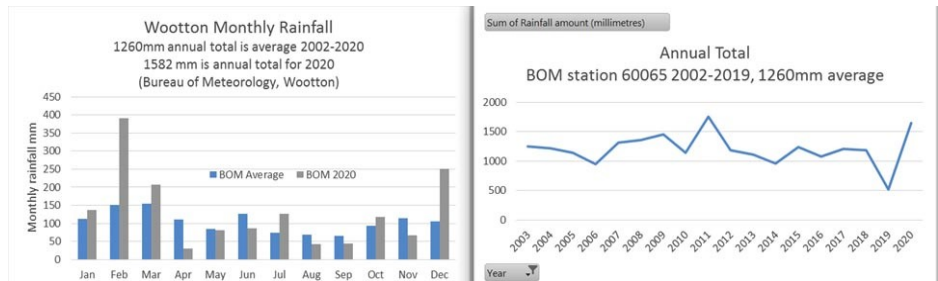
**No limits on age or youth and new ideas and skills welcome.**

To find out more and apply, contact Sylvie or Fred (newsletter) or a committee member, come along and chat at an event or phone/email.

**Dungog Commoners Landcare** have developed a great **Lantana hook** [read more.](#)



**How wet was Wootton in 2020?**



Even with a total of 1582mm close to 2011's result, there were big gaps especially in April and Spring. Fred found raw data at [www.bom.gov.au/climate/data/stations/](http://www.bom.gov.au/climate/data/stations/)





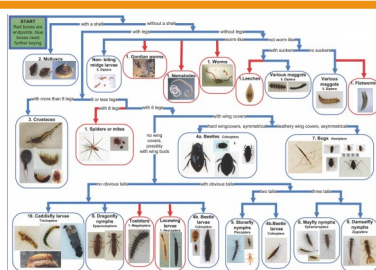
NPWS and volunteers from the Australian Association of Bush Regenerators, members of four-wheel-drive clubs and community members, supported by Hunter Local Land Services (HLLS), cleared roughly 35,000 square metres of “Scotch broom” weeds.

Other groups close to Wootton include Blueys Beach Dune Care Group [landcare.nsw.gov.au/groups/blueys-beach-dune-care/](http://landcare.nsw.gov.au/groups/blueys-beach-dune-care/) and Manning Coastcare [www.midcoast2tops.org.au/manning-coastcare](http://www.midcoast2tops.org.au/manning-coastcare)



### What's living in your dams and creeks?

Search online for “waterbug survey kits” and choose one that helps you find out.



The Atlas of Living Australia (ALA) provides free, online access to information and is a great way to learn more and share what you know about the biodiversity in your area. [www.ala.org.au/](http://www.ala.org.au/)

Going to the “explore your area” page is a really quick way to find what's been recorded, and you can even find out if something that people have collected at Wootton is in a museum somewhere!

[https://biocache.ala.org.au/explore/your-area#-32.3186|152.2935|12|ALL\\_SPECIES](https://biocache.ala.org.au/explore/your-area#-32.3186|152.2935|12|ALL_SPECIES)

To report something you have found or for help to identify it use the **inaturalist** page

<https://inaturalist.ala.org.au/>



iNaturalistAU



Morning Glory

### Weeds of the Months

Weeds are easy to spot when they are flowering. Around Wootton now you can find purple **Morning Glory** and yellow **Arsenic Bush**. They spread and take over farms and bush areas if left untreated. “Arsenic Bush” looks like the indigenous “Rainforest Senna” but has more pointed leaves.



Senna septemtrionalis

[www.midcoast.nsw.gov.au/Environment/Trees-Plants/Weed-Management](http://www.midcoast.nsw.gov.au/Environment/Trees-Plants/Weed-Management)

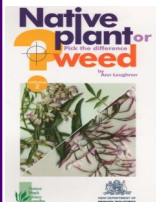
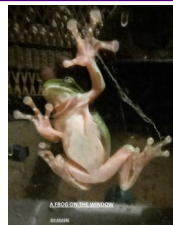




### Want to find out what belongs on your land?

Cane toads have been found at Harrington, Medowie, Wallsend, Warners Bay, Swansea and Muswellbrook. Come along to this workshop

<https://www.nsw.gov.au/regions/hunter/events/h-events/cane-toad-and-native-frog-workshop-and-spotlight-tour-midcoast>



### Free Landholder Training on pest plant identification, control and management

Hunter LLS have tentatively set dates for Manning/Taree - 23rd, 24th & 25th of February 2021.

[hunterlls.wufoo.com/forms/landholder-weeds-training-expressions-of-interest](https://hunterlls.wufoo.com/forms/landholder-weeds-training-expressions-of-interest)

### Do you need a Justice of the Peace (JP)?

Long term Woottonite Warren Richardson has been a JP for over 50 years.

You can find a full list of JPs online by using the JP Public Register and searching by postcode or by suburb.

[www.jp.nsw.gov.au/Pages/justices-of-the-peace/jp-public-register.aspx](http://www.jp.nsw.gov.au/Pages/justices-of-the-peace/jp-public-register.aspx)



**Wootton Directory** contains important local contacts. **Always dial 000 for Emergency.**



#### Wootton Community Network

President: Bill Buckland

Secretary: Kate Hosey 0402 776 376

Treasurer: Leanne Wright 4997 7201

Email: [brushturkey@live.com.au](mailto:brushturkey@live.com.au)

#### Bookings—all facilities

*Celebrating something special? Running a Course or a Market?*

*Getting people together?*

Kate Hosey 0402 776 376

#### Wootton Rural Fire Brigade

Captain: Adam Garnett 0428272629

Sen Dep Capt: Bernard Carran 0409684177

[www.facebook.com/woottonrfs](https://www.facebook.com/woottonrfs)

#### Midcoast Fire Control

Burnoff notifications 1300 643 262  
(24hour prior notice)

#### Karuah Great Lakes Landcare

[joel.kgl.landcare@gmail.com](mailto:joel.kgl.landcare@gmail.com)

Joël Dunn 0401932533

#### Wootton - Topi Topi Sustainable Farming Group

Fred Fetherston 0427 461 101

**MidCoast Council:** 6591 7222

**State Forests** Wauchope 6585 3744

**Police:** Sector Supervisor,  
Senior Constable Trevor McLeod,  
**New no.—4940 7470**, 0438 140 370  
[mcle1tre@police.nsw.gov.au](mailto:mcle1tre@police.nsw.gov.au)

**State Emergency Service** 132 500

#### Local Land Services

*Wild dogs* Laurie Mullen 0407 785 007

*Rural Resilience Group*

Peter Brown 0437 671 459

**National Parks & Wildlife** 6591 0300

**Fawna Wildlife Rescue** 6581 4141

**Electricity Essential Energy** 13 20 80

#### Bulahdelah Waste Facility

opening hours

Tuesdays 1 - 5pm, Fridays 12 - 4pm

Sundays 10-2pm

# DIRECTORY

## Accommodation

### **Wootton Guest House**

Too many visitors? 4 air conditioned bedrooms with en-suites and balconies. Reasonable rates. Contact Peter & Leanne

[www.woottonguesthouse.com.au](http://www.woottonguesthouse.com.au)

4997 7201

0407 974 420

## Real Estate & Legal

### **Ede's Real Estate Pty Ltd** since 1956

For all your Real Estate needs in Wootton, Bulahdelah and surrounding Areas  
*Agent/Agency Award Winners 2018,2019&2020*  
Your LOCAL AGENT 49974566 0408492883  
Remember Choosing Ede's is choosing success  
[edes@edes.com.au](mailto:edes@edes.com.au) [www.edes.com.au](http://www.edes.com.au)

### **Palms Conveyancing & Property Law**

For all your conveyancing needs – Purchase, Sales, family Transfers, Sub-divisions or boundary adjustments, we can help  
Call Brenda 6554 0404

[brenda@palmsconveyancing.com.au](mailto:brenda@palmsconveyancing.com.au)

## Wootton Transport

### **Neil Ede, Wootton Livestock Transport**

For any livestock handling needs. 30 years experience. 0407 787 920

### **RPS Enterprises - "Bulahdelah Buses"**

You require the transport we do the driving. Luxury Air conditioned seat belted buses available for wedding guest transport, winery trips, concerts, sporting events. Call Paul and Renee Spiteri to discuss your transport needs.  
4997 7149 or 0407 298 954

## Building - Plumbing

### **Tim McDonnell** Lic no. 14660

Plumbing, Drawing, Roofing Guttering  
Water tanks, Gas fitting  
Wootton & all areas – 0418 682 199

### **Binna Burra construction** Lic no.299434C

Custom building and carpentry, servicing Smiths Lake, Pacific Palms, Wootton, Nabriac, Forster and surrounds. 0421245197

[www.Binnaburraconstruction.com.au](http://www.Binnaburraconstruction.com.au)

**Advertising for Wootton Valley News Directory**  
**\$50 per four lines, \$5 per extra line (6 issues)**

**Renewals from 1st July**

*These businesses support this newsletter.*

*Please support them wherever possible.*

**New advertisers welcome, contact Leanne at**  
**[woottonguesthouse.com.au](http://woottonguesthouse.com.au)**

## Pest Control

### **Bugs Or Us Pest Control**

General pest and termite control.  
Specialising in termite detection with our termite detection dog.  
Pre-purchase inspections – 0490 454 644

## Health and Beauty

### **Liarne's Hair and Beauty**

A private home salon.  
All ladies and men's hairdressing.  
Waxing, relaxation facials, lash and brow tinting. Air conditioning, eftpos facilities.  
Tuesday to Friday 9am to 5pm 0412 833 700

### **Dr Lynette Arnoldus-Lewis**

Psychologist–Nabiac, Approved DVA Provider–  
Domestic violence, Marriage counselling,  
Grief, Carers support, Family Issues .....  
65541535 0429 190 142  
[lynette.arnoldus@bigpond.com](mailto:lynette.arnoldus@bigpond.com)

### **Yoga Classes with Naomi Patton**

Wootton Hall. Mondays 9-10am we unwind with a gentle yin/restorative class, suitable for everyone, even those nursing injuries. Wednesdays from 9.15-10.45am it's an active Hatha class where we get moving. All welcome. 0414 387 008

## Bulahdelah Post Office

Bank@Post personal and business banking needs, passports, travel and computer needs, phones, gifts and more. Bendigo bank.

**RENEW YOUR  
MEMBERSHIP**  
DETAILS PAGE 3