

WOOTTON VALLEY NEWS

FEBRUARY/MARCH 2016 NO 100

DISTRIBUTION WOOTTON COOLONGLOOK

BUNGWAHL BUNYAH BULAHDELAH

Red Triangle Slug (*Triboniophorus graeffe*)

With the distinctive red triangle on its back and growing up to 14 cm long, this native land slug is Australia's largest and can be easily spotted in urban areas, forests and woodlands and heath along the east coast of New South Wales and Queensland. (This one is a resident of Wootton.) The red triangle contains the breathing pore. The slug usually grazes on microscopic algae growing on the surface of smooth-barked eucalypt trees, leaving behind scalloped tracks as it goes. If given the chance, it will also remove bathroom mould. (Native slugs can be differentiated from introduced slugs because they have only one pair of tentacles, while introduced snails and slugs have two pairs. Also, the saddle-shaped mantle seen in introduced snails is reduced or absent in native snails and slugs.)



COMMUNITY CALENDAR

| | |
|--------------|---|
| Sat 30 Jan | <ul style="list-style-type: none">• Opening of Wootton Preventive Health Clinic• Australia Day Dinner, <i>Not only Lamb and Lamingtons, but also ...</i> Brush Turkey Café, 7 pm |
| Sun 7 Feb | Wootton Fire Brigade training at the Fire Shed, 9 am |
| Sat 13 Feb | Food swap 5 pm at the Wootton Community Centre grounds Light supper & movie night, Brush Turkey Café, 6 pm supper 7 pm movie \$10 |
| Mon 15 Feb | Topi Topi Sustainable Farming Group field day at Surilox Alpaca Stud |
| Sat 27 Feb | Valentine's Day dinner - <i>Black Tie & Pearls</i> , Brush Turkey Café, 7 pm |
| Sun 6 March | Wootton Fire Brigade training at the Fire Shed, 9 am |
| Sat 12 March | Food swap 5 pm at the Wootton Community Centre grounds Light supper & movie night, Brush Turkey Café, 6 pm supper 7 pm movie \$10 |
| Mon 14 March | Topi Topi Sustainable Farming Group Edible Garden Tour, Charlotte Bay |
| Sat 26 March | Community dinner at the Hall, bring a plate to share, 6 pm, \$5 |

Published by Wootton Community Network Inc

Editors: Carole Robinson 0428 009 952 email: ithicawootton@bigpond.com Caro Badcock 4997 7337

Join our group on Facebook: Wootton Community or email brushturkey@live.com.au

Visit our website @ www.wootton.org.au

Wootton Community Network News

Thanks to Richard, Caro, Fran, Jim, Patrick, Gwynne, Judy, Leanne, Pam, Danny, Julie and Pat who participated in our bi-monthly meeting in January. Thanks also to Leanne for her efforts as treasurer. The accounts are still healthy despite some large purchases recently to improve our facilities.

Membership for the Wootton Community Network is due now - \$12.50 for 12 months.

The Network is an independent incorporated group and our activities are open to everyone. A lot of our time is spent running the Brush Turkey Café as a facility for Wootton residents and their many friends from further afield. We fund publication of the Wootton Valley News, hold monthly dinners, movie nights and some local get-togethers such as "meet the artist" evenings and landcare events, plus operating as a cafe on Sundays. The network also liaises with the Hall committee and is currently working with them over the Crown Lands issue which may affect the future of the old School Hall and the associated Crown Land on which it and the Brush Turkey Café stand.

Because of the Network's large independent membership, it is able to make representation to local and state authorities concerning local issues directly affecting residents, such as roads and bridges. So your membership is making a valuable contribution to our local community.

Membership helps fund insurance cover for attendance at events and when volunteering. It also entitles you to discounted coffee at the café and your name goes in to the Members' Draw at our monthly dinners when you can win a voucher for the café, dinner or movie nights.

This **Newsletter**, our 100th edition, is being well received; new resident, Gwynne, commented that, "as a newby, it was really informative and helpful." Thanks to the Rural Transaction Centre in Bulahdelah for printing it at an affordable price and saving us many hours of printing time. Local residents have been delivering the newsletter over the past year and many thanks to all of them – Mike and Caro, Leanne, Jim and Fran, Judy and Pat. We are still looking for someone to deliver to Herivals/Ferny Creek Roads. If someone who lives on one of those roads would like to deliver, could you please call Pat on 0422 251 508. It's only 20 newsletters and involves driving along those roads and putting in mailboxes.

Cover over the pizza oven: Many thanks, especially to Dave Elliot, with Jim and some help from Craig, for constructing a waterproof cover over the pizza oven. We are hoping it will get more use in the future, now that we can keep it dry.

Thanks to Judy for looking after the garden and fixing the retaining wall along the path to the hall.

The **January** edition of the NSW Season Conditions Summary is available from the NSW DPI website at: www.dpi.nsw.gov.au/agriculture/drought-bushfire-and-emergencies/seasonal-conditions/regional-seasonal-conditions-reports/seasonal-conditions/jan-2016

Congratulations and many thanks to the team that opened the Café on the first Sunday of 2016. The year started with a bang, probably *the* busiest Sunday we have ever had. Many thanks to Robyn and Brian, our stalwart professionals from Wang Wauk, Judy, our Lemon Myrtle cheesecake and garden expert, and our newest helper in the cafe, Gwynne - all turned in a phenomenal day's effort. Gwynne was overheard to say, (when asked if it wasn't a bit too busy on her first day) "I'm having a ball!" And don't let's forget the dynamic duo, Patrick and Sylvie, who turn up at the end of the day, whenever they can, to make sure it's all tidied up properly.

The Brush Turkey Café is usually open from 10.00 am to 4.00 pm every Sunday, we serve breakfast, lunch, homemade cakes, coffee and tea.

Note: Café will open at 12 noon on Feb 14 only

We sorely need more hands though; if you can spare a few hours or a day every month or so please contact Jim on 49977323.

New Woottonite Gwynne Jones' work is now on show at the Brush Turkey Café.



Wootton Winners

The Bulahdelah Show held in November was a busy time – especially for a few Wootton folk. There were 3 first time entries from Jim and Fran O'Connor and Patrick Riviere and the "old timers" in the form of Warren and Julie Richardson and Judy Hammond. Between the five there were 28 entries. Every year Warren wins First Prize for his bread and he didn't disappoint this year. Jim gained a Second and Third for his bread, Fran had a Second for flowers, Julie had a First Prize for her savoury bread and Judy won several prizes for her produce, baking and sewing, including First Prize and Section Champion for one of her quilts. Between the 5, 14 prizes were won out of 28 entries. Congratulations to all. Once the Show Bug bites it becomes very contagious and it is a lot of fun trying your luck with the judges.

Topi Topi Sustainable Farming Group

Our most recent event was *Garlic in the Garden* held at Bungwahl on 16 November. Thank you to host Robyn Hardy for showing us how to grow different garlics locally in the home garden and for sharing her recipe for Labna. We held our Christmas get-together at the Salty Dog where all enjoyed a relaxed seafood lunch and the chance to chat. 1916 will be off to a good start with the following events:

- Monday **15 February** from 10-12 noon **Surilox Alpaca Stud** at Coolongolook hosted by Karine Raiz and Peter Seldon. More information about the stud can be found at www.surilox.com
- Monday **14 March** from 10-12 noon **Edible Garden Tour** at Garden-to-Table Permaculture at Charlotte Bay hosted by Megan Cooke. You will be able to register directly online for just \$10 (normally \$25) at www.gardentotable.com.au

Wootton Community Hall

The hall committee met in early January. An exciting range of events has been scheduled for the year with the first event being the usual bring-a-plate-to-share dinner in the hall on March 26 from 6 pm and will include a short AGM where we will provide a review of 2015, what is planned for 2016, the current financial status and introduce you to your new committee members. June 25 will see us holding a bush dance for the first time. Save the date in your diaries and if anyone is interested in helping to organise please contact Megan on 0418420608. We are also planning to hold another games night sometime in the first half of the year. Don't forget, the monthly Food Swaps will continue on the second Saturday of the month from 5 pm before the supper and movie nights.

After many years Larn is standing down from the hall committee and the Treasurer's position at the AGM in March and I am continuing to act in the Chair's role until a replacement can be found. I would like to thank Larn for all the support she has given the committee and me in particular including her vital contributions to ensure the hall did not fall into disuse. If you are interested in helping in the library, assisting with the community dinners in the hall or the food swaps or providing any other support to keep the hall as an integral part of the Wootton community we would love to hear from you. Please contact Caro on 0408415420.

What a fantastic Christmas Party we had in 2015.

Four gazebos set up in the courtyard provided plenty of shade for over 50 people who turned up on a hot afternoon to meet up with old friends and to make new ones. This year we even saw two people bring their dogs to join in the fun!

After the flurry of activity to get all the decorations, gazebos, tables and chairs set up there was the raffle to be organised. Geoff and Julie enthusiastically encouraged us all to purchase tickets where prizes included a basket full of goodies and a huge fruit platter. Santa arrived on the big red fire truck and made the day for the children who were treated to ice creams and packets of chips. Santa then proved very popular with the adults, in particular our Korean community members and their friends. Everyone brought a plate and guests commented on the variety of wonderful dishes on offer, including a huge ice-cream Christmas pudding - you had to be quick to get a piece!

This special day was jointly organised and funded by the Wootton Community Network, the Wootton Community Hall Committee and the Wootton Fire Brigade. However events like this can't succeed without a lot of help from the community. There were plenty of people who helped set up the gazebos, put out the



tables and chairs, found extras when demand exceeded supply, blew up and hung the balloons and other Christmas decorations and at the end, cleaned up. Our thanks for all their help. Thanks also to Julie for organising the first prize in the raffle and to Leanne for organising and purchasing the chicken, the fruit platter for the raffle and the ice cream and chips for the kids.

Crown Land Situation

As there are quite a number of residents recently moved into the Wootton area I thought the new year would be a good opportunity to provide a potted history and an update of the Crown Land situation.

The Brush Turkey Café (part of the Wootton Community Resource Centre), the Wootton hall, tennis courts and principal's cottage are on a lot of Crown land that is the Wootton Community Reserve Trust managed by the Great Lakes Council. The remainder of the land at the back of the hall and tennis courts through to the fire shed consists of two lots of Crown land reserves, both of which have two Aboriginal land right claims on them.

The hall committee is a *Local Government Act* section 355 committee of volunteers assigned by the Council to manage the hall part of the trust on their behalf. The Wootton Community Network leases part of the land from the Trust (i.e. the Council) to run the Resource Centre including the Brush Turkey Café and the Council leases the principal's cottage through a real estate agent.

In 2014 the Council engaged contractors to undertake what they call a Public Halls Service Level Review. Unfortunately when assessing the use of the Wootton hall by the community the review did not take into account the complementary use of the Resource Centre and hence ranked the Wootton hall poorly. From the results of this review the Council decided to hand responsibility "for the management and maintenance" of the Wootton facilities including the hall, the principal's residence, the tennis courts and the Resource centre back to the landowner, i.e the Crown. They strongly worded the decision to include the belief that the halls would not be "lost to the community", they would just run under community-based committees reporting to the Crown. While, in principle, this belief should be feasible, in practice, it is more difficult. During this time period, the Crown released its own review of management of Crown Lands with a view to removing duplication and red tape by allowing councils to manage Crown reserves under the local government legislation.

So, where does that leave us? Last year the Hall Committee set up a Crown Lands Working Group with a view to investigate the feasibility of setting up a community-based trust to take over responsibility of the current Wootton Community Reserve Trust. The group consists of members of the Wootton Community Hall committee and the Wootton Community Network. Having obtained hall financial data from the Council we believe this is just feasible if we are able obtain the rent from the principal's cottage. The group met in January and plans to provide the various community groups with a proposal in early February for their approval before sending to Council mid-February with an invite to present to them at the Brush Turkey Café in late February or early March.

Caro Badcock (acting Chair Wootton Hall Committee on behalf of Crown Land Working Group)

Wootton Fire Brigade

Welcome and thanks to four community members who have volunteered to become fire-fighters.

Preventive Health Clinic - coming to Wootton

On **Saturday 30 January** 2016 a Preventive Health Clinic will open at the Wootton Hall for a 3 month trial to determine the viability of delivering local health services within our community.

Preventive healthcare is about early intervention to reduce the risk of injuries and illnesses worsening. The launch of the Wootton Preventive Health Clinic will commence with Osteopathy Services provided by Dr Jenna Norrie, a fully registered and qualified Osteopath. Osteopathic treatment is suitable for all stages and phases of life to address any musculoskeletal issue or complaint. Whilst Dr Norrie helps those in pain, she is also committed to preventative care, addressing any biomechanical compromise before they become a permanent problem. Common ailments that Osteopathy can help with, but are not limited to include, acute and chronic pain including back, neck and shoulder pain, headaches, bursitis and other musculoskeletal inflammation, joint sprains and strains, joint and muscle/arthritis pain, postural improvements, support during pregnancy and overall improvement of body function.

We are very fortunate that Dr Norrie has recently moved to the Great Lakes Area and is offering to divide her practice times between Newcastle, Forster and Wootton. Dr Norrie is also trained and qualified to work with animals, particularly horses and dogs, although other species as well. The Wootton Osteopathy Clinic will have a provider number so patients can claim some of their treatment costs with their private health fund, and in some circumstances Medicare. For more information about Osteopathy and how this treatment can help you, please visit Dr Norrie's website at www.forsterosteopathy.com and or call for an appointment on 0488 520 456.

Wootton Dog Trials

A must for your diary!! Weekend of 2-3 April 2016. This is an opportunity to watch dogs and their handlers who come from all over NSW (eg Dubbo, Casino, Grafton, Byalong Valley) to compete in the Wootton trials as part of the Working Stock Dog Association annual point score circuit.

Dog trials provide a competitive way to foster and encourage the use and training of herding dogs in the cattle industry. Spectators cannot help but be impressed by the skills and agility of these wonderful dogs and the patience of their handlers who are always happy to talk about what is important in the training and working of a herding dog.

The canteen ladies make terrific fillet steak sandwiches and coffee so stay for lunch. Free entry, on-site parking, 105 Wattley Hill Road, Saturday 7am-4pm, Sunday 7am-11am.

For more information call Zac Ede 0428293024 or Neil Ede 0407787920

Wild dogs

There have been many recent sightings of large packs of dogs, around 10 to 20 in the Wootton area!

Some local farmers have commenced a baiting program. If you decide to do so too, contact Local Land Services at Wingham on 6553 4233. They will put you through to the appropriate person who will provide you with training if you don't already have a licence and will provide the baits as required.

If undertaking a program you will have to notify your neighbours. This means that if you back onto State Forest or the National Park, you will need to notify them as well. The State Forest office is at Wauchope on 6585 3744 and the National Parks number is 6591 0300.

Wootton Directory

Many readers have recently commented on the value of being able to find important local contacts in this Newsletter so we have decided to maintain a compilation on this page. Please ring or email Carole (ed) if you know of an important contact that we should include here. Thanks.



Wootton Community Network

President: Jim O'Connor 0412963161
Secretary: Fran O'Connor
Treasurer: Leanne Wright 4997 7201
Email: brushsturkey@live.com.au

Wootton Community Hall Committee

Chair/Bookings: Caro Badcock
0408415420
Secretary/Treasurer: Larn Garnett
0427272629

Topi Topi Sustainable Farming Group

Convenor: Sue Williams 0438433063

Wootton Rural Fire Brigade

Captain: Mike Badcock 49977337
President: Adam Garnett 0428272629
Sen Dep Captain: Craig Tate
0431644953

Tuncurry Fire Control: 6539 7700

Great Lakes Council: 6591 7222

Police

Senior Constable Trevor McLeod,
Sector Supervisor, Bulahdelah
4997 4204 0427233745

SES 13 2500

Local Land Services

Wingham 6553 4233

State Forests

Wauchope 6585 3744

National Parks & Wildlife

6591 0300

Bulahdelah Waste Facility

opening hours

Tuesdays 1—5pm

Fridays 12—4pm

Sundays 10-2pm

DIRECTORY

Accommodation

Wootton Guest House

Too many visitors? 4 air conditioned bedrooms with en-suites and balconies. Reasonable rates. Contact Peter & Leanne www.woottonguesthouse.com.au
49977201 0407 974 420

Bulahdelah Post Office

Bank@Post personal and business. HCCU banking. Phones and gifts Mon-Fri 9am-5pm and most Sat 9am-12noon
Ph/Fax 49974283

Earth Moving/Tractor Work

David Knezevic

Excavation, demolition, auger, rock hammer, grab bucket, tipper, truck hire
47777402 0410 441 428

Slashing and Excavating Services

Free quotes, all areas, no job too small or too large. 70hp 4WD tractor, heavy duty slasher or mulcher - 4.5 ton excavator with auger, bobcat, tipper. Chris Nebauer
www.slashingandexcavating.com **0416 128 502**

Plumber

Richard Green Plumbing All plumbing, drainage, gas and LPG fitting, metal roofing (domestic, commercial, industrial) Lic no. 53903C
65591555 0418 618 583

Real Estate

Edes Real Estate Pty Ltd

Stock and Station agent and property management www.edes.com.au
Call Brian Ede
49974566 49977180(A/H) 0408 492 883

Great Lakes Realty

Comprehensive range of properties
info@greatlakesrealty.com.au **49978200**

Rural Valley Realty, Coolongolook

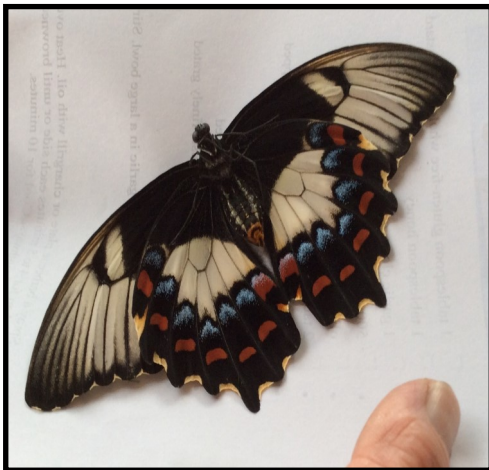
Local agent for 25 yrs. Rural specialist.
Steve Devries **0458 448 019 4997 7214**

Quality Silage Feed

Round bales of silage for sale \$88.00 (inc GST). No order too small or large. Delivery can be arranged. Coolongolook. **0484 627 852**

Wootton Livestock Transport

For any livestock handling needs. 30 years experience.
Neil Ede **0407 787 920**



Found in Wootton. We think it is the *Papilio aegeus*, the Orchard Swallowtail Butterfly.

**Advertising for
Wootton Valley News Directory
\$50**

per four line ad space (6 issues)

Due 1st July annually

*These businesses support this
newsletter. Please support them
wherever possible.*

**New advertisers welcome,
contact Leanne at
woottonguesthouse.com.au**