

WOOTTON VALLEY NEWS

FEBRUARY - MARCH 2010 NO 64

DISTRIBUTION 500 WOOTTON COOLONGLOOK
BUNGWAHL BUNYAH BULAHDELAH

Latham's Snipe *Gallinago hardwickii*

Latham's Snipe is the largest snipe in Australia, with mainly brown, plumage. It's distinctive feature is it's long straight bill. It's wings are short and pointed and the tail is long. The upper body is boldly patterned with black, brown and white. Their eyes are set high to give a wide field of vision. Snipe are very shy and wary and burst from cover when disturbed. This is often the first indication that they are around, as they are usually well-camouflaged when still. It feeds by thrusting their long bill into mud with an up and down 'sewing machine' action in soft mudflats or shallow water. They roost in the day and feed at night, early morning or evening. They are omnivorous, eating seeds and plant material, worms, spiders and insects, some molluscs, isopods and centipedes. They favour wet treeless tussocky grassland. It breeds in Japan and on the East Asian mainland. The males have spectacular display flights, rising in the air and then diving to the ground, in courtship or to defend territory. It is a migratory wader, moving to Australia in our warmer months. Birds may fly directly between Japan and Australia, stopping at a few staging areas. They leave their breeding areas from August to November, arriving in Australia mainly in September. They leave the south-east by the end of February, moving northwards along the coast. Most have left Queensland by mid-April.



Photo taken in Wootton recently

COMMUNITY CALENDAR

Saturday 30th January	Community Dinner "Australian" theme Brush Turkey Cafe 7pm
Monday 8th February	Wootton Way Clean Up 9am (meet at café)
Wednesday 10th February	GL Catchment Management Group Wootton Hall
Friday 19th February	Wootton Sustainable Farming Group formation
Saturday 13th February	Supper & Movie Night 7pm Brush Turkey Cafe
Saturday 20th February	Hunter Valley Bus Tour departs 7:30am
Sunday 21st February	Wootton Fire Brigade meeting Squires Rd 9am
Saturday 27th February	Community Dinner "Valentines Day" Brush Turkey Cafe 7pm
Sunday 21st March	Wootton Fire Brigade meeting Squires Rd 9am
Saturday 27th March	Community Dinner "Bring a plate to share" Brush Turkey Cafe 7pm

Published by Wootton Community Network Inc

Editors Bronwyn Little 49977185 and Pat Tate 49977292

Phone: 49977296 brushturkey@live.com.au Visit our website @ www.wootton.org.au

Wootton Community Network Meetings are held on the first Thursday of every month, 7pm , at the Brush Turkey Café. Next meeting dates are 4th February and 4th March. ANYONE AND EVERYONE is welcome to attend these meetings.

New members are always welcome.

Committee for 2009/2010 President: Jim O'Connor, Secretary: Bron Little, Acting Treasurer: Fran O'Connor. Any help with the running of the Wootton Community Network and Brush Turkey Café would be welcomed.

Bus Trip to Hunter Valley Vineyards 20th February.

See details next page. Contact Bron Little on 49977185.

Café News After a 2 week break the café is open again every Sunday 9am-4pm serving breakfast. If anyone has excess produce please drop it off at the café. If you can spare a Sunday every 4-6 weeks and would like to meet some really nice people, come along, volunteer and support this unique, worthwhile community venture. All profits are put back into the community.

Ladies Night will recommence on Friday February 19th 5pm.

Call Fran on 49977323 for more details.

Next Supper & Movie Night will be held on the 12th February 2010, 7pm at the Brush Turkey Café. See details next page.

Xmas Dinner was an enjoyable celebration to mark the end of 2009. Everyone brought delicious food to share which was eaten with gusto. The musicians were greatly appreciated with everyone sitting outside on a beautiful starry night.



Thanks to the Slickville Pickers for their great music.

Community Dinners for 2010

Our first community dinner will be an Australian theme and will be held on **Saturday 30th January 2010**. Come along ready to tell a short poem, joke or story to amuse the crowd. Tasty home cooked Australian fare will be the go. So come along and enjoy yourself. Make the night more fun by wearing a hat. Book on 49977296 or 49977292.

February's Community Dinner will be "Valentines Day" theme and **March** will be "Bring a plate to share".

Art at the Brush Turkey Café

Our new artist for the months of January and February is Helen Cooper. She is inspired by the environment and the exploration of colour, light, beauty, emotion and the changing colour of the seasons. Any artists wanting to exhibit please leave your name at the café or contact Pam Dunne on 49977156.



Supper and Movie Night Saturday 13th February 7pm "Taking Woodstock"

Based on the memoirs of Elliot Tiber, the comedy stars Demetri Martin as Elliot, who inadvertently played a role in making 1969's Woodstock Music and Arts Festival into the famed happening it was.
\$10 per person. Dependant on weather, movie screening will be outdoors.

Hunter Valley Bus Trip Saturday 20th February

Leaving Wootton 7:30am returning 6pm
Hunter Valley Gardens (optional-entry \$16.50)
cheese and chocolate factory

McGuigans winery and
Tamburlaine & Macquariedale
organic wineries.

Cost \$25 includes bus trip and
morning tea (Buy or BYO lunch)

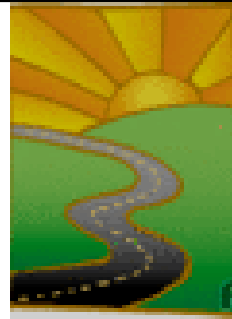
Bookings and payment by 13th February
Contact: Bron on 49977185



Wootton Way Clean Up

A third clean up will be undertaken on Monday 8th of February 2010, 9am-11am. Meet at the cafe. Have you 2 hours spare to help?

We will be starting where we left off last clean up, at the second set of concrete barriers at the base of the mountain.



What's to be seen in Wootton now?

- * Bloodwood- knocks you over with it's honey nectar perfume
- * Hairy Clerodendrum with a purple star and a red centre
- * Scrambling Lily - look down for the delicate mauve flowers.
- * Wattle - one of around 1500 species in Australia
- * Lilly Pilly - light pink round fruit, can be used for cordial but best left for the birds.
- * Latham's Snipe - came all the way from Japan
- * Fig Bird - feeding off all the fruit
- * Koel - with it's bright red eye foretelling rain
- * Scaly Breasted Lorikeet - seen in noisy large flocks
- * Dragonflies- often seen on dams
- * Swamp hens - are nesting
- * Yellow Robin - busy as always
- * Superb Fairy Wren - looking magnificent
- * Regent Bower birds - striking yellow and black colouring
- * Red Wattle bird - feeding on the flowers in everyone's garden
- * Blue Faced Honey eater - striking blue face
- * Pardalote- nesting in earth banks, blink and they're gone
- * Rufous Fan tail - a real show off
- * Eastern Spine bill - a sleek, streamlined black, brown & white bird
- * Land Mullet - a black lizard, quite human friendly



WOOTTON SUSTAINABLE FARMING GROUP

In 2010 Sustainable Agriculture is coming to Wootton. Joel Dunn, Catchment Officer Great Lakes Council, is organising for a group to be formed in Wootton, to share ideas on sustainable farming practices. Currently there are groups throughout the Great Lakes that have been active for a number of years, quite successfully. Anyone in the Wootton area that runs an agricultural enterprise is invited to join this group.

Joel Dunn's contact details are as follows: ph 65917317 & mob 0410295560. The first meeting of the Wootton Sustainable Farming Group will be at Mike & Caro Badcock's property, 589 Newmans Rd, Wootton on 9.00am Friday, 19th February 2010. Please contact Joel Dunn to book your place.

Great Lakes Catchment Management Group

The first meeting for 2010 will be in the old school in Wootton on February 10th. The closed meeting will be held in the morning. However, any interested members of the public are welcome to a lunch at 12pm followed by an open forum for landholders where you can raise any issues relevant to the group. This will then be followed by a special interest talk, topic still to be advised. If you are interested in attending please contact Stacey Tyack 65917378 or Stacey.tyack@greatlakes.nsw.gov.au
Caro Badcock, Wootton Community Representative

Wootton Fire Brigade News



Fire Permits

Fire Permits are required for all fires until 30 March 2010. RFS Fire Control Tuncurry (6555 5782, Mon-Fri 9.00am to 4.00pm) must be notified 24hrs prior to lighting of any fires. All neighbours must be notified 24hrs prior to lighting of any fire. Any fire that is lit with a permit must be completely extinguished if a total fire ban is declared. Permits will be issued on Thursday. To make an appointment for a permit, contact Mike Badcock on 49977337.

Meetings & Training

Meeting Dates: Sunday 21st February, 21st March & 18th April 9.00am

Training Dates: Saturday 6th March, 3rd April 9.00am

Meetings are the 3rd Sunday of each month and training is on the 1st Saturday of each month. Meetings and training take place at the fire station in Squires Rd, Wootton.

New Members Required

If you're over 16, male or female and have any spare time please consider joining the Wootton Fire Brigade. Application Forms are available from Mike Badcock 49977337.

Little Troublemaker: Predators Delight!

As the weather warms up so does the activities of many of our little troublemakers. It is the time when termites commence their social swarming. Termites are not always white, wingless and blind. In order to create social swarms, the colony emerges from being underground after at least three years. Flying termites are at their reproductive stage and are short lived.

A swarm can be quite a sight, one minute it's clear outside and the next you may think that a part of the sky has greyed as the sheer mass of a swarm can be truly spectacular. Termites swarm in order to start new colonies. Colonies send off large numbers of winged reproductive termites called "swarmers." A swarm is recognisable by the sudden appearance of hundreds to thousands of these swarmers, usually seen at dusk. This swarm strategy means that there are more termites than predators can cope with, guaranteeing some termites survive. The swarm often lasts just a few minutes, as swarmers fly a short distance, then fall to the ground and lose their wings. Most swarmers die within a day or so of the swarm.

Termites are great weather meters, sensing changes in air pressure associated with changing weather conditions. A combination of several successive days of above average temperatures followed by light rain triggers swarming. Swarms activity varies geographically occurring most often in the Spring.

Termites are social insects with different members of the same species having different roles. There are soldiers and workers, queens and kings, each with a special function in the colony. Winged termites found new colonies - any member of the swarm is a potential king or queen and for these otherwise social workers, it's each termite for itself! The future pairs look for damp, rotting wood so most houses are not at risk. It is rare for pairs to survive, but those that do may live for more than seven-teen years.

Not everything about termites is bad. They are important in nutrient recycling, habitat creation, soil formation and quality and swarmers are a great source food for countless predators. Termites assist our soils in its ability to store water. It is clear that termites are great buddies for our country but are not such welcome guests in our backyards.

Did you know?

Termites have been used to find minerals such as diamonds and gold. Around the world, lots of people eat termites. Winged termites are apparently very nutritious!

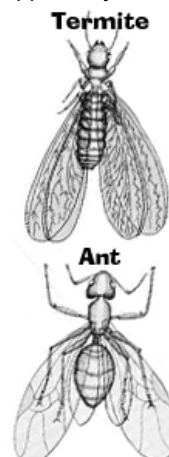
How to tell a termite from an ant

Termites

Have antennae that are almost straight
Both wing pairs are the same size and wings are virtually twice as long as their body
Wing veins are not visible to the naked eye
Wings break off easily, with just a touch

Ants

Have antennae that are elbowed (bent)
Wings differ in size. The outer pair is larger than the second pair.
Wing veins are usually easily seen with the naked eye
Have sturdy wings that do not break off easily



Yoga starts up again in February

- Wootton Hall, Wednesday 6pm 3/2
 - RSL Hall Bulahdelah, Monday 6pm 1/2
 - RSL Hall Bulahdelah, Tuesday Morning 2/2
- Call Peter on 49977201 for more details

Great Lakes Council Bulky Waste Clean Up February 8th to February 19th

During the collection period, residents can place bulky mixed solid waste and metal items in **two separate piles** on the kerbside for collection. The maximum size of each pile is limited to two cubic metres & mixed piles will not be removed. Specific dates for each zone will be notified as the collection time draws nearer. For more info contact Midcoast Waste Services Customer Service Hotline on 1300 290 763

New sign appears on Squires Road

This sign recently appeared at the beginning of Squires Road thus another council responsibility being relinquished. The continuing story of Squires Road maintenance goes on. The residents and users of Squires Road are losing the energy to fight council on this ongoing issue once again. When will it be included in its regular maintenance schedule?



For Sale (This service is free)

- Lawn mowers from \$60.00 Phone 49977404
- 3 metre Steffl Tinny plus 5hp Honda motor on a folding trailer. Excellent cond., fully equipped. \$3,200 ono
Phone Rob 0422 416691

Found

One young Kelpie (about 1 year old) found on the Pacific Hwy, Coolongolook near the cemetery. Found recently. Will be taken to the pound if not claimed soon. Please call 49977490 after dark.

DIRECTORY

Accommodation

Too many visitors! **Wootton Guest House**
4 a/c bedrooms with ensuites & balconies,
reasonable rates. www.woottonguesthouse.com.au
Peter & Leanne **49977201 0407974420**

Lotus Retreat Award winning Luxury accom-
modation & Day Spa. Massage & Day spa
body treatments, facials & organic skincare
products. www.lotusretreat.com.au
Kerry Bromage **49977320**

Air Conditioning

Repairs, sales, installation. Domestic and
commercial. Mark Tidbury Lic no 123069C
0427500329 49977308

Building & Maintenance Contractor

Solutions to building problems Lic 631C
Rob McDougall **0427 955958 49977335**

Church Open House Every Sunday

Arrive at 10am. Share lunch, fun for kids.
Entrance opposite Forest Lodge on Wootton
Way. Dave and Kathy Barker **49974675**

Computer services

Software installation, cleanup, Website
design, Hardware upgrade, Custom build!
New parts warranty.
Peter **49977223**

Earth Moving

Excavation, demolition, auger, rock hammer,
grab bucket, tipper truck hire
David Knezevic **49977402 0410 441428**

Horses Gembiras Docs Onyx dual sire reg-
istered stallion AQHA-A17174 ASH-
SM133207 Standing at stud: progeny usually
for sale. Gembira Horses
49977335 0419201913

Paving Down to Earth Paving - Patios,
paths, driveways, brick edging Lic no
37348C Walter Hacene **49977344**

Shaun Clark Interior/exterior quality
workmanship Free quotes
49976009 0411 253500

Plumber

Richard Green Plumbing All plumbing,
drainage, gas & LPG fitting, metal roofing
domestic, commercial, industrial Lic no.
53903C
0418 618583 65591555

Renewable Energy

STS Services P/L Solutions toward Sus-
tainability, Solar systems Grid connect or
Stand alone Lic 27928C Accredited
F524 **49977167 0417369670**

Real Estate

Edes Real Estate Pty Ltd - Stock & Sta-
tion Agent & Property Management Brian
Ede www.edes.com.au **49974566**
49977180(A/H) 0408492883

Removals

Dave Barker Removals
"Moving with Care" **49974675**

Shower screens- Glass repairs

Security screens / Doors call Neil
0402125526 0427842764

**Advertising rates for 2009/2010 for the
Wootton Valley News Directory are
\$55 for Non-members,**

\$45 Members - per 4 line ad space

Please contact the editors for new
advertisers or wording changes.

Please send a cheque payable to the

Wootton Community Network at
1633 Wootton Way, Wootton 2423
or you can pay by bank deposit.

Advertising due 30th June.

These businesses support this

newsletter. Please
support them wher-
ever possible.

