

WOOTTON VALLEY NEWS

FEBRUARY - MARCH 2009 NO 58

DISTRIBUTION 400 WOOTTON COOLONGOOK
BUNGWAHL BUNYAH BULAHDELAH

Giant Moss *Dawsonia superba*

This Giant Moss resembles stands of miniature pine trees. Although called Giant Moss, this species only grows from 10cm to 50cm in height; but it is one of the largest in the world. Giant Moss prefers moist shady areas. This species inhabits areas along the East Coast of Australia, including Tasmania and also New Zealand. The colour is both light and dark green. When dry the needles close to form brown thin stalks. When wet the needles are open. A neat trick is to pour a glass of water on them and watch the needles open before your eyes.



COMMUNITY CALENDAR

February	Wootton Tennis Competition Starts
Thurs 5th Feb	Wootton Community Network Meeting 7pm Café
Friday 6th Feb	Men's Group starts Wootton Hall 5-7pm
Sun 8th Feb	Wootton Fire Brigade Training Day 9am Fire Shed
Sat/Sun 7/8th Feb	Bulahdelah Bass Bash 5am sign on at the Riverbank
Sunday 8th Feb	Community Chat 2pm Brush Turkey Café Verandah
Sat 14th Feb	Valentines Movie & Supper Night Brush Turkey Cafe 7pm
Sat 28th Feb	Community Dinner Mauritius Theme 7pm Café
Sun 8th March	Wootton Fire Brigade Training Day 9am Fire Shed
Sat 21st March	Bulahdelah Uniting Church Fete 8am-2pm
Sun 22nd March	Wootton Fire Brigade Meeting 9am Fire Shed

Published by Wootton Community Network Inc

Editors Bronwyn Little 49977185 and Pat Tate 49977292

Phone: 49977296 brushturkey@live.com.au Visit our website @ www.wootton.org.au

Wootton Community Network

WCN is a not for profit incorporated community group originally set up when Wootton was bypassed by the Pacific Highway. It's aims are to create a sense of community, a central meeting place, to nurture local business, create employment, disseminate information, act as an umbrella organisation to lobby government agencies and as a forum for ideas to create a more sustainable community. Wootton Community Network meets the first Thursday of EVERY month, at 7pm at the Brush Turkey Cafe. Next meeting dates are 5th February, 5th March, 2nd April. ANYONE AND EVERYONE is welcome to attend these meetings.

Kitchen Renovations The coffee machine has been repositioned, as well as moving the freezer and storage cupboard. The final finishing touches are still to be done.

Creative Outdoor Furniture Workshop The last workshop held was a great success and a beautiful outdoor setting is now being used at the café. Another workshop will be held soon. Contact the café for details.

Centrelink recipients The Wootton Community Network is a host organisation for Centrelink recipients. This arrangement is of benefit to both the café and any locals concerned. If anyone has obligations to Centrelink contact Bron Little on 49977185 to discuss further.

Roadwork Improvements Have you noticed the widening of the dangerous first corner in Wattley Hill Road and the new drainage work on the corner of Possum Pie and Squires Road? This has occurred after successful lobbying of Council by the Wootton Community Network. One of the many benefits of having an active group representing our local area. The new sealing on Wattley Hill Rd near Barbies Road has also been repaired. Thanks to Council for making our roads safer.

What Next?

We have great community facilities in Wootton,
how can we make the best of them?

It's time for some fresh input and energy so let's have a chat!

Where: Brush Turkey Café verandah

When: Sunday 8th February 2pm

Things to consider: A place to meet, A place for everyone,
Regular community activities

Where do the Wootton Community Network and the
Brush Turkey Café fit in all this?

Contacts: Fran 49977323 or Pat 49977292 Wootton Community Network
Email: brushturkey@live.com.au Website: wootton.org.au

Women's Group Starting soon at the Brush turkey café.
Ring Fran on 49977323 or the editors if interested.

Café News

Cafe Volunteers We are always looking for volunteers to work in the cafe. Thanks to our new volunteers, Robyn Smith, Emma & Maureen Guthrie and Pam Dunne. (If you don't want to work in the café there are lots of other jobs, including washing tea towels/aprons, washing floor, computer entries, writing letters etc. etc. etc.)

Change of Menu We will be introducing a new simpler menu soon which will include mezze plates (a selection of tempting savoury treats) and homestyle pies as well as lasagne, spinach fillos and of course, our luscious cakes, great organic coffee and a varied selection of teas and drinks.

Community Dinners

Xmas Dinner Our Christmas Party was a great success with fantastic music by Mick & Nicky Legge & Steve Everingham

Australia Day Dinner We had a lovely night with some great Aussie Icons, including Edna Everidge, (Patrick), a life saver (Wayne), a jillaroo (Leanne), The opera House (Bron), an ocker (Garry), a jar of vegemite (Elizabeth). The stories were entertaining and the winners were Frank Tate, Rose Mahar, Leanne and Danielle.

Cafe Garden We've sourced much of our produce for the café from the garden and frozen some that were in overabundance. Tracey's vigilance is really paying off.

Goods for Sale Do you have any goods, produce, crafts etc that would you like an outlet for? At the moment we are selling honey, eggs, jams, pottery and T-shirts. We are trialling lavender based products soon. Contact the café.

Artwork at the Brush Turkey Cafe

The January and February artist is Pam Dunne from Coolongolook. Her first solo exhibition is called "From the Forest to the Ocean". It features works in water colour and ink with oil pastel. All works are available for sale and in fact eight of her works have been purchased to date. Pam studied art with her teaching degree in London and also received an art certificate with honours from Seaforth Technical College in Sydney. She taught in Sydney and for the last 10 years at Tuncurry public school before retiring last year. She originally worked in oil and acrylic, but recently has worked mainly in water colour. Pam is an active member of the Forster Art and Craft Society and the Great Lakes Art Society. She and her husband live on a farm in the hills behind Coolongolook. Pam held a well attended opening night on 9th December. A lovely friendly night. Another great community event.



Artists Wanted Anyone interested in exhibiting in the cafe, please leave your details at the Brush Turkey Cafe.

VALENTINES DAY MOVIE NIGHT PARIS, JE T'AIME

This movie consists of 18 x 5-minute segments made by a group of international directors, some well known, some not very well known at all. Each was given a district of Paris as a backdrop, but otherwise a free hand to tell whatever story he or she wanted. **Saturday 14th February**



**Brush Turkey Café 7pm
\$10 includes supper & nibblies**

Men's Night Out

Every Friday night from 5pm to 7pm in the Community Centre at Wootton, (the old school).

All men, all ages, all welcome.

Commencing Friday, February 6. You can choose to play cards, throw darts, have a drink or have a chat. To keep you honest at the card table is Eric Wilkes, to keep watch at the throwing line is John Hammond and drinks by your honour. This is a sanity initiative, lacking in format, but with the best intentions. John Smith on 49977178.



Bulahdelah & Myall Lakes Local Health Advisory Committee

Your Good Health Did you know that community transport is available to those unable to drive or be driven to the shops or to the doctor's?? A not-for-profit organization known as the Manning Valley and Area Community Transport Group (MVACTG) operate out of Tea Gardens and offer individual transport services. Eligibility is determined on the basis of transport disadvantage. Transport for groups may be provided using a mini-bus driven by one of a team of volunteers. Enquiries and bookings may be made through the Tea Gardens office on 49972266. Did you know that some Bulahdelah residents avail themselves of the service and that there are no volunteers currently living in Bulahdelah or the immediate area?? You could make a difference. Why not become a volunteer driver? Out of pocket expenses are paid by the MVACTG when a driver uses his or her own car. Enquire now about the conditions to become a volunteer driver through the Tea Gardens office on 49972266. Did you know that the MVACTG has available a free kit "Your Local Transport Guide"?? Included in the kit is information on such transport needs as: country care link; transport for veterans and war widows; health related transport; community transport; taxi services; and air services. Further information may be obtained through the Tea Gardens office on 49972266. Alternatively, help is just around the corner when you ring Julie Richardson on 49977130 or John Smith on 49977178.

A Tosser in our midst

Travelling along Wootton Way during the holidays, my partner and I noticed bags of garbage dumped at the side of the road. Blaming tourists (as we all do) we decided, as good citizens of Wootton, to pick up the rubbish and dispose of it in a responsible manner. Imagine our amazement that amongst this garbage there was an envelope addressed to a resident on Wootton Way. Come on local folk what has happened to pride in the beautiful area in which we are so privileged to live in. Either take your rubbish home with you, use rubbish bins, or visit the local tip at Bulahdelah. The Bulahdelah tip hours are

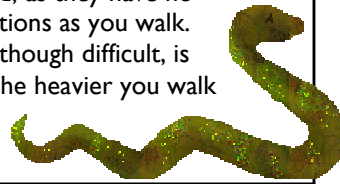
Tuesday: 1:00pm - 5:00pm

Bron Little

An ingenious way to catch and release a red-bellied black snake!!

Rather than killing a snake that has come too close to your home, you can catch it and set it free away from your house in the bush. The trick is to catch the snake in a glass flagon. Apparently, snakes cannot resist a raw egg, so break an egg and drop it in the bottom of the flagon and lay the flagon near the snake's hide-out. Once he's busy feasting inside, pick up the flagon, shake in the tail, and screw on the lid. Be careful when releasing! I read about this method recently in "Intimate Secrets of a Flamboyant Gardener" by Babs Corbett and may only work with a small snake.

Remember that red-bellies are shy creatures who will evade humans rather than strike. It is also a fact that if you have red bellies in your yard you are not likely to have Brown Snakes. They actively chase them away as the red bellies' toxin kills browns. Also, it is illegal to injure or kill native wildlife. A simple deterrent for snakes is to walk heavy footed, as they have no ears and cannot hear. Rather, they sense the vibrations as you walk. If you come across a snake the best thing to do, although difficult, is to stand still, as they don't know you are there. The heavier you walk the better the snakes are at evading you. Pat



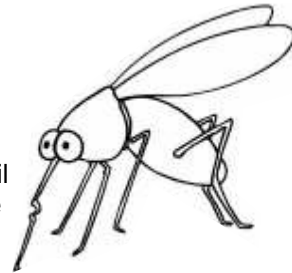
Wootton Fire Brigade News

Training Days are being held at the Fire Shed on Sunday 8th Feb and Sunday 8th March at 9am. The next Wootton Fire Brigade Meeting is being held on Sunday 22nd March at 9am in the Fire Shed.

Fire Permits are required until March 31st 2009.

Contact Mike Badcock on 49977337

Mosquito Alert



- This area has 30 different types of mosquitoes.
- Only females bite, they need blood for egg development.
- They lay eggs as rafts on the water surface, or on moist soil or vegetation. Breeding sites include: swamps, creeks, tree holes, septic tanks, drainage pits, unused swimming pools and household items such as jars, tins and pot plants.
- Healthy wetlands are less likely to produce large numbers of mosquitoes as a balanced ecosystem will contain natural mosquito predators (birds, bats, fish, frogs and aquatic insects). Some mosquitoes may help pollinate plants.
- Backyard breeding mosquitoes generally do not fly more than 100m to feed but some mosquitoes can travel over 20km from wetlands.
- They have piercing and sucking mouthparts allowing them to suck in blood and spit out saliva that serves as an anticoagulant (stops blood from clotting).
- Mosquitoes attractants include carbon dioxide (you give off more carbon dioxide when you are hot or have been exercising. A burning candle or fire is another source), warmth, moisture, (Mosquitoes are attracted by perspiration because of the chemicals it contains and also because it increases the humidity around your body) odours, (floral or fruity fragrances in addition to perfumes, hair products, and scented sunscreens) skin temperature (the exact temperature depends on the type of mosquito. Many mosquitoes are attracted to the slightly cooler temperatures of the extremities) and sight at close range.
- Mosquitoes in the Lower Hunter and Mid North Coast region are capable of transmitting viruses including Ross River virus and Barmah Forest virus. Tropical pathogens including Malaria parasites and Dengue virus are not present in the local region. Mosquitoes do not spread HIV/AIDS or hepatitis.

REDUCING MOSQUITO BITES

Mosquitoes are most active during the warmer months, particularly following rainfall or high tides. Personal protection is the best way to reduce biting.

- Avoid going outside around dusk and dawn.
- Wear light-coloured loose clothes, long sleeved shirts, pants and full footwear.
- Apply an insect repellent. (In a Choice Test in 2005 they found that synthetic repellents containing DEET or picaridin outperformed natural repellents but natural repellents were effective if applied often. Natural repellents tend to be volatile plant oils such as Lemon Eucalyptus, Cinnamon, Rosemary, Lemongrass, Peppermint, Lemon Myrtle or a mix.)
- Burn insect repellent coils or sticks, or use electronic heat pads.
- Properly fit screens to doors and windows. Cover chimneys & ventilation vents.
- Sleep under mosquito nets in unscreened houses or while camping.
- When mosquitoes are present, spray an environmentally acceptable aerosol underneath beds, behind furniture and other dark places before dusk.

Information from Hunter New England Health www.hnehealth.nsw.gov.au and Anne Marie Helmenstine Ph.D 'Strategies that Work'

Rebates and Grants Did you know?

FEDERAL GOVERNMENT LPG REBATES

The Scheme is designed to encourage the uptake and use of LPG as an alternate fuel. There are three different grants available, from \$1000 to \$2000 subject to eligibility criteria. The grant is administered by the Department of Innovation, Industry, Science and Research. Medicare Australia and Centrelink offices deliver the grant and are the contact points for customer inquiries and claim lodgement. For more information go to www.ausindustry.gov.au

NSW GOVERNMENT RESIDENTIAL REBATE PROGRAMME

The **Rainwater tank rebate** Households **not connected to the mains supply** are eligible for a rebate for the purchase of the **tank only**, up to \$500. The tank(s) must have a minimum 2000-litre capacity and be purchased in full and installed between 1 July 2007 and 30 June 2009.



The **Hot water system rebate** provides up to \$1200 to switch from electric to solar, heat pump or gas hot water systems. The new hot water systems must:

- .Replace an existing electric hot water system
- .Be for residential properties in NSW only
- .Be purchased in full and installed between October 2007 and June 2009
- .Be installed by a licensed plumber

The **Ceiling insulation rebate** provides half the cost of installing ceiling insulation in your home, up to a maximum of \$300.

The **Washing Machine rebate** provides \$150 for buying a 4.5 star rating front loader. For more information go to <http://www.environment.nsw.gov.au/rebates/>

SOLAR HOMES

Rebates and grants are available for the purchase and installation of major equipment items. Equipment must be new and not second-hand, New System 450 watts Up to \$8000 and Extensions to Old systems 450 watts Up to \$5000.

Go to www.environment.gov.au for more information

Bulahdelah Uniting Church Fete

Sat March 21st, 8am - 2pm

Cnr Blanch and Crawford Sts.

Come and browse or buy.

Freshly baked goodies, morning tea,
new and used clothing,
hand made ironing board covers,
white elephant stall, plants,
books, toys etc.

If you would like to donate
any of the above

please call Judy Hammond on 4997 7272
to arrange pick up of goods.



DIRECTORY

Accommodation

Too many visitors! **Wootton Guest House**
4 a/c bedrooms with ensuites & balconies,
reasonable rates. www.woottonguesthouse.com.au
Peter & Leanne **49977201 0407974420**

Air Conditioning

Repairs, sales, installation. Domestic and
commercial. Mark Tidbury Lic no 123069C
0427500329 49977308

Building & Maintenance Contractor

Solutions to building problems Lic 631C
Rob McDougall **0427 955958 49977335**

Church Open House Every Sunday

Arrive at 10am. Share lunch, fun for kids.
Entrance opposite Forest Lodge on Wootton
Way. Dave and Kathy Barker **49974675**

Computer services

Software installation, cleanup, Website de-
sign, Hardware upgrade,
Custom build! New parts warranty.
Peter **49977223**

Earth Moving

Excavation, demolition, auger, rock hammer,
grab bucket, tipper truck hire
David Knezevic **49977402 0410 441428**

Electrical Services RDO Electrical Services

Rob Oxford C/LIC No. 8811C All areas
790 Wattle Hill Rd **0416 090887**

Horses Gembiras Docs Onyx dual sire reg- istered stallion AQHA-A17174 ASH-

SM133207 Standing at stud: progeny usually
for sale. Gembira Horses
49977335 0419201913

Massage Trigger point, therapeutic & reme- dial massage. Day Spa body treatments &

facials using 100% natural & organic hand-
made products. www.lotusretreat.com.au
Kerry Bromage **49977320**

Painter

Shaun Clarke Interior/exterior colour
Consulting & feature walls **0411 253500**

Plumber

Richard Green Plumbing All plumbing,
drainage, gas & LPG fitting, domestic,
commercial, industrial Lic no. 53903C
0418 618583 65591555

Renewable Energy

STS Services P/L Solutions toward Sus-
tainability, Solar systems Grid connect or
Stand alone Lic 27928C Accredited
F524 **49977167 0417369670**

Real Estate

Edes Real Estate Pty Ltd - Stock & Sta-
tion Agent & Property Management Brian
Ede www.edes.com.au **49974566**
49977180(A/H) 0408492883

Removals

Dave Barker Removals
"Moving with Care" **49974675**

Transport

G.T. Delivery Service Neil Ede
Daily runs Newcastle to Taree
Same day service **0412496566**

For Sale (This service is free)

- ◆ Lemon Myrtle Cheesecake \$35 only
made to order. To order in advance
Ph Bronwyn 49977185
- ◆ Push Lawn mowers from \$100 Ph
49977404
- ◆ Rotary Hoe Ariens 6 hp. Fairly new motor
\$1600 ono Ph: Terry 49977467
- ◆ Subaru 1990 DL 5 speed manual wagon
\$1000 ono no registration 0402 990471
- ◆ 400mm tree guards 20 for \$5 Available at
Brush Turkey Cafe

Advertising rates for 2008/2009 for the

Wootton Valley News Directory are

\$55 for Non-members,

\$45 Members -

per 4 line ad space per annum

Please contact the editors for new
advertisers or wording changes.

Please send a cheque payable to the Woot-
ton Community Network at 1633 Wootton
Way, Wootton 2423 Advertising due 30th
June. These businesses support this newslet-
ter. Please support them wherever possible.