



# WOOTTON VALLEY NEWS



DECEMBER 2018 JANUARY 2019 NO 117

DISTRIBUTION WOOTTON COOLONGLOOK  
BUNGWAHL BUNYAH BULAHDELAH

## Brushtail possum (*Trichosurus Vulpecula*)



The common brushtail possum (named from the Greek for "furry tailed" and the Latin for "little fox") is a nocturnal, semi-arboreal marsupial. Native to Australia, the second largest of the possums. Eucalyptus leaves form a significant part of the diet. Possums have been known to eat small mammals, rats and baby birds. The fur can be silver-grey, brown, black, red or cream with a brown to black tail.

One of the few Australian marsupials thriving in cities, common brushtails are inventive and determined foragers around humans with a liking for fruit trees, vegetable gardens, and kitchen raids. Possums are protected in NSW. It is illegal to catch possums without a licence. Roof access should be blocked off if you intend to feed them. Instead, provide a den or nest box well away from your home! Ella snapped a mother and baby.



## COMMUNITY CALENDAR

Sat 8 Dec	Wootton Hall Grounds: <i>Food Swap</i> 5pm Brush Turkey Café: <i>Light Supper night</i> , 6pm, supper \$10pp
Sun 9 Dec	Wootton Fire Brigade Shed: <i>training</i> , Squires Rd, 9am Community Library open 10am to 12 noon
Sat 15 Dec	<b>Wootton Community Christmas Party</b> Hall, 4pm Bring a plate of food to share
<i>Wishing you</i>	<i>a Merry Christmas and a Happy New Year!</i>
Sat 5 Jan	Brush Turkey Café: <i>Wootton Community Network Meeting</i> , 3pm
Sun 6 Jan	Community Library open 10am to 12 noon
Sat 12 Jan	Wootton Hall Grounds: <i>Food Swap</i> 5pm Brush Turkey Café: <i>Light Supper night</i> , 6pm, supper \$10pp
Sun 13 Jan	Wootton Fire Brigade Shed: <i>training</i> , Squires Rd, 9am Community Library open 10am to 12 noon
Sat 26 Jan	Brush Turkey Café: <i>Community Dinner</i> 7pm \$20pp



## Wootton Community Network (WCN) News

We have enjoyed so many events this year because of our committed members, all those who appear on working bees and other occasions when special jobs need to be done, and the paid up members who keep the network financial. *THANK YOU!*

The recent AGM elected committee members for all positions including the new Wootton Reserve Management Group (WRMG). Jim and Fran will be retiring from office in April, after many stimulating years as President and Secretary.

Bushwalkers at O'Sullivan's Gap enjoyed beautiful waterfalls, tall trees and fun company. More of these local walks will be planned in 2019, details on Wootton Community facebook page.

In 2019 we will continue dinners and supper nights as well as catering for special events like the Great Lakes Food Trail. The Café will open when people are available to help, such as for Mothers Day.

Rosters for mowing and other activities are being updated, come along to an event or contact [brushturkey@live.com.au](mailto:brushturkey@live.com.au) to find out how you can help.

**Diary dates: Sat 15th Dec Christmas Party 4pm, Sat 5th Jan WCN Meeting 3pm**

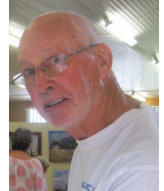




### Husband and Wife to exhibit art at the Brush Turkey Café.

**Margaret Millar** came to her interest in photography later in life, after full time employment as an office administrator, running a home and garden and competing in dressage with a thoroughbred horse. Margaret has joined the Forster Digital Photography Group, entering their monthly competitions, and will exhibit her digital work at Wootton.

**Philip Peters** migrated from London in 1968 and settled in Terry Hills, a semirural area with more horses per head of population than anywhere else in the greater Sydney area. This allowed Philip the opportunity to pursue his love of riding and where he discovered his love of Australian birds and flowers. On moving to Tallwoods, Philip went to classes at the Great Lakes Art Society. With gentle coaxing from his tutor and fellow artists, Philip's work as a pastelist is coming along in leaps and bounds.



### Static Water Supply Scheme. SWS

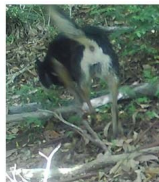


Following the Wootton Fire Brigade open day in September, our Fire Captain and volunteers are keen to implement a community Static Water Supply (SWS) programme. Under the scheme, you can arrange for an inspection of your water supply and you will be given advice on how to connect water tanks and other ways to assist the firefighters. Places where water connections for fire trucks will receive an SWS sign on their gate which will be visible from the road.

Contact: Captain Adam Garnett 0428 272 629.

### Wildlife cameras make dog baiting easier

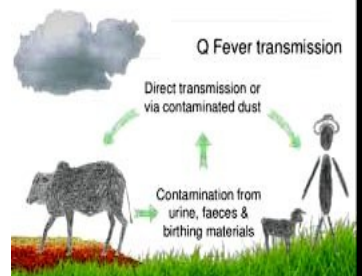
Baiting for foxes, wild dog and rabbits is made easier with wildlife cameras on loan from Karuah Great Lakes Landcare. Before putting out poison baits, the pests first need to be trained to eat the bait, so that the right poison can be put in the right place. These photos show how farm dogs and native animals like possums and wallabies might become accidental victims. The kelpie was chasing the fox.



Night camera - Photos by Fred

### Q Fever – are you protected?

Q fever is a disease that is spread to humans from animals, mainly infected cattle, sheep, goats. It can cause a severe flu-like illness. People who live, work on or visit a livestock farm are at risk. Everyone living or working on a livestock farm should talk to their doctor about Q fever vaccination. There are also practices on the farm that can reduce the risk of infection. For subsidised testing and vaccination, contact: Kylie Greentree 4930 1030







### Wild dog prowling on Newmans Road

The term 'wild dog' refers to all free-living dogs in NSW, including dingoes, feral dogs and their hybrids. NPWS controls wild dogs to minimise harm to livestock. To know more about wild dogs go to:

<https://www.environment.nsw.gov.au/topics/parks-reserves-and-protected-areas/park-policies/wild-dogs>

### Fireflies

Many parts of Wootton become enchanted at dusk in late October each year, when male fireflies emerge from their secret places in the bush and start blinking like little green fairy lights to impress the females waiting in the grass, hoping one will blink back. They need moist, undisturbed forest to live in and their larvae like to eat snails.

<https://australianmuseum.net.au/blue-mountains-firefly>

Did anyone in Wootton get a photo?

### Firefly

Of over 2,000 species of firefly beetles (family Lampyridae) worldwide, 25 are found in Australia.



Firefly showing luminescent area  
SIZE RANGE:  
8MM - 9MM

Photographer: Andrew Donnelly  
© Australian Museum



Video screen capture Radim Schreiber-YouTube



These entwined **red belly black snakes** were spotted having some fun on Wootton Way. *Peter Auriac*

We often find **Marsh Snakes** around the garden in moist, wet places where they can find frogs and lizards to eat. They seem quite shy and are reported to have a mildly venomous bite.



©Fred

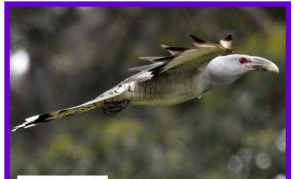
The **Channel-billed Cuckoo** lays its eggs in the nests of currawongs, magpies and crow; arrives in northern and eastern Australia from New Guinea and Indonesia between August and October each year and leaves Australia in February or March.



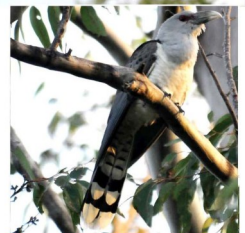
Photos, Fran



This **Tawny Frogmouth** got its wing caught one night in pink builder's line that had been left out to mark a new fence line. We picked it up using a blue tea towel (hence the blueness of the photo) and left it down by the BBQ in a basket so we could make sure it wasn't attacked while it was recovering. It is probably one of a pair that comes every year and raises it chicks in the paperbarks next door. I hope the incident did not prevent it from raising a full brood this year. We have seen them with three juveniles in previous years.



© Patrick



Channel-Billed Cuckoo

### Yoga is thriving in Wootton!

Naomi Patton is leading Yoga classes in the Wootton Hall on Wednesdays at 9.15am, and a bunch of people can be spotted floating out of the hall around 11am looking very happy and relaxed. \$15 per session. Why not join us?

*No classes 19th December or 2nd January*

## Wootton Rural Fire Brigade is always on the lookout for volunteers!

*Training is on the second Sunday of every month.*



### MidCoast Council Rural Strategy

MidCoast Council is preparing a Rural Strategy which will affect people living in Wootton. Find out more on their webpage <https://www.midcoast.nsw.gov.au/Have-Your-Say/Rural-Strategy> and at our Wootton Community Network meetings.

### Someone is listening to us.....

The University of Canberra's **Regional Wellbeing Survey** mission is to support research that improves the wellbeing and quality of life of people living in rural and regional Australia.

Your participation in the survey makes a difference. It produces data for community use to inform planning and decision making.

This year has a special drought section, asking **people in drought** about what types of support would be most useful, and asking **people not in drought** for their views on drought support. This will be used to produce a special report on supporting rural communities through drought.

All survey participants aged 18 or over can enter the draw to **win one of 16 prizes** worth a total of \$7,000. Winners will have their choice of a Flight Centre, Coles-Myer, WISH or Bunnings gift card, to the following value: First prize: \$2,000; Second prize: \$1,000; third to eighth prize: \$500; 10 runner-up prizes of \$100.

The survey is voluntary, confidential and anonymous, and **closes on 14 December 2018, at midnight**. Do the survey online at [www.regionalwellbeing.org.au](http://www.regionalwellbeing.org.au)



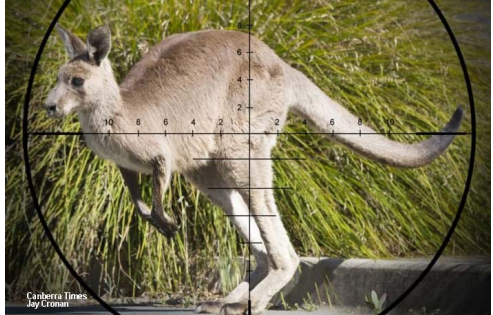
## CHANGES TO KANGAROO MANAGEMENT

The NSW Government is helping farmers manage kangaroos during the drought. Landholders still need to apply for a licence to cull kangaroos, but the carcasses will no longer need to be tagged and left in the paddock. Farmers will be able to use the carcass for a range of non-commercial purposes, such as bait meat.

Shooting on small properties may not be approved due to safety reasons, and cruelty is not acceptable.

Local Land Services has established a register of licenced commercial harvesters, as well as professional and experienced volunteer shooters who are willing to assist landholders to manage kangaroos.

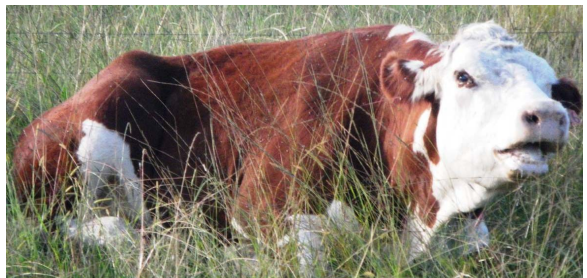
To apply for a licence, contact your nearest National Parks and Wildlife Service (NPWS) office. <https://www.lls.nsw.gov.au/agriculture/kangaroo>



## Three-day sickness warning

Hunter Local Land Services is reminding cattle farmers in our region to look out for Three Day Sickness. Recent rain has led to increasing numbers of mosquitoes and midges which can spread the disease and late autumn is the usual time we see cases in our region. Hunter Local Land Services District Vet *Jane Bennett* said livestock display a variety of symptoms, but generally most recover. "Animals affected by Three Day Sickness experience a sudden onset of fever over 40°, become stiff in their joints, lame and are often reluctant to move," she said. "They may drool, have watery eyes and a nasal discharge and infected animals will often go down. Cattle are typically only unwell for several days, hence the name Three Day Sickness - however, some cattle can take weeks to get up."

Heavy and high producing animals, such as bulls, pregnant cows and dairy cows appear to be most affected. High temperatures can lead to temporary infertility in bulls, and heavy animals suffer secondary issues just from being down for a long time.



Affected animals tend to lie down and will oftendrool from the mouth.

Photo internet



### Infected Giant Ratstail (Giant Pammatta ) Grass

This GPG on our place is looking very sick, and thanks to the lovely spring rain, it is heavily infected with a natural fungus called "*Nigrospora oryzae*" that we purchased and sprayed out to help improve our pastures.





## New rules for harvesting trees on private land

If you have forest areas on your property, run a sawmill or drive a log truck this is your chance to talk with government representatives about changes in the laws affecting you. Will the new rules help landholders improve their forests? Will there be more or less paperwork? Will landholders be able to trust contractors and sawmills who have special training and certification? *Who looks after roads that might be damaged by log trucks?*



For more information contact the Private Native Forestry review team on 1300 778 080. To view your property and comment on changed rules, go to [www.ils.nsw.gov.au/pnforestry](http://www.ils.nsw.gov.au/pnforestry)

**Wootton Directory** contains important local contacts.

Please email [brushturkey@live.com.au](mailto:brushturkey@live.com.au)

*if you know of an important contact that we should include here. Thanks.*



### Wootton Community Network

President: Jim O'Connor 0412963161  
Secretary: Fran O'Connor  
Treasurer: Leanne Wright 4997 7201  
Email: [brushturkey@live.com.au](mailto:brushturkey@live.com.au)

### Wootton Reserve Management Group

Hall bookings by email:  
[brushturkey@live.com.au](mailto:brushturkey@live.com.au)

### Wootton Rural Fire Brigade

President: Adam Garnett 0428272629  
Captain: Adam Garnett 0428272629  
Sen Dep Capt: Bernard Carran 0409684177  
Deputy Capt: Jim Garnett 0422916002

### Topi Topi Sustainable Farming Group

Chair: Carole Robinson 0428 4009 952

### Karuah Great Lakes Landcare

Joel.Dunn@glcr.org.au 0401932533

**MidCoast Council:** 6591 7222



**Police:** Sector Supervisor, Bulahdelah  
Senior Constable Trevor McLeod,  
4997 4204, 0427233745  
[mcle1tre@police.nsw.gov.au](mailto:mcle1tre@police.nsw.gov.au)

**State Emergency Service** 13 2500

### Local Land Services

Wild dogs Wingham 6553 4233  
Rural Resilience Group  
Peter Brown 0437 671 459

### National Parks & Wildlife

Booti Booti 6591 0300

**State Forests:** Wauchope 6585 3744

### Bulahdelah Waste Facility opening hours

Tuesdays 1—5pm

Fridays 12—4pm

Sundays 10-2pm

# DIRECTORY

## Accommodation

### **Wootton Guest House**

Too many visitors? 4 air conditioned bedrooms with en-suites and balconies. Reasonable rates. Contact Peter & Leanne [www.woottonguesthouse.com.au](http://www.woottonguesthouse.com.au)  
4997 7201 0407 974 420

## Slashing and Excavating Services

### **Chris Nebauer**

Free quotes, all areas, no job too small or too large. 70hp 4WD tractor, heavy duty slasher or mulcher - 4.5 ton excavator with auger, bobcat, tipper.  
[www.slashingservices.com](http://www.slashingservices.com) 0416 128 502

## Real Estate

### **Ede's Real Estate Pty Ltd**

For all your Real Estate needs Wootton, Bulahdelah and surrounding Areas  
Rate my Agent Winners 2018:  
Agent & Agency Award  
Your LOCAL AGENT 49974566 0408492883  
E: [edes@edes.com.au](mailto:edes@edes.com.au) [www.edes.com.au](http://www.edes.com.au)  
Remember Choosing Ede's is choosing success

### **Rural Valley Realty, Coolongolook**

Local agent for 25 yrs. Rural specialist.  
Steve Devries 0458 448 019 4997 7214

## Wootton Livestock Transport

### **Neil Ede**

For any livestock handling needs. 30 years experience.  
0407 787 920

## Builder

### **Binna Burra Construction**

Custom building and carpentry, servicing Smiths Lake, Pacific Palms, Wootton, Nابیac, Forster and surrounds.  
[www.binnaburraconstruction.com.au](http://www.binnaburraconstruction.com.au)  
Lic no. 299434C 0421 245 197

## Bulahdelah Post Office

Bank@Post personal and business banking needs, passports, travel and computer needs, phones, gifts and more. Bendigo bank.  
Mon-Fri 9am-5pm Ph 02 4997 4283

## Advertising for Wootton Valley News Directory

**\$50 per four line ad space (6 issues)**

Renewals 1st July

*These businesses support this newsletter.*

*Please support them wherever possible.*

**New advertisers welcome, contact Leanne at [woottonguesthouse.com.au](http://woottonguesthouse.com.au)**

## Health and Beauty

### **Dot Williams**

Local podiatrist available for all foot care. Weekly clinics at Bulahdelah and Wingham, home-visits throughout the district.  
[williams.dot@gmail.com](mailto:williams.dot@gmail.com) 0406 287 694

### **Liarne's Hair and Beauty**

Beauty treatments, Ladies & Men cuts and styles. A professional home based salon in a relaxing environment.  
Tuesday to Friday 9am to 5pm  
Saturdays 8.30am to 12noon.  
(After hours and Saturdays, appointments essential)  
462 Wootton Way, off Stoney Creek Road  
49974498 0412833700

## RPS Enterprises Bus Services

### **Paul and Renee Spiteri**

Charter bus available. Will be offering day tours, travel to entertainment venues, long lunches, anything within reason for a trip.  
49977149 or 0407 298 954



**Saturday 15th December 2018**

**Community Hall 4pm**