

# WOOTTON VALLEY NEWS

AUGUST/SEPTEMBER 2021 NO 133

DISTRIBUTION WOOTTON COOLONGLOOK

BUNGWAHL BUNYAH BULAHDELAH

## MACADAMIA NUTS (*Macadamia tetraphylla*, *integrifolia* and hybrids)



© Arjen A

Pre-European macadamia trees grow in the rainforests of South East Queensland, northern New South Wales and a tiny area of Central Queensland. Many people grow cultivated trees at home, like *Paul* and *Renee* in Wootton (see [Wootton Community](#) facebook).

[Healthy Land and Water](#) is launching a project aimed at finding wild macadamia trees that may be growing on old farms so these important

trees can be conserved for the future and new varieties bred.

[The Wild Macadamia Hunt - Healthy Land and Water \(hlw.org.au\)](#) and

[Read more at australian-macadamias.org](#)



© Arjen A

## COMMUNITY CALENDAR

*If you book & can't make it please let us know so we can use the waiting list.*

*Check [facebook](#) for other events TBA (FoodSwap, Meet the Artist etc.)*

*Check with Organisers, events may be changed for health requirements.*

Most updates will be on the [Wootton Community](#) facebook

Sun 8 Aug	• Wootton Fire Brigade Shed: training, Squires Rd 8am
Sat 14 Aug	• Brush Turkey Café: Risk Management Workshop 2:30pm <b>POSTPONED</b> • Wootton Hall: Food Swap <b>CANCELLED</b>
Sun 22 Aug	• Tennis Shed: Sports and BBQ day <b>POSTPONED</b>
Sat 28 Aug	• Wootton Hall: Community Dinner details TBA <b>CANCELLED</b>
Sun 5 Sept	• Fathers Day
Sat 11 Sept	• Wootton Hall: Food Swap
Sun 12 Sept	• Wootton Fire Brigade Shed: training, Squires Rd 8am
Wed 15 Sept	<b>**Copy deadline for October November Wootton Valley News**</b>
Sat 18 Sept	• <b>Wootton Community Network Annual General Meeting.</b> <b>2pm Venue TBA.</b>

The Wootton Valley News is usually delivered before the 1st day of each *second* month.

Published by Wootton Community Network Inc , created by Fred Fetherston & Arjen Arnold

Contact us by email [brushturkey@live.com.au](mailto:brushturkey@live.com.au)

Visit our website [www.wootton.org.au](http://www.wootton.org.au) and [Wootton Community](#) facebook public group

## Dear Woottonites

Well, Covid is back in Sydney and the regions are now under further restrictions. The 4 square metre rule now applies indoors. We regret to say that led us to cancel the plans for the July dinner. The Food Swap was also cancelled for July.

**We hope the August situation is less restrictive.** The Food Swap should happen on 14th August. We have also planned a **Sports Day and BBQ for the Tennis Shed reopening on the afternoon of Sunday, 22nd August.** The August community dinner is planned for Saturday 28th August. More on these events will come out to members and on Facebook as the Covid situation in August becomes clearer.

As the Wootton Community Network are the Managers of the Wootton Community Crown Lands it is necessary to deal with potential risk matters that may arise on the site from the nature of events and the facilities. With that responsibility in mind a **Risk Management Workshop has been organised for Saturday the 14th August at 2.30pm** at the Community Centre. All community members are invited although it will be necessary to register with the WCN Secretary to attend because of Covid requirements. The **Annual General Meeting for the Wootton Community Network will take place at 2pm on Saturday, 18th September**, and be followed by the first meeting of the newly elected committee. All committee positions will be open for election at the AGM. WCN Members will receive the election nomination form several weeks before the election.

At this time **I want to let you all know that I do not intend to stand for President of the WCN at the September AGM.** It has been an honour to serve the community as president and I hope that I have made a positive contribution over the past two years. I do thank all those who have contributed as committee members and volunteers over my time as president. Much has been achieved, a few **great events including the Fire Brigade Benefit last year and the Music/Dinner night and Thai Dinner** this year.

Unfortunately, Covid restrictions have caused great difficulties in organising social events. The **Tennis Shed has been turned into an attractive building** to enhance the Community Centre by way of a Crown Lands Grant and some important maintenance has been undertaken at the School Master's House and the water supply to the toilet cisterns. These past two years will be remembered for the 2019/20 fire season and Covid and all that has imposed on the community. The **WCN however remains strong as an organisation as we all look forward to a more normal environment ahead.**

Do stay safe and follow the NSW Government Health advice to keep our community safe.

*Bill Buckland*

*President WCN*



Construction is nearly finished and will be ready for a **Sports Day and BBQ for the Tennis Shed reopening** on the afternoon of Sunday, 22nd August. Check online for details.

The improvements include: refurbished walls, a lockable storage area for the new BBQ, and a spanking new *jeu de boules* court

<https://thegoodlifefrance.com/the-rules-of-boules/>



Farewell and many thanks to our long-time postie Leroy, we wish you good health.

Welcome to new

postie Ian, we're very happy you are continuing the good work!

### Risk Management Workshop

Saturday 14 August 2.30-4.30pm, Brush Turkey Café. All Welcome, afternoon tea provided. Sue Williams will facilitate understanding the strategic context of risk management for the Wootton community facilities.

For more information and to RSVP contact Sue W 0438 433 063



### Frosty Wootton—June 6 2021

Sylvie and Patrick had to clear ice from the poolcover and decided to wait for a warmer day before swimming.....

### Coolongolook Wootton Action Group

(CWAG) AGM Monday 23 August 7pm  
Coolongolook Hall. Pam Dunne.



**!Attention all Gardeners:** there's plenty to keep you warm and active in Winter. Thanks to the **Seed Circle** for these tips, they meet in Bulahdelah 10am on the 3rd Saturday each month.  
[www.facebook.com/groups/81675688966250/](https://www.facebook.com/groups/81675688966250/)



Winter in the Garden. July =  
What to Sow. Silverbeet, lettuce, parsley,  
Asian Greens, Radish - Divide and plant out  
Asparagus crowns, Rhubarb, Jerusalem Artichokes  
Garlic Chives, Comfrey, Yarrow + Yacon.  
August <sup>my mums</sup> Cherry Toms, Coriander, Lettuce  
Radish, Silver Beet, Parsley, edible Viola  
potatoes - indoors start, Zucc's  
Pumpkin, Squash, Basil, Toms, to  
get an early start.  
Things to do... Prune back Grapevines,  
Mulberries, stake Bananas for the strong  
winds coming August/Sept.  
Plant out fruit tree's to get them established  
before the summer heat  
Top up raised Garden Beds ready for planting  
out in Spring.  
Make some leaf mulch from all the leaves  
Start preping the beds for Spring  
it's just around the corner!  
Ready.... Set.... Garden! 😊

## WOOTTON RURAL FIRE BRIGADE [www.facebook.com/woottonrfs/](http://www.facebook.com/woottonrfs/)

Thankfully, the last couple of months have been quiet due to wet weather and retained ground moisture. A few call outs to MVA's, car fires, assist ambulance, and "good intent calls" have kept us active and the trucks warmed up. However, **we are operating under Level 2 RFS restrictions due to COVID which means only essential activities (call outs) are being attended to** ... and even then, we have to adhere to COVID protocols when at an incident.

The coming **fire season is designated as 01 October – 31 March 22** which gives everyone 3 mths to prepare. If anyone has concerns about preparation, bush fire plans, etc ... please call to discuss. Alternatively, there will **be an Open Day at the shed in the near future (date TBA)** subject to the current COVID rules.

A draft plan for our shed extension is currently with Council awaiting their comments prior to finalising the DA submission. This has been a protracted process but it is inching forwards so more news on this later. Once again, I thank the local & wider community for their past & ongoing support on this.

### **BEFORE BURNING OFF YOU MUST STILL CONTACT RFS AND YOUR NEIGHBOURS**

Use these links to [FIND OUT MORE](#) and to [USE THE ONLINE NOTIFICATION FORM](#)

For more info on CHECKING SMOKE ALARMS FOR WINTER

visit - [www.fire.nsw.gov.au/page.php?id=80](http://www.fire.nsw.gov.au/page.php?id=80)

**Captain: Adam Garnett 0428 272 629**

**Permit Officer: Michael Coventry 4997 7155 or 0407 458 167**



### [MyFirePlan | How Fireproof is Your Plan](#)

Free to a new owner: one half of an old water tank (approx. 3 m. diam). Suitable for a planter or wood storage.

Contact :email [secwootton@gmail.com](mailto:secwootton@gmail.com)



**Full details for the Community dinners and events** will be emailed to WCN members, and posted in social media.

Bookings are essential for all events. Sue W 0438 433 063.

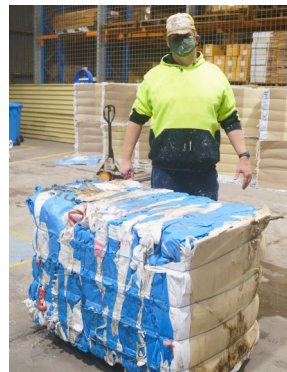


### Taree Valley Industries Big Bag Recycling

Valley Industries have partnered with Farmwaste Recovery and Mid North Coast Women in Dairy to help reduce farm waste in our area by compressing and **recycling fertilizer and feed bags**. *"A huge thank you to the local businesses for participating and providing drop off points free of charge to their customers:-*

**Norco Taree, Gloucester, Kempsey, Wauchope;  
Taree & Wingham Produce; Drury's Stockfeeds"**

[www.facebook.com/valleyindustries.com.au](http://www.facebook.com/valleyindustries.com.au)



### How well is my wood heater working? Where can I get good firewood from?

Wootton can get cold at night and often there's a lot of smoke from wood heaters. Clean, dry hardwood and modern heaters can warm your home using less wood and make less smoke. Firewood needs to be seasoned and dry, usually 6-12 months under shelter, and most farms can collect enough from fallen trees and old fenceposts.

**Legally** firewood can only be **sold** if it comes from:-

- *Trees harvested or timber collected in State Forests with a permit*
- *A farm with a plantation forest or a farm forestry plan registered with LLS to clear native vegetation ("allowable activities")*

What is **not legal**:-

- *Collecting any firewood from National Parks*
- *Collecting firewood from State Forests without permit*
- *Selling firewood from your farm or other properties without approved plans*

What you can do:-

- Plant a woodlot for your children
- Ask your firewood suppliers where they get it from
- [www.epa.nsw.gov.au/your-environment/air/reducing-wood-smoke-emissions/what-you-can-do-about-wood-smoke-pollution/check-your-heater-complies-with-the-standard](http://www.epa.nsw.gov.au/your-environment/air/reducing-wood-smoke-emissions/what-you-can-do-about-wood-smoke-pollution/check-your-heater-complies-with-the-standard)
- [www.lls.nsw.gov.au/help-and-advice/land-management-in-nsw/resources](http://www.lls.nsw.gov.au/help-and-advice/land-management-in-nsw/resources)



### Midcoast Council

#### Marine & Catchment Discovery Series

Looking for some online entertainment during covid?

Here are some great videos and stories about the special creatures living in our local waterways.

[www.midcoast.nsw.gov.au/Part-of-your-every-day/Council-Projects/Marine-Catchment-Discovery-Series](http://www.midcoast.nsw.gov.au/Part-of-your-every-day/Council-Projects/Marine-Catchment-Discovery-Series)

# Watch out for TICKS



© Jo L

Join the *celebration of*  
*National Wattle Day*  
*1 September*

[Wattle Day Association inc](#)

Karuah Great Lakes Landcare **“Phantom 4 RTK” drone is here** and is being used by members, more field days will be held in coming months for farmers to learn more and use it on their properties. This is a high-spec unit to enable precision mapping and measurements, and high-resolution imaging.

Joël Dunn at [joel.kgl.landcare@gmail.com](mailto:joel.kgl.landcare@gmail.com)

The Wootton Topi Topi Sustainable Farming Group will host one of the drone days, tentatively in October. We'll also re-schedule the Frog evening and a Fireflies Evening as covid permits. Fred



Shane Griffis is starting a group for veterans, he's posted details on the [Wootton Community page](#)



Shane Griffis

13 June · 🌐

Hello All,

Some may know me on here some may not but I am wanting to let you all know of a new community venture I am undertaking called A.10.Shun Veterans Support Group

**Local Land Services** launched a [YouTube channel “Poddy”](#)  
And there's a pile of information for landholders in their winter newsletter [Hunter LLS Ag ext newsletter \(nsw.gov.au\)](#):

## IN THIS ISSUE

PREPARING FOR SPRING CALVING & LAMBING .....	1
AUTUMN PASTURE UPGRADE STRATEGY .....	4
BEYOND THE SHED .....	5
MANAGING SEASONAL RISK AND MAKING THE MOST OF RYE GRASS GROWTH .....	6
MAKING EFFECTIVE IRRIGATION DECISIONS.....	8
PLANNING FOR SPRING GROWTH USING SOIL MOISTURE PROBES .....	10





**drumMUSTER**

**Bucketts Way Landfill**  
 6843 The Bucketts Way, Taree  
 South NSW 2430  
 Bookings are essential and can be  
 made by phoning 02 6551 5266  
 This site has collected **8172** drums  
 since inception.  
 For additional program information  
 contact  
**Phil Tucker: 0427 925 274**



**AgSAFE**  
PRODUCT  
STEWARDSHIP



Connect with us

**REMEMBER  
EVERY CONTAINER  
COUNTS**



**RINSE THEM OUT  
ROUND THEM UP  
RUN THEM IN**

**37,692,013**

Total containers collected

**1,748,891**

Last FY

**15,813**

Current FY

### NEW BANKING DETAILS FOR WOOTTON COMMUNITY NETWORK

**Annual membership fee** \$12.50 pp, please pay by direct deposit to:-

Wootton Community Network Inc.

Bendigo Bank BSB 633000 Account No 162518591

Reference = your name

Please email when paid to notify the Treasurer [brushturkey@live.com.au](mailto:brushturkey@live.com.au)

**Same banking details now apply for all MEMBERSHIPS and EVENT BOOKINGS**

**Wootton Directory** contains important local contacts. **Always dial 000 for Emergency.**

Please email [brushturkey@live.com.au](mailto:brushturkey@live.com.au) with other contacts to include here. Thanks.



#### **Wootton Community Network**

President: Bill Buckland

Secretary: Kate Hosey 0402 776 376

Treasurer: Leanne Wright 4997 7201

Events: Sue Williams 0438 433 063

Email: [brushturkey@live.com.au](mailto:brushturkey@live.com.au)

#### **Bookings—all facilities**

*Celebrating something special? Running a  
Course or a Market?*

*Getting people together?*

Kate Hosey 0402 776 376

#### **Wootton Rural Fire Brigade**

Captain: Adam Garnett 0428 272 629

Sen Dep Capt: Bernard Carran 0409684177

[www.facebook.com/woottonrfs](http://www.facebook.com/woottonrfs)

#### **Midcoast Fire Control**

Burnoff notifications 1300 643 262  
(24hour prior notice)

#### **Karuah Great Lakes Landcare**

[joel.kgl.landcare@gmail.com](mailto:joel.kgl.landcare@gmail.com)

Joël Dunn 0401 932 533

#### **Wootton - Topi Topi Sustainable Farming Group**

Fred Fetherston 0427 461 101

**MidCoast Council:** 6591 7222

**State Forests** Wauchope 6585 3744

**Police:** Sector Supervisor,  
Senior Constable Trevor McLeod,  
4940 7470, 0438 140 370  
[mcle1tre@police.nsw.gov.au](mailto:mcle1tre@police.nsw.gov.au)

**State Emergency Service** 132 500

#### **Local Land Services**

*Wild dogs* Laurie Mullen 0407 785 007

*Rural Resilience Group*

Peter Brown 0437 671 459

**National Parks & Wildlife** 6591 0300

**Fawna Wildlife Rescue** 6581 4141

**Electricity Essential Energy** 13 20 80

#### **Bulahdelah Waste Facility**

**opening hours**

**Tuesdays 1 - 5pm, Fridays 12 - 4pm**

**Sundays 10-2pm**

# DIRECTORY

**Advertising for the Directory is NOW DUE \$50 per four lines, \$5 per extra line (6 issues)**

- *Direct Deposit* to Wootton Community Network Inc.  
BSB 633000 Acc: 162518591 Reference = please use your invoice number
- *Cheque* made out to Wootton Community Network Inc.
- *Cash* handed directly to Leanne.

**New advertisers Welcome, contact Leanne at [woottonguesthouse@gmail.com](mailto:woottonguesthouse@gmail.com).**

Accommodation

## **Wootton Guest House**

Too many visitors? 4 air conditioned bedrooms with en-suites and balconies. Reasonable rates. Contact Peter & Leanne [www.woottonguesthouse.com.au](http://www.woottonguesthouse.com.au)  
4997 7201 0407 974 420

## **Ede's Real Estate Pty Ltd since 1956**

For all your Real Estate needs in Wootton, Bulahdelah and surrounding areas. *Agent/ Agency Award Winners 2018, 2019, 2020, 2021*  
LOCAL AGENT 4997 4566 0408 492 883  
Remember Choosing Ede's is choosing success  
[edes@edes.com.au](mailto:edes@edes.com.au) [www.edes.com.au](http://www.edes.com.au)

## **Palms Conveyancing & Property Law**

For all your conveyancing needs – Purchase, Sales, Family Transfers, Sub-divisions or Boundary Adjustments, we can help  
Call Brenda 65 540 404  
[brenda@palmsconveyancing.com.au](mailto:brenda@palmsconveyancing.com.au)

## **Neil Ede, Wootton Livestock Transport**

For any livestock handling needs. 30 years experience. 0407 787 920

## **RPS Enterprises - "Bulahdelah Buses"**

You require the transport we do the driving. Luxury Air conditioned seat belted buses available for wedding guest transport, winery trips, concerts, sporting events. Call Paul and Renee Spiteri to discuss your transport needs. 4997 7149 or 0407 298 954

## **Tim McDonnell Lic no. 14660**

Plumbing, Draining, Roofing Guttering  
Water tanks, Gas fitting  
Wootton & all areas – 0418 682 199

## **Binna Burra construction Lic no. 299434C**

Custom building and carpentry, servicing Smiths Lake, Pacific Palms, Wootton, Nabyac, Forster and surrounds. 0421 245 197  
[www.Binnaburraconstruction.com.au](http://www.Binnaburraconstruction.com.au)

**Bulahdelah Post Office** Bank@Post personal and business banking needs, passports, travel and computer needs, phones, gifts and more. Mon-Fri 9am-5pm 4997 4283

Real Estate & Legal

Wootton Transport

Building - Plumbing

Pest Control & Farm Services

Health and Beauty

## **Bugs Or Us Pest Control**

General pest and termite control. Specialising in termite detection with our termite detection dog. Pre-purchase inspections – 0490 454 644

## **B&H Rural Contracting**

Variety of agriculture & farming services, Machine operator, Animal husbandry, Vertebrate pest control, Fire mitigation and much more. Phone: 0401 312 877  
email: [info@bhruralcontracting.com.au](mailto:info@bhruralcontracting.com.au)

## **Liarne's Hair and Beauty**

A private home salon. All ladies and mens hairdressing. Waxing, relaxation facials, lash and brow tinting. Air conditioning, eftpos facilities. Tuesday to Friday 9am to 5pm 0412 833 700

## **Dr Lynette Arnoldus-Lewis**

Psychologist–Nabyac, Approved DVA Provider  
Domestic violence, Marriage counselling, Grief, Carers support, Family Issues  
65541535 0429 190 142  
[lynette.arnoldus@bigpond.com](mailto:lynette.arnoldus@bigpond.com)

## **Yoga Classes with Naomi Patton**

Wootton Hall. Mondays 9-10am we unwind with a gentle yin/restorative class, suitable for everyone, even those nursing injuries. Wednesdays from 9.15-10.45am it's an active Hatha class where we get moving. All welcome. 0414 387 008

## **Earth Elemental Massage**

Hawaiian Lomi Massage; Earth elemental massage (Hot stones, Herbal Compress, Sound Healing); Remedial Massage (health fund rebates available)  
By Appointment Only 0466 881 030  
Charmaine Nielsen, Willina

**2pm Saturday 18 September  
Wootton Community Network  
Annual General Meeting.**

***Come along, meet your Wootton  
community and get involved***