

WOOTTON VALLEY NEWS

AUGUST/ SEPTEMBER 2018 NO 115

DISTRIBUTION WOOTTON COOLONGLOOK
BUNGWAHL BUNYAH BULAHDELAH

Pacific baza (*Aviceda subcristata*) also known as the **crested hawk**:

While cleaning up after Essential Energy, Craig was swooped upon by a large bird, later identified as a Pacific Baza. Pat realised she had seen this type of bird in the same place 3 year's earlier! Slender, medium-sized hawk with a distinctive crest, an upper-side mainly dark brown, with a grey head and yellow eyes. It is conspicuously barred white and dark brown on the breast and on the underside of the tail and flight feathers.



It is found in coastal and subcoastal areas of northern and eastern Australia, Wallacea, New Guinea and adjacent islands. They have a distinctive hunting behaviour. When potential food is spotted in the treetops from above, the Pacific baza lifts its wings into a distinctive Vee shape and dives briskly into the canopy to devour its prey. It feeds on stick insects as well as other large insects, tree frogs, lizards, small birds and fruit. It nests high in forest and woodland trees, with a clutch size of 2-4.



COMMUNITY CALENDAR

Sat 11 August	<ul style="list-style-type: none">• Wootton Hall: Food Swap 5pm• Brush Turkey Café: Supper night, 6pm, \$10pp
Sun 12 August	<ul style="list-style-type: none">• Wootton Fire Brigade Shed: training, Squires Rd, 9am
Sat 25 August	<ul style="list-style-type: none">• Brush Turkey Café: British Themed Dinner, 7pm, \$20pp
Sat 1 Sept	<ul style="list-style-type: none">• Brush Turkey Café: Wootton Community Network Meeting, 3pm
Sun 2 Sept	<ul style="list-style-type: none">• Wootton Fire Brigade Shed: training, Squires Rd, 9am
Sat 8 Sept	<ul style="list-style-type: none">• Wootton Hall: Food Swap 5pm• Brush Turkey Café: Supper night, 6pm, \$10pp
Sat 29 Sept	<ul style="list-style-type: none">• Wootton Hall: Bush Dance + bring-a-plate dinner, 6pm, \$15pp

Sunday Openings at Wootton Community Library

1st Sunday: Marg **2nd Sunday:** Coleen **3rd Sunday:** Sylvie **4th Sunday:** Suzanne
Welcome to Dewi (and baby Toby) hosting the session on the 5th Sunday of the month.
Don't forget to come and say 'hello', help us file books and enjoy a cuppa.

Published by Wootton Community Network Inc

Editors: Caro Badcock 0408 415 420 email: caro_badcock@bigpond.com Sylvie Riviere 0408 861 051
Join our group on Facebook: Wootton Community or email brushturkey@live.com.au
Visit our website @ www.wootton.org.au

Wootton Community Network (WCN) News

So much has happened and is happening in the world of Wootton that our news is presented as individual articles elsewhere in the newsletter.

Jim

Dates to flag for October: Sun 7th: Great Lakes Food Trail; Sat 20th WCN AGM

Our first trivia night, held in June this year, was a huge success with over 60 people attending and strong interest in making it an annual event. Congratulations to the winning team 'Ella Fitzdrunk' (which in case you were wondering, as I know I was, came from a misheard 'Elephants Trunk'). The collective brain power of Aiden, David, Debbie, Holly, Ian, Joahna, Karlie, Kate made them run away winners with Chris Kennedy's outstanding paper aeroplane creation being the highlight of the evening. Thanks to Erik, Megan G and Monique for donating the prizes and for everyone who came along and made it such a great night. It's not too soon to start training for next year so you can see your team name on our (for one night at least) coveted Trivia Champions plaque.

Megan K



Poetry afternoon/evening. Lots of self penned poems, some Henry Lawson and a fabulous rendition of 'The Man from Snowy River' from Pam and Danny Dunne. Later a great supper and some music. Nice to see some new Bulahdelahites in Wootton.

Pat





Christmas in July at the Brush Turkey Café—WOW!

60 people enjoyed the food, the wine, the company, the trivia—won by the table with the 12 and 10 year olds!!!

****With the numbers attending it is important that you book early and please let the organisers know if you can't make it at the last minute because there is a waiting list.*

Great Lakes Food Trail—Long Table Dinner

The first Producer's Dinner was held on Saturday 21st July so everyone could get to know each other a bit better. The Mayor and other dignitaries joined us so we could promote the Trail. WCN were kind enough to supply their amazing lemon myrtle cheese cakes, which was accompanied with Serendipity Ice creams, Burraduc Buffalo and Thyme Ice cream.

Sue W (Topi Topi)



Mushrooms and truffles in Wootton

We don't know if you can eat them, but this has been another great year for truffles and mushrooms that are so important as food for native animals, and help to keep forests healthy. For more information you can visit this site <https://fungimap.org.au/>

Sue's F photos



We are United!!!!!!

On 8 June 2018 the Wootton Community Network became the official manager of the Crown Land containing the *Brush Turkey Café*, *Community Hall (old school)*, *principal's cottage* and *facilities*. This is a great outcome that we have been working towards for the last couple of years. Thanks to everyone involved including Council for their support during this process and for working with us to ensure a smooth transition. The Crown Lands Working Group - Caro, Jim, Megan and Peter - are continuing their work to put the necessary processes in place to manage the facilities, while the new management committee, named the *Wootton Reserve Management Group* with Alan Fallshaw, Chris Kennedy, Larn Garnett, Megan Kessler, Peter Dixon, and Peter Dunne are gearing up to make sure we make the most of the new community management arrangements.

*We'll be having a public meeting soon to talk about the new arrangements in more detail. Look out for an announcement of the date.

Megan K, Jim



O'Sullivan's Gap Picnic Area Update – great news!

Sunday 3rd June might have been wet in parts, but it was a big get together at the Brush Turkey café where members and visitors heard about the history of O'Sullivan's Gap and talked passionately about how they want it to be repaired and upgraded. A small group went for a walk. Thanks to everyone who has been involved. Steve Bromhead MP has now told WCN members that the government will keep the area open and that NPWS will consult with our community about it. We even made it in to the local newspaper!!

Fred and Pat

FEARS that O'Sullivan's Gap Reserve could be permanently closed to the public have been laid to rest, with National Parks and Wildlife Services (NPWS) assuring the community that the area will remain open. Wootton Community Network (WCN) member Pat Tate said the group raised concerns after being informed that the reserve, located between Bulahdelah and Wootton, "was facing likely closure due to costs and lack of use".

"We were planning on lobbying to get some improvements made to the picnic area and walking trail, but we were told that the preference of NPWS was to close the area," she said.

Addressing a crowd of residents at a recent public meeting called by the WCN, group member Craig Tate said the reserve is an important area

"We need to keep it open because people are never going to see these species together in any other place," he said.

"We need to have that recognised and published right across NSW as we are sitting on something that is essentially an iconic thing."

News Of The Area contacted NPWS for comment and received a statement confirming, "The O'Sullivan's Gap Picnic area will not be closed".

"Given the strong support within the Wootton community, NPWS will consult if any changes are proposed for the site," Senior Public Affairs Officer from the NSW Office of Environment and Heritage Stuart Cohen stated.

Pat said the WCN will continue to negotiate with NPWS to ensure the public can enjoy the unique area well into the future.

Iconic Reserve Stays Open



Members of the Wootton Community Network strongly support keeping the O'Sullivan's Gap Reserve open.

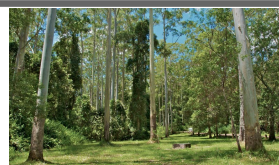
Feedback from accidental guest at the O'Sullivan's Gap Morning Tea:

I happened to get to meet quite a few people and sit-in on the discussion about the O'Sullivan's Gap area. A fascinating talk, that was well presented and obviously very well listened to...good job Craig Tate. I'd like to say "out loud" the truly warming feeling I got as I entered your little hall, the positive community energy was "PALPABLE"....and that's a word you don't get to use every day! I had no idea that a meeting was about to take place and so I was pleased that it was of great interest (and relevance) to me... I think you all live in a stunning environment which you enhance with your positive, friendly outlook and actions... Your little newsletter is another wonderful barometer of the community that you have made, it is POSITIVE throughout and literally sings of a community who actively seek harmony and friendship....what a wonderful breath of fresh air in today's world!! I will definitely be returning to visit, and to take Craig up on the chance to get the "Local expert tour" of that unique forest up behind O'Sullivan's Gap. I hope to re-connect with a few of you then. Keep up the good work and the good FEELING!!

Mick Gow

What's Next?

When we meet with NPWS again we want to put forward how the picnic area fits Wootton's strategic vision so it is not just "open" but safe, inviting and enjoyable for locals and visitors. More events will be held in the next few months. If you have any specific ideas or would like to help please contact Fred or Pat.



Starting September 12 Yoga is back at Wootton!

Every Wednesday morning 9.15 am, at Wootton Hall.

1.5 hour classes. Hatha Yoga classes for all levels. \$15 per class.

ALL WELCOME! Contact Naomi on 0414 387 008



2018 Wootton Bush Dance



On Saturday 29 September we will be welcoming Newcastle based bush band, the *Waterbombers* back to the hall for our annual bush dance, so dig out those dancing shoes.

Dinner will be the usual bring-a-plate, starting at 6pm, with bush dancing to follow. The band members will talk us through the dances so no experience necessary, just bring your enthusiasm and sense of fun. *All ages welcome.*

The dinner and dance will cost \$15 per person. *Places are limited* so please RSVP to Megan on 0418 420 608 by 21 September 2018.



Other events happening in the region

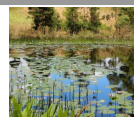
Aug 10: 9.30-12.30pm: Wang Wauk Farming Group, bi-monthly meeting (RSVP Ros McDiarmed 0412 793 446)

Aug 14 & 21: Introduction to Farm Planning, Dyers Crossing & Krumbach
Don't miss this opportunity to work with specialist presenters from Hunter Local Land Services to put a plan together for your property (RSVP Joël 0401 932 533)

Aug 20: 9.30-3pm, Farm and Dams Field Day, The Branch
Paul Park will answer your questions about building and maintaining healthy farm dams (RSVP Joël 0401 932 533)

Aug 23: Bus trip to Ag Quip. Due to the current seasonal conditions and quite often unfavorable trading conditions for farmers the Rural Resilience Group in conjunction with the Mid Coast Dairy Advancement Group have organised a bus trip to Ag Quip for farmers to get them away from the farm for the day, and to network with other farmers. (RSVP Peter Brown 0437 671 459)

Sep 21: Motion sensing camera workshop, Bulahdelah (RSVP Drew Morris 6591 7375)



WRFS Successful Grant Application!

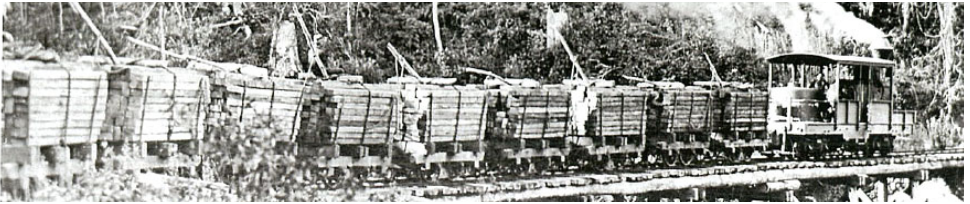
The Wootton Volunteer Rural Fire Service (WRFS) was successful in obtaining a Holiday Coast Credit Union Community Grant for 2 Samsung 10.1" tablets loaded with HEMA Offroad Maps to help the Brigade easily locate and fight fires. There is one for each Wootton truck. The Holiday Coast has been extraordinarily generous over the years to the Wootton RFS – this is the third successful grant out of three applications in the last 10 years.

Steve Bromhead MP presenting to Mike (Captain)

Old Railway Relic on display at Bulahdelah Courthouse Museum

BULAHDELAH Courthouse Museum has received a \$2,000 grant to construct 20 self-guided tour stations at the museum.

Thanks to the generosity of Mike and Caro Badcock who have donated a relic of the old tramway, found on their property, the damaged truck (carriage) bogie will become one of these stations. The wheel and axle were part of the carriage that would have been loaded with logs. The carriage was abandoned when it was damaged beyond repair when a very large log fell on it. It has been laying in the grass since that time in the 1920s.



Farm Forestry Field Day: Wootton Sunday 16th September 2018

Hunter Farm Forestry Network will be holding a field day about “Resilient forests using diverse plantings and enriched regrowth”. Come along to learn and share experiences with tree planting, regrowth areas, feral animals and weeds, and preparing a forest for more hot and cold temperature stresses.

This field day is a follow up to the 2016 field day. At that time, *Fred and Sue* showed us some new plantings. This time, they will show us 3m tall trees with a survival rate of 90%. Not bad. A really good study in what can be achieved if you do the homework and the hard work. RSVP to Trevor on secretary@hffn.org.au or 6547 3552

Good use made of the copy of the Wootton School Admission Book

Recently Peggy and Jocelyn (nee Higgs) visited the old school (Community Hall) for a trip down memory lane. They had a wonderful time finding their names in the school admissions book and enjoying the descriptions of antics in the punishment book.

Environmental Trust grant to support “Tree changers/ hobby farmers”

Our very own *Peter Dixon*, Environmental Trust Grants Director, NSW Environmental Trust recently announced \$2 million will go towards improving the land management knowledge and skills of people who have bought themselves acreage, 2-20 hectares, on the outskirts of town as a lifestyle rather than commercial decision. The project aims to foster improvements in knowledge, skill and understanding around managing small holdings and achieving positive, longer term, environmental outcomes that benefits them, their neighbours and their local environment. More detail:

<http://www.environment.nsw.gov.au/news/environmental-trust-grant-to-support-tree-changers-land-management-skills>

Bulahdelah Police Report

The NSW Police Force is currently having a firearms amnesty from 1 July to 30 September 2018. It aims to improve public safety by reducing the number of unregistered firearms and related articles in our community and provides an opportunity for any person in possession of an unregistered firearm or article to hand it in without fear of prosecution.

For more information or to surrender a firearm or related article to be destroyed contact any police station or the Firearms Registry direct on 1800 803 041.

CRC Trailer Roadshow

MidCoast Waste's mobile Community Recycling Trailer is coming to a place near by where we can drop off household quantities of: gas bottles, paint, motor oils, car batteries, household batteries, fluoro globes and cubes, smoke detectors and fire extinguishers.

Thurs 23 Aug: 9-10.30 am Old Bar Car Park (near tennis courts)

Thurs 23 Aug: 11.3—1pm, Wylie Breckenridge Park, Black Head

Thurs 20 Sep: 9-11 am Central Park, Wingham (opp library)

Next newsletter will have Nabiac and Bulahdelah dates for October



Congratulations to Ede's Real Estate in Bulahdelah for winning the 2018 Rate my Agent Winners: Agent & Agency Award

Wootton Directory contains important local contacts . Please email Caro (ed) if you know of an important contact that we should include here. Thanks.



Wootton Community Network

President: Jim O'Connor 0412963161

Secretary: Fran O'Connor

Treasurer: Leanne Wright 4997 7201

Email: brushturkey@live.com.au

Wootton Community Hall Committee

Chair/Bookings: Caro Badcock

0408 415 420

Treasurer: Marg Dobson

Topi Topi Sustainable Farming Group

Chair: Carole Robinson 0428 4009 952

Wootton Rural Fire Brigade

Captain: Mike Badcock 0409 448 330

President: Adam Garnett 0428272629

Sen Dep Captain: Craig Tate

0431644953

Karuah Great Lakes Landcare

Joel.Dunn@glcr.org.au 0401932533

MidCoast Council: 6591 7222

State Forests Wauchope 6585 3744

Police: Sector Supervisor, Bulahdelah

Senior Constable Trevor McLeod,
4997 4204, 0427233745

mcle1tre@police.nsw.gov.au

State Emergency Service 13 2500

Local Land Services

Wild dogs Wingham 6553 4233

Rural Resilience Group

Peter Brown 0437 671 459

National Parks & Wildlife

6591 0300

Tuncurry Fire Control: 6539 7700

**Bulahdelah Waste Facility
opening hours**

Tuesdays 1—5pm

Fridays 12—4pm

Sundays 10-2pm

DIRECTORY

Accommodation

Wootton Guest House

Too many visitors? 4 air conditioned bedrooms with en-suites and balconies. Reasonable rates. Contact Peter & Leanne www.woottonguesthouse.com.au
4997 7201 0407 974 420

Earth Moving/Tractor Work

David Knezevic

Excavation, demolition, auger, rock hammer, grab bucket, tipper, truck hire
4777 7402 0410 441 428

Slashing and Excavating Services

Chris Nebauer

Free quotes, all areas, no job too small or too large. 70hp 4WD tractor, heavy duty slasher or mulcher - 4.5 ton excavator with auger, bobcat, tipper.
www.slashingservices.com 0416 128 502

Property and Livestock Services

Tony Mills

Rural and domestic handyman, maintenance, repairs and other projects. All fencing. Garden maintenance, mowing, landscaping. Shearing sheep & alpacas, plus other animal husbandry tasks. Free quotes. All areas. Years of experience and skills. 0427 332 155

Real Estate

Ede's Real Estate Pty Ltd

For all your Real Estate needs Wootton, Bulahdelah and surrounding Areas
Rate my Agent Winners 2018:
Agent & Agency Award
Your LOCAL AGENT 49974566 0408492883
E: edes@edes.com.au www.edes.com.au
Remember Choosing Ede's is choosing success

Rural Valley Realty, Coolongolook

Local agent for 25 yrs. Rural specialist.
Steve Devries 0458 448 019 4997 7214

Wootton Livestock Transport

Neil Ede

For any livestock handling needs. 30 years experience.
0407 787 920

Advertising for Wootton Valley News Directory

\$50 per four line ad space (6 issues)

Renewals 1st July

These businesses support this newsletter.

Please support them wherever possible.

New advertisers welcome, contact Leanne at woottonguesthouse.com.au

Builder

Binna Burra Construction

Custom building and carpentry, servicing Smiths Lake, Pacific Palms, Wootton, Nabitac, Forster and surrounds.
www.binnaburraconstruction.com.au
Lic no. 299434C 0421 245 197

Bulahdelah Post Office

Bank@Post personal and business banking needs, passports, travel and computer needs, phones, gifts and more. Bendigo bank.
Mon-Fri 9am-5pm Ph 02 4997 4283

Health: Podiatrist

Dot Williams

Local podiatrist available for all foot care. Weekly clinics at Bulahdelah and Wingham, home-visits throughout the district.
williams.dot@gmail.com 0406 287 694

RPS Enterprises Bus Services

Paul and Renee Spiteri

Charter bus available. Will be offering day tours, travel to entertainment venues, long lunches, anything within reason for a trip.
49977149 or 0407 298 954



Wootton Valley under siege by frost!!!!

Sue and Fred's view early morning

