

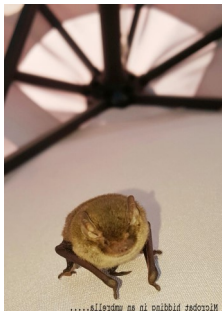
WOOTTON VALLEY NEWS

AUGUST/SEPTEMBER 2017 NO 109

DISTRIBUTION WOOTTON COOLONGLOOK
BUNGWAHL BUNYAH BULAHDELAH

Microbat (*Microchiroptera*)

Microchiroptera means "little hand-wing". They are warm-



blooded furry placental mammals nourishing their young with milk produced by the mothers. Bats share the same senses as we do in smelling, hearing, seeing and feeling, they have the added benefit of flight and an exceptional system of navigation and prey detection called echolocation. Bats are the only mammals capable of sustained flight. Their wings are hands the same as our hands, only the bones have elongated and are connected by a membrane which is made up of two layers of skin enclosing elastic fibres, blood vessels and nerves.



The left photo was a surprise find when Jim and Fran opened their umbrella!

COMMUNITY CALENDAR

Sun 6 Aug	• Wootton Fire Brigade Shed: <i>training</i> , Squires Rd, 9am
Thu 10 Aug	• Bush Regeneration Good Enough to Eat, Wootton, 9am-1pm, free
Sat 12 Aug	• Brush Turkey Café: <i>Light supper night</i> 6pm supper \$10 pp
Sat 26 Aug	• Brush Turkey Café: Slow Cook community dinner, 7pm, \$20
Sat 2 Sep	• Wootton Community Network Meeting: Brush Turkey Café, 3pm
Sun 3 Sep	• Wootton Fire Brigade Shed: <i>training</i> , Squires Rd, 9am • Brush Turkey Café: Father's Day Breakfast, 8 to 11.30 am
Fri 8 Sep	• Bus trip to Newcastle Comedy Festival
Sat 10 Sep	• Brush Turkey Café: <i>Light supper night</i> 6pm supper \$10 pp
Sat 23 Sep	• Wootton Hall Dinner: Bring a plate, \$5 pp, from 6pm
Sun 1 Oct	• Great Lakes Food Trail
	CHECK FACEBOOK FOR LAST MINUTE EVENTS


Published by Wootton Community Network Inc

Editors: Caro Badcock 0408 415 420 email: caro_badcock@bigpond.com Sylvie Riviere 0408 861 051
Join our group on Facebook: Wootton Community or email brushturkey@live.com.au

Visit our website @ www.wootton.org.au


Wootton Community Network and Hall Committee News

- **Crown Land update:** Council have approved the Wootton Trust submission. The documents have been sent to Crown Lands but haven't been acknowledged.
- **Strategic Plan update:** We received an email congratulating the Wootton community on a job well done. To date it hasn't been presented to Council.
- **Stronger Communities Grant Programme—Round 3:** is open from August 7, suggestions are to renovate the tennis building or upgrade toilets. Anyone interested in helping prepare the grant proposal please contact the editors.
- **Café:** new stove bought and installed, dishwasher has been serviced, numbers for tables are being created
- **Library:** we are looking for someone to open the library on August 6 and 27 and September 24. Can you help on one of those days—please contact the editors.
- **Hall June dinner:** apologies for cancelling due to unforeseen circumstances.



Community Working Bee

This mammoth working bee was held over a week. The main aim was to repair the paved terrace outside the café. All the damaged timber and pavers were removed, a trench was dug, formwork was installed with reo and spacers inserted on two sides, drainage pipes were laid, concrete was poured under very difficult rainy conditions. Thanks to the very patient concrete truck driver. After a few days for the concrete to dry one side of the formwork was removed, dirt was put back and compacted. Still to do is relaying the 5 rows of pavers. In addition to the team working on the trench, other teams worked in the garden, oiled the cladding, sorted the storage shed and cleaned the windows around the café and the most important fed everyone. Thanks to everyone for their time, their donations of materials, use of their machines and their good humour.








The tennis net has been fixed!



Wonderful Winter Food Swap

The **August community dinner** will be a gastronomic delight of slow-cooked high-quality and seasonal foods on 26th Aug, 7pm in the Brush Turkey Café, \$20 pp. Bookings: 0412 963 161

Also, if you are interested, there is an International "Slow food" conference 2-6 August at Tocal College, near Maitland.

<https://www.slowfoodhuntervalley.com.au/conference-in-brief/>



Bush Regeneration Good Enough to Eat Wootton, 10 Aug, 9am-1pm

Free workshop with Scott Meier of Bush & Rainforest Restoration & Consultancy, showing bush regeneration integrated with food forest development, native plant ID, care and local bush tucker species. Contact Joël on 0401 932 533 or joel.dunn@glcr.org.au for bookings.

FATHER'S DAY 3rd SEPTEMBER

ENJOY BREAKFAST AT THE BRUSH TURKEY CAFÉ

A FULL BREAKFAST WILL BE AVAILABLE FROM 8AM TO 11.30AM

Fruit, yogurt, bacon, sausages, eggs, mushrooms, tomato

Vegetarian options as well. Cost: \$15.00 pp.

Bookings: 4997 7323 or brushturkey@live.com.au

Extras available: freshly cooked scones, our famous

Lemon Myrtle cheesecake, coffee & tea



September Community Hall Spring Dinner

will be held outdoors on the tennis courts, with braziers. In addition to bringing a plate of food to share, please bring a lantern of any shape or size to add to the atmosphere. Saturday 23 Sept, 6pm, \$5 pp.



Our first **Marmalade Making Day** was held Sunday 9th July in honour Michael Bond, creator of Paddington Bear. Everyone made their own, exchanging ideas and comparing final products. We made marmalade from Seville oranges, grapefruit, bush and Meyer lemons and lime pickle and preserved lemons. The new cooking range had a good try-out. We also experimented with microwave marmalade. Everyone had a fantastic day and are looking forward to doing it again.

Wootton Rural Fire Service

The fire season is approaching! August/September/October are traditionally a very busy period for our brigade due to land holders undertaking hazard reduction burns. Fires get out of control with the high winds, dry vegetation and warming temperatures. Remember you still need to notify you neighbours and Fire Control 6539 7700 24 hrs prior to lighting the fires and you will be financially liable for any damage that the fire does if it escapes from your property: be careful, review the weather and terrain conditions on the day and surrounding days of burning .

Fire permits are officially required from October 1. It is common for this date to be brought forward. Confirm with Fire Control the need for a permit when you notify them of your intention to burn.

Training, first Sunday of the month, 9 am Fire Shed. Newcomers always welcome.



Brush Turkey Café: Current Artist

Pam Dunne trained as a primary school teacher in London majoring in art and design. She emigrated to Australia in 1977 and moved to Tuncurry to teach in 1998. Since retiring in 2006 she has returned to art, working with water colour and creative techniques. Pam's work will be on show in the Café until the end of September. Pam is also our Art Coordinator, responsible for organising art displays in the cafe.

Paul and Renee's Bus Trip from Wootton/Coolongolook to Newcastle REMINDER for the Sydney Comedy Festival Showcase 8 September

The Sydney Comedy Festival Showcase will be tearing up the freeways of Australia for the fifth year in a row to bring the crème de la crème of the 2017 Festival. The showcase will feature some of the Festival's hottest acts live on stage for an incredible two hours of hard hitting laughter. Boasting a line-up of the best local and international comics and showcasing some of the freshest emerging talents, this jam packed night of pure entertainment will leave you sore from belly laughs! Contact Paul: 4997 7149 or 0407 298 954



Wild Dog Update

A recent article in the Great Lakes Advocate provided information on the progress of wild dog control programs in the Great Lakes area. Landholders and government agencies are making inroads into reducing wild dog populations in the Bulahdelah area with 57 dogs shot or trapped this year. The aim is to cull around 70 per cent of wild dog populations each year. More landholders need to gain trapping skills so there is a balance of control methods in our tool-kit to tackle these cunning pests and to participate in a joint effort, rather than tackle the problem on our own. Around 90 landholders are actively involved in culling dogs in the Bulahdelah district working in small clusters with neighbouring properties. Contact: Laurie Mullen on 0407 785 007

Great Lakes Food Trail (GLFT) update

- The Brush Turkey Café opened for the June Trail. Thanks to all the hard work of the volunteers for a very successful and well organised day.
- The core values of the producers and participants of the GLFT are **REAL FOOD**:
 - Regenerative farming that builds and maintains soil health
 - Environmentally, economically and socially sustainable
 - Animals that are pasture raised on paddocks
 - Low stress stock handling practices
 - Free to range animals that can forage with their flock or herd
 - Open and transparent communication with the community
 - Organic farming principles, processes and practices
 - Diversity that develops healthy ecosystems
- Participants for the next Trail on 1st October are - **Bulahdelah**: Lucy Land and Merino Farm, Old Inn Road Vineyard, Men's Shed and Bee Hive; **Wootton**: Brush Turkey Café, Great Lakes Paddocks; **Bungwahl**: Topi Open Range (plus Chef Sarah, Little Creek Farm, Nadine The Cake Queen, Palms Micro Bakery and The Natural Deodorant), Burraduc Buffalo Dairy and Artisan Cheeses (plus Kingfisher Café); **Tarback Bay**: Tianjara Eco Home and Garden; **Charlotte Bay**: Garden to Table Permaculture; **Blueys Beach**: Kingfisher Café



Did you know?

While the Nabitac Market is on, just on the other side of the oval there is an auction of household goods and farm equipment from 9am prior to a cattle auction at 12pm run by Gooch Agencies. It is a fun way to start the day!



Do you produce livestock for food production (eg cattle, goats, sheep)?

There are major changes to the National Vendor Declaration (NVD) process including a strengthening of the accreditation requirement. Details can be found at <https://www.mla.com.au/meat-safety-and-traceability/red-meat-integrity-system/about-the-livestock-production-assurance-program/lpa-accreditation-and-recommitment/>

You will

- pay a Livestock Production Assurance (LPA) accreditation fee from 1Oct2017 .
- complete a short assessment every three years when you renew
- complete on-line learning if you are setting up new accreditation
- not be able to access the LPA NVD and supply chains may not accept your livestock or may pay a reduced price for it if you are not accredited.

Topi Topi Sustainable Farming Group

July field trip to Islands in the Stream Biocast, home of Lee Fieldhouse a Vermiculturist, Industrial Ecologist and Chief Worm Wrangler. We learnt about the whole process of getting from waste product to the fully finished Biocast+. A far more complex biological system than simple worm wee from your home worm farm.



Great Lakes Soil Health Group – Lime orchard visit in June

We visited Mike Coventry's lime orchard at Wootton and discussed its establishment and maintenance, with a focus on recent fertiliser inputs including chemical, organic and mineral. We carried out rapid soil assessments, practicing knowing our soils, used refractometers to estimate sugar levels in plant sap, and



and response to fertilisers.

KGLL has Brix scale refractometers available to members for only \$50.



Mid-year KGLL Membership Offer: FREE membership for the remainder of 2017
Contact Joël on 0401 932 533.

Advanced Care Planning (ACP) Talk 22 October, 3 pm, Wootton Community Hall

Learn what it is and what it isn't.

Advance Care Planning involves you **Thinking** about your future health care wishes, **Talking** with family and friends, then **Sharing** your plan by documenting what you may or may not want. Ideally, the plan will include the appointment of a substitute decision maker. You can also discuss the process with your doctor or other health professionals. It enables **you** to **take control** of your future health care and treatment when you are not able to communicate your wishes. **If your choices for future health care are known, they can be respected.** An Advance Care Plan is used only when you have lost the capacity to speak for yourself.

The talk will be presented by **Peter Dunne**, a Wootton resident and Registered Nurse working in the Aged Care field. He has over 40 years of experience in caring for people in many different settings, and has seen what happens to individuals and their families when there is no plan and a crisis develops. Peter has experience as an Advance Care Planning Facilitator and has knowledge of resources that can be helpful when planning ahead.

FOR SALE

MOVING SALE: Outdoor settings, dingy, farm equipment. Kubota ride-on mower, BBQ, white goods, household goods etc Ring after 15th August 0423347726

1998 model Toyota Camry

6 months rego, 321282 kms, 4 new tyres, heavy duty suspension, roof racks, towbar



\$2900.00

Phone: 0422 416 691

Pride Pathfinder 10 electric mobility scooter

Just serviced, new batteries, computerised charger. As new

ONO \$2,100

Peter: 0407 974 420



Brian Eric Brown 1935-2017. Brian was a very well known local figure as he moved to Wootton in the '70s with early retirement and a return to the country he loved. He moved away in '94 to return in 2007 where he continued to enjoy Wootton life with his trusted companion Max.

*** REMEMBER TO CHECK FACEBOOK FOR LAST MINUTE EVENTS ***
 *** REMEMBER TO READ THE ON-LINE NEWSLETTER TO SEE LARGER PHOTOS ***

Wootton Directory contains important local contacts . Please email Caro (ed) if you know of an important contact that we should include here. Thanks.



Wootton Community Network

President: Jim O'Connor 0412963161
 Secretary: Fran O'Connor
 Treasurer: Leanne Wright 4997 7201
 Email: brushturkey@live.com.au

Wootton Community Hall Committee

Chair/Bookings: Caro Badcock
 0408 415 420

Wootton Preventive Health Clinic

Osteopath, Jenna Norrie 0488 520 456
 Podiatrist, Dot Williams 0406 287 694

Topi Topi Sustainable Farming Group

Chair: Sue Williams 0438 433 063

Wootton Rural Fire Brigade

Captain: Mike Badcock 0409 448 330
 President: Adam Garnett 0428272629
 Sen Dep Captain: Craig Tate
 0431644953

Karuah Great Lakes Landcare

Joel.Dunn@glcr.org.au 0401932533

MidCoast Council: 6591 7222

Police

Senior Constable Trevor McLeod,
 Sector Supervisor, Bulahdelah
 4997 4204 0427233745

State Emergency Service 13 2500

Local Land Services (Wild dogs)
 Wingham 6553 4233

State Forests Wauchope 6585 3744

National Parks & Wildlife

6591 0300

Tuncurry Fire Control: 6539 7700

Bulahdelah Waste Facility

opening hours

Tuesdays 1—5pm

Fridays 12—4pm

Sundays 10-2pm

DIRECTORY

Accommodation

Wootton Guest House

Too many visitors? 4 air conditioned bedrooms with en-suites and balconies. Reasonable rates. Contact Peter & Leanne
www.woottonguesthouse.com.au
4997 7201 0407 974 420

Earth Moving/Tractor Work

David Knezevic

Excavation, demolition, auger, rock hammer, grab bucket, tipper, truck hire
4777 7402 0410 441 428

Slashing and Excavating Services

Chris Nebauer

Free quotes, all areas, no job too small or too large. 70hp 4WD tractor, heavy duty slasher or mulcher - 4.5 ton excavator with auger, bobcat, tipper.
www.slashingservices.com 0416 128 502

Property and Livestock Services

Tony Mills

Rural and domestic handyman, maintenance, repairs and other projects. All fencing. Garden maintenance, mowing, landscaping. Shearing sheep & alpacas, plus other animal husbandry tasks. Free quotes. All areas. Years of experience and skills. 0427 332 155

Wootton Livestock Transport

Neil Ede

For any livestock handling needs. 30 years experience. 0407 787 920

Quality Silage Feed

Round bales of silage for sale \$88.00 (inc GST). No order too small or large. Delivery can be arranged.
Coolongolook. 0484 627 852

Plumber

Richard Green Plumbing

All plumbing, drainage, gas and LPG fitting, metal roofing (domestic, commercial, industrial)
Lic no. 53903C 6 559 1555 0418 618 583

Advertising for Wootton Valley News Directory \$50 per four line ad space (6 issues)

Renewals 1st July

These businesses support this newsletter.

Please support them wherever possible.

**New advertisers welcome, contact Leanne at
woottonguesthouse.com.au**

Builder

Binna Burra Construction

Custom building and carpentry, servicing Smiths Lake, Pacific Palms, Wootton, Nabiac, Forster and surrounds.
www.binnaburraconstruction.com.au
Lic no. 299434C 0421 245 197

Real Estate

Great Lakes Realty

Comprehensive range of properties
info@greatlakesrealty.com.au 4997 8200

Edes Real Estate Pty Ltd

Stock and Station agent and property management www.edes.com.au
Brian Ede 49974566 0408 492 883

Rural Valley Realty, Coolongolook

Local agent for 25 yrs. Rural specialist.
Steve Devries 0458 448 019 4997 7214

Bulahdelah Post Office

Bank@Post personal and business.
Bendigo bank. Opal cards, Phones and gifts
Mon-Fri 9am-5pm and most Sat 9am-12noon
Ph/Fax 4997 4283

Health: Podiatrist

Dot Williams

Local podiatrist available for all foot care. Weekly clinics at Bulahdelah and Wingham, home-visits throughout the district.
williams.dot@gmail.com 0406 287 694

RPS Enterprises Bus Services

Paul and Renee Spiteri

Charter bus available. Will be offering day tours, travel to entertainment venues, long lunches, anything within reason for a trip.
49977149 or 0407 298 954