

WOOTTON VALLEY NEWS

AUGUST 2006 NO 43

DISTRIBUTION 400 WOOTTON COOLONGLOOK
BUNGWAHL BUNYAH BULAHDELAH

Crested Pigeon *Ocyphaps lophotes*

A stocky pigeon with a conspicuous thin black crest, with plumage grey-brown, pink underparts, wings barred black, with glossy green and purple patches, head grey, with a pinkish-red ring around the eye. If startled, this pigeon takes to the air with a characteristic whistling sound, and glides with down turned wings. The sound is produced by the air passing over a modified primary feather on the wing. Upon landing, the pigeon swings its tail high in the air. It is a common sight in our area. They feed in small to large groups mostly on native seeds as well as some leaves and insects. They also congregate to drink at waterholes. Birds arrive somewhat nervously in nearby trees, and often sit for long periods before descending to drink. Crested Pigeons may breed at any time of the year, but mostly from September to March. The nest is a delicate structure of twigs, placed in a tree or dense bush. Both sexes share the incubation of the two eggs, and both care for the young. The young birds hatch after about three weeks and leave the nest after a further three weeks.



COMMUNITY CALENDAR

| | | |
|--------------------------|--|------------------------------|
| Wednesday 9th August | Bulahdelah Music Night 7pm | Bulahdelah Bowling Club |
| Fri/Sat 19th/20th August | Car Rally | Wootton & Bulahdelah Forests |
| Tuesday 22nd August | Closing date for Native Forestry submissions | |
| Saturday 26th August | Community Dinner - Japanese - | Brush Turkey Café 7pm |
| Sunday 3rd September | Fathers' Day Breakfast 8.30am | Brush Turkey Cafe |
| Sunday 17th September | 'Memories of Wootton' Wootton Hall | 10am |
| Saturday 23rd September | Giant Spring Garage Sale 9am | Brush Turkey Cafe |
| Saturday 23rd September | Closing date for Marine Park submissions | |
| Saturday 30th September | Community Dinner - Fondue - | Brush Turkey Café 7pm |

Published by Wootton Community Network Inc
Editors Bronwyn Little 49977185 and Pat Tate 49977292
Email Address: wcnbrushturkey@hotmail.com Phone: 49977296

Wootton Community News

Open Garden Grant We have recently applied for a grant to redesign and construct our permaculture kitchen garden. We have formed a gardening group to implement our new design. If you have an interest in gardening, or would like to learn, contact Garry Williams on 49977167 or leave your name at the café.

Mutual Obligation We are now registered with Centrelink which means their clients can fulfil their required hours at the Centre. Contact 49977185.

Website If you have website design experience and can help us design a website for the Wootton Community Network and the Café, please contact us.

Wootton Postcards We are in the process of producing postcards for our area that will be on sale at the Brush Turkey Café. Thanks to Ian Dihm for his photography and Wayne Ellis for his work. If you have any great photos that particularly depict the essence of Wootton, or have an old classic photo, please contact Wayne on 65 545009 on call in at the café.

Giant Spring Garage Sale Saturday 23rd September 9am

We are hoping to make this our major fundraiser for the year. So please, all you Woottonites donate and recycle your preloved goods in a worthy cause to keep our Centre running, fund further projects (such as 'welcoming' signs for the town and signage for the Railway Walk) and help pay for this newsletter. Book a stall for \$10 and sell your own stuff and make extra cash and have a fun day. All stall-holders will receive a free coffee.

Annual General Meeting The new office bearers are:
President - Garry Williams Vice President - Pat Tate
Secretary - Bronwyn Little Treasurer and Public Officer - Jean Price
Committee Members - Wayne Ellis, Kevin Price, Dulcie Joester, Geoff Williams
Art Co-ordinator - Wayne Ellis

New Artwork on Display

The new featured artist for August/September is Christopher Rigley from Topi Topi. His exhibition is largely nature based. He has a passion for printmaking, enjoying its versatility of effects and the combination of physical, mechanical and creative techniques. His approach is decorative so you're sure to enjoy this exhibition. All works are for sale.

Café News

WANTED CASUAL HOURS NO PAY

The Brush Turkey Café has now been open for over two years. During that time a tireless group of workers have worked to improve and enhance the facilities. The café is a community initiative built by the community and manned by the community, all on a voluntary basis. Assistance is **desperately** needed in the café. We need more **COOKS** (*it's not difficult*) to enable us to keep the café open. We need more/your community help/spirit if this facility is to stay open in the long term. Can you spare a few hours per month to share the load and ease the burden of our overstretched volunteers.

Thanks to Kevin & Jean for doing a fantastic job in covering our café chairs.

Our Xmas in July dinner was a roaring success with everyone enjoying a traditional Xmas meal, presents from Santa, trivia quizzes and much laughter was had by all. Leanne & Peter won best dressed.

Fathers' Day Breakfast is on again on Sunday 3rd September at 8.30am. Come along and treat your Dad, young and old, to a BIG BREAKFAST. \$12 Adults and \$5 Children

Flowers are needed to brighten up the café. If you have anything growing that we can put in a vase please drop off at the café. Our flowers are a bit sparse at the moment.



MONTHLY COMMUNITY DINNER Japanese Cuisine
Brush Turkey Café Saturday 26th August at 7pm
Book early on 49977296 to enjoy the fun and the feast.

'Memories of Wootton'

Sunday 17th September 10am Wootton Hall
If you have any stories, photos or memories about Wootton that can be documented onto a DVD for future generations, then put this date in your diary. Food and drink will be provided. Please contact Jack Squires 49977132 for more information



Bulahdelah Music Night at The Bowling Club Wednesday 9th August 7pm Free

Open microphone night, so bring your instruments and have a bash. A couple of folks have said they'd like to bring their poems ...please do. Those of you who were there last month will remember Peter Kershaw's humorous verse about "The Meeting"... wonderful stuff.

The Bowling Club is a great venue for music with really warm acoustics.

We are very lucky to have such a good room in town.

Contact Trevor Knight 49974597 or 0414903237



Cheers Rd ⇨ Squires Rd ⇨ Cheers Rd ⇨ Squires Rd

Further to our last article on Squires/Cheers Road, the residents of these roads have since received yet another letter from Council advising them that the road will remain as Squires Rd so as to reduce the necessity for changes of official address notification
Let's hope that this is the final decision!!!

Thankyou to the Coolonglook Public School for the continued use of their photocopier in producing The Wootton Valley News, at an affordable rate.

Advertising rates for 2006 are \$33 for Non-members, \$27.50 Members - per ad space These businesses support this newsletter.
Please support them wherever possible.

DEADLINE FOR NEXT ISSUE IS 30TH SEPTEMBER 2006
WE WELCOME CONTRIBUTIONS & FEEDBACK
What's happening in your neck of the woods? Contact the editors.

Wootton Rural Fire Services

The brigade has attended a number of whisky grass fires, lit by property owners, not realizing that the recent rains have little affect on the speed with which a fire will move through this type of grass. Again, we are grateful to our colleagues in the Bulahdelah

brigade for their assistance in these fires. A reminder that it is the landholder's responsibility to advise Fire Control and their neighbours when lighting a fire and any loss caused by that fire is the landholder's responsibility. Fire Control contact number is 65 555782. The next meeting of the Wootton brigade is on Sunday 20th August at 9am. Please consider joining the brigade.



Garry Williams driving the Wootton tanker



Daryl Buchanan, Craig Tate & Colin MacCallum after extinguishing a recent grass fire in Wootton

Draft Code of Practice: Private Native Forestry

Private native forestry is the sustainable logging of native vegetation on private property. Under the Native Vegetation Act 2003 (NV Act), harvesting of timber for the purposes of private native forestry will require approval through the preparation of a Property Vegetation Plan (PVP) or through an application for development consent. This will require harvesting operations to be carried out in a way that ensures environmental outcomes are improved or maintained. Further information and copies of the draft code, the Listed Species Ecological Prescriptions, private native forestry information sheets and other helpful information:

Phone: DNR Information Centre on (02) 9228 6333 or Freecall 1300 305 695

Email: pnf@dnr.nsw.gov.au

Contact: Department of Natural Resources: 98 Victoria Street Taree or PO Box 440 Taree 2430 Phone:6552 2788 or 6552 2816

Members of the public are invited to make submissions on the proposal. The closing date for submissions is Tuesday 22 August 2006 . Written submissions should be sent to:

Post: Private Native Forestry, Department of Natural Resources, GPO Box 39 , Sydney 2001

In person: DNR Information Centre, 23-33 Bridge Street , Sydney

Email: pnf@dnr.nsw.gov.au

Draft Zoning Plan Regulation for the Port Stephens **Great Lakes Marine Park**

In order that all members of the community have an opportunity to participate in the planning process for the marine park, the Authority invites comment on the Draft Regulation (draft zoning plan) as required under section 16 of the Marine Parks Act 1997.

Meetings for commercial operators and tourism to discuss the Draft Zoning Plan Regulation for the Port Stephens - Great Lakes Marine Park and the northern end of the marine park will be held at Pacific Palms Community Hall, The Lakesway, Pacific Palms on Wednesday 9th August 9am-8pm.

This will be focus group session to get specific feedback on the draft zoning plan from a variety of commercial operators and tourism-related businesses.

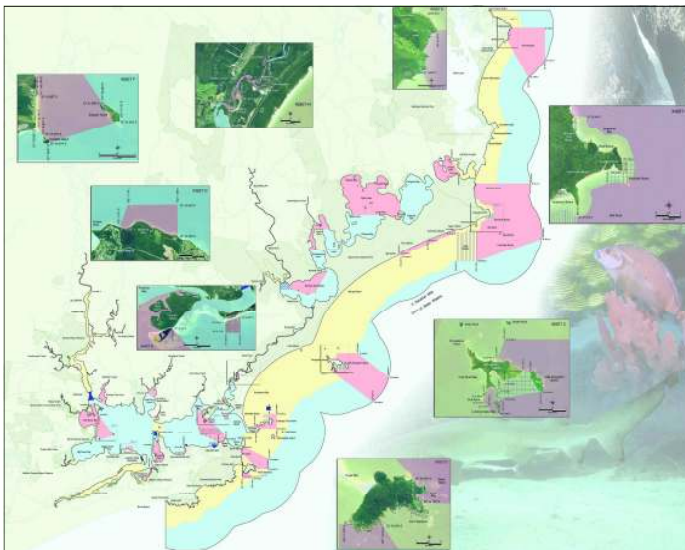
Copies of the Draft Regulation (draft zoning plan) and marine park zoning and submission brochure may be obtained from a variety of locations including all Fisheries, National Parks and Wildlife, and NSW Maritime offices, as well as Council Chambers and visitor information centres, and from the website www.mpa.nsw.gov.au and are available at the Brush Turkey Café.

The closing date for submissions on the draft documents is 23 September 2006.

Please RSVP to Samantha Hessey on 02 4916 3827, or by email to

Samantha.Hessey@dpi.nsw.gov.au .

Should you require any further information about the Port Stephens – Great Lakes Marine Park or the upcoming focus group meetings, contact Polly Blyden at the marine park office on 02 4916 3970



Game Hunting in Local State Forests Begins!!

Game hunting is now allowed on 'declared public land'. This means State forests or Crown Land areas officially declared under the Game and Feral Animal Control Act 2002 for hunting feral animals. It **does not** include National Parks. Conservation hunting is using licensed hunters to help reduce the impact of introduced species such as feral pigs, goats and foxes on our native plants and animals. Conservation hunting commenced on March 2006 by accredited, licensed hunters on about 450,000 ha of State forest land including our local Wang Wauk State Forest. Another 1.2 million ha is under consideration. Only trained and accredited hunters who are members of a Game Council Approved Hunting Organisation (AHO) may apply for a special licence to hunt on these areas. A hunter code of practice (including provisions for animal welfare, safety and trespass) is a condition of licence.

To find out what forests are declared for hunting visit www.gamecouncil.nsw.gov.au or phone your local State forest (Bulahdelah office 49974206) or Department of Lands office.

Will forests be closed while hunting takes place?

No, like other states, licensed hunters and forest users will coexist. Hunting will not take place at night unless under special circumstances and all hunters will be easily identifiable as they must wear an article of blaze orange clothing.

Will it be safe for other forest users?

Public safety is paramount and each proposed declared forest area has been subject to international best-practice risk analysis. Responsible hunters must carry maps identifying boundaries, camp sites, roads and exclusion zones for forestry work areas. Feral animal control by accredited, licensed hunters will generally take place in the more remote areas of the forest.

How can licensed hunters access declared public land?

Licensed hunters must have written permission for hunting on declared public land areas. This can be obtained through a computerised booking system which tightly controls and monitors hunter access.

What feral animals can be hunted?

While hunting on declared public land, licensed and accredited hunters may only assist in the control of introduced species of feral animals such as pigs, goats, foxes, rabbits, wild deer, cats, wild dogs and hares.

Reporting illegal activity: Game Council NSW fully supports and encourages the reporting of illegal or suspicious criminal activities to NSW Police on 1800 333 000, or contact your local Rural Crime Investigator.

Information sourced from www.forest.nsw.gov.au Cont. next page

Cont'd from page 6

A local resident whose property borders the State Forest was recently concerned when she discovered her letter box had two bullet holes through it. Upon ringing State Forests she was told they "would note it on their records, no-one at that time had registered for shooting in that area". Let's hope this new legislation does not lead to indiscriminate shooting in our area.

Coolonglook School News

We will be participating in a debate against Bobin Public School at Bobin on Wednesday 9th August. The topic will be 'Homework is Useless'.

The 'Small Schools Sports Carnival' was held at Tuncurry and all enjoyed the day in a spirit of good sportsmanship.

Coolonglook School Major Fundraiser for 2006 Search for a Star

We are calling for people to participate in acts, dress up as your favourite star, pick a song (individual or a group) in karaoke. Already entered are Tina Turner, Blues Bros, Tom Jones and a tap dancing Brumby. No date has yet been set. Contact Wendi on 65591522 or Bob at the shop on 49977225.

We are calling for new students for next year to boost our numbers.

At present we have 31 students enrolled.

We have just completed the Basic Skills Test in Writing and Mathematics.

Our gardens and grounds are looking wonderful due to the voluntary work of Colleen Tomlinson.

Peter Mason Principal



Boolambayte Creek Church Open House

Arrive 10am Sunday mornings, families welcome, come for a lunch to share, relax with fun activities for kids. Entrance opposite Forest Lodge on the Wootton Way.

Contact Dave and Kathy Barker 49974675

Courses/Tuition

Yoga classes are held 6pm Mondays at Bulahdelah RSL Hall and Wednesdays at Wootton Hall Call Peter on 49977201

For Sale

- ◆ Lemon Myrtle Cheesecake \$25 only made to order.
To order in advance Ph Bronwyn 49977185
- ◆ Pottery by Rose Maher at the Brush Turkey Café
- ◆ Ride-on Lawnmower Cox 11hp 32" cut \$1,000 ono
Geoff Williams 49977404

Wanted

Industrial sewing machine Phone Peter 49977476

Flowers for the Brush Turkey Café on weekends. Ph 49977296

DIRECTORY

Air Conditioning

Repairs, sales, installation. Domestic and commercial. Mark Tidbury Lic no 123069C

0427500329 49977308

Building & Maintenance Contractor

Solutions to building problems Lic 631C

Rob McDougall 0427 955958 49977335

Building

Ecocollective, architecture, construction, landscapes. Specialising in unique energy efficient homes Lic no. 7089 Call Ian

49879184

Limestone, one of the greatest building products ever! Also made to order furniture -tables & fireplace surrounds a speciality.

Paul Shipton 49977256

Café

Brush Turkey Café

'Food Without Fumes' Wootton 49977296

Conveyancing (Local)

Buying/Selling rural, residential, strata property; small businesses; retail & commercial leases.

Lesley Cameron 6557 5263 0405 265 341

Electrical Contractor

STS Services P/L Lic 27928C

Garry Williams 49977167 0417369670

Earth Mover

Excavation, demolition, auger, rock hammer, grab bucket, tipper truck hire

David Knezevic 49977402 0410 441428

Excavations

Dwelling sites prepared, road constructions, property drainage and dams, light clearing, tipper and grader hire, sand and gravel supplies. Wootton

Earthmoving 49977327 0427740990

Horses GEMBIRAS DOCS ONYX

DUAL SIRE REGISTERED STALLION

AQHA-A17174 ASH-SM133207

Standing at stud: progeny usually for sale.

Gembira Horses 49977335 0419201913

Ice Cream

Roscoe's Ice Cream Trade enquires welcome

49977351

Motor Repairs (small) & Equipment Hire Geoff

Lawn mowers and chainsaws etc. Mower hire all

sizes and Trench digger 49977404 0418482099

Massage

Healing Hands Therapy by Qualified Practitioners Therapeutic & Remedial Massage, Trigger point therapy, Day Spa treatments-facials, body exfoliations & wraps using 100% natural & organic handmade products. Skincare range & gift vouchers.

Energetic Healing Chakra balancing, energetic acupuncture. Treating a wide range of emotional & physical illnesses. Healing sessions compliment traditional medical treatments.

See also www.acuenergetics.com

Kerry Bromage & Dave Flakelar Ph 49977320

Naturopath/Nutritionist/Herbalist ATMS

Improve your health naturally Judy Harland

49974472 0415 788356

Paving Down to Earth Paving - Patios, paths, driveways, brick edging Lic no 37348C

Walter Hacene 49977344

Plumber Richard Green Plumbing

All plumbing, drainage, gas fitting, LPG gas fitting, domestic, commercial, industrial

Lic no 53903C 0418 618383 65591555

Real Estate

Rural Valley Realty - Your local real estate agent servicing Bulahdelah to Nabadah

Steve Devries 49977214

Edes Real Estate Pty Ltd - Stock & Station Agent & Property Management Brian Ede www.edes.com.au

49974566 49977180(A/H) 0408492883

Removals

Dave Barker Removals "Moving with Care" 49974675

Signs Hand painted signs and vinyl lettering, shopfronts, vehicles, boats, windows, light boxes, 3D models, promotional displays

Bruce Peachey 0438235057

Slashing & Noxious Weed Spraying

Local area, reasonable rates.

Scott Gordon 49977401 0408259183

Tree Climber/lopper-experienced

Cut and leave jobs required, firewood split

Reasonable rates Garth J Muxlow 49977314

Trencher & Mobile Crane/Borer Hire

MRM Specializing in trenching for underground services & power pole replacement

Mick 0408669105

Water Brown's Water Carrier

Domestic, rural & all your water requirements

Pete & Smiley 0429 802 282 6550 2282