

**WOOTTON
VALLEY
NEWS**

APRIL - MAY 2012 NO 77

DISTRIBUTION 450 WOOTTON COOLONGLOOK
BUNGWAHL BUNYAH BULAHDELAH

Five - Leaf Water Vine

Cissus hypoglauca

This vine can be recognized by its alternate, compound leaves, each made up of 5 stalked leaflets coming from one point (like a hand). Each leaflet is rounded at the base, pointed at the tip, and the underside is bluish to ash grey. The edges are either smooth, or with small teeth, especially in younger foliage. Young plants may have only 3 leaflets in each leaf. The vine climbs by tendrils, which come off the stem opposite the leaves. The small, yellow flowers occur in clusters in the summer. The globular, black berries (1.5 cm across) ripen in the autumn. Under good conditions, Five-leaf Water Vine can be a tall, vigorous climber. It can be propagated either from cuttings or from fresh seed, which takes 1-2 months to germinate. After all the rain we've had you can see it climbing up the trees, especially in the creek lines and rainforest area.



COMMUNITY CALENDAR

Sunday 1st April	Wootton Fire Brigade Training Day 2pm
Saturday 14th April	WORKING BEE 9am Wootton Hall & Centre
Saturday 14th April	Movie & Supper Night 6pm Brush Turkey Cafe
Saturday 28th April	Community Dinner 'New Zealand theme' 7pm Cafe
Sunday 6th May	Wootton Fire Brigade Training Day 2pm
Sunday 20th May	Wootton Fire Brigade Meeting and A.G.M. 1pm
Saturday 26th May	Community Dinner Curry Night 7pm Brush Turkey Cafe

Published by Wootton Community Network Inc
Editors Pat Tate 49977292 and Caro Badcock 49977337

Phone: 49977296 brushturkey@live.com.au Visit our website @ www.wootton.org.au

**Working Bee Saturday 14th April
9am onwards. Lunch provided.**

Anyone is welcome to a working bee at the Wootton Centre and Hall. Your help would be very much appreciated.
Come for an hour or all day.

**Wootton Community Network
Community Dinners**

The Chinese dinner in February was very popular, some dressing in Chinese attire for the occasion. Thanks again to all the cooks, Dulcie, Leanne, Jim, Fran, Pat and John (everyone enjoyed your special fried rice!) Also thanks to everyone who helped set up and clean up (thanks Pam for spending so much time at the kitchen sink).

The March dinner, organised by the Hall Committee, is a 'bring a plate' in the hall. All proceeds (\$5 per person) will go towards hall maintenance.

In April we are attempting a New Zealand *hangi!* If you would like to help with this or have any first hand ideas or experience contact Jim, 49977323
Please book at the cafe or leave a message on 49977296 or email.

May Dinner will be our regular Curry Night (If you would like to make a curry please let Pat know on 49977292).

Cafe news

The training day and meeting afterwards were well attended with the enlistment of a few more volunteers and some ideas for attracting more, especially teenagers. We have had quite a few teenagers train at the cafe over the years and they have all gone on to paid employment in other cafes. The general consensus of the meeting was that the cafe was a valuable community resource and that we should try to keep it running on Sundays. A facebook page has been created, details in next newsletter.

**The Brush Turkey Cafe will be closed for
June and July this year, for Winter.**

**Come along and look at the art at
the Brush Turkey Community
Café**

Louise Green was born in Newcastle and has lived on the Mid North Coast since 1992. She is known as an equine artist and has painted horses since she was three. She works in pastels and oils and has won over 70 awards, selling paintings all over the world. Her paintings are well worth a look, especially if you are a horse fan.





*Supper and Movie Night
Saturday 14th April
6pm Mexican Supper,
7pm movie \$10
Brush Turkey Café
Wootton Way Wootton*

**A Mexican Comedy
"Salvando al soldado Perez"**

A Mexican crime lord is forced by his mother to plan a suicidal rescue mission to find his lost brother in the most unexpected place on Earth...

Cafe visited by the Hunter Valley Farm Machinery Group

Wootton was awash with old tractors in early March when they came for lunch at the cafe. They are an eccentric bunch, restoring and driving old tractors through the forest tracks. Driving from Markwell to Wootton they were a sight to see when they arrived in convoy. After enjoying their lunch and saying they would definitely be back, they took off down Wootton Way on their way home.



Wootton Hall Happenings

By the time you get this newsletter we will have had the first Bring-a-plate quarterly dinner in the Hall. Hope you all enjoyed it and spread the word for future dinners. Don't forget, we are on the look-out for photos or memorabilia of Wootton School, and the Wootton area in the past, so as to start up a historic display in the Hall, and any unwanted good quality crockery, glasses or cutlery to add to the kitchen collection. If you have anything just leave on the Hall verandah and let Caro know.

Bookings, donations contact Caro Badcock 49977337 caro_badcock@bigpond.com

Great Lakes Catchment Management (GLCM) Group

It is our goal to promote sustainable use of land, water, vegetation, soil and other natural resources.

The February meeting was held locally, here at the Wootton Hall. The day was supposed to start off with a visit to the corner of Possum Pie and Elmar Roads where the Wootton Weeders have been busy. Unfortunately due to the weather this ended up not eventuating (see later in the newsletter) and interested locals and members of the GLCM met at the hall for a discussion of what has been achieved there and the perils of privet, how to manage it etc by Isabelle Strachan, GLC. Morning tea was then had by all before moving into an open session with landholders where the Agency representatives introduced themselves, described their roles in the GLCM Group and what current activities their agencies were involved in. Landholders were encouraged to raise relevant issues for the Wootton Topi Topi areas. Topics included local weeds such as privet, of course, giant Parramatta grass and the aquatic weed, cabombah. The DPI provides an AgNote on aquatic weeds at



http://www.dpi.nsw.gov.au/_data/assets/pdf_file/0020/256403/Aquatic-weed-management-in-waterways-and-dams.pdf and information about giant Parramatta grass at <http://www.northcoastweeds.org.au/weed/giant-parramatta-grass/>. There was also discussion about the bush area to the west of the hall and possible steps that should be undertaken to make the area more pleasant for the village. The landholders were invited to join the group for a light lunch and to continue discussions with the various agency representatives if required.

The closed afternoon session then proceeded according to the standard agenda. The major issue of the day was the unfolding blue-green algae situation in the Bombah Broadwater as a result of the incessant rain and concern that a precautionary fishing closure may need to be extended. Luckily this did not eventuate. Details can be found at the following website: <http://www.water.nsw.gov.au/Water-Management/Water-quality/Algal-information/Hunter-Regional-Algal-Coordinating-Committee/Hunter-Regional-Algal-Coordinating-Committee/default.aspx>
Caro Badcock Chair, Community Rep



Bonjour,

This is the wild dog (more a wild dog than a dingo!) prowling on our property.

Definitely looking for food, looking so thin..... Sylvie.

The Wootton Weeders were visited by the Great Lakes Catchment Management Group on Wednesday 8th February 2012. Unfortunately Wootton had received a lot of rain the day prior to the meeting, the bridge in Possum Pie Road was flooded with the water rising and the visitors thought it best not to attempt a crossing. They had come to have a look at the efforts of the Wootton Weeders on the corner of Possum Pie Road and Elmar Road.

This small area had been cleared of privet trees of all shapes and sizes over a period of many months by about eight or so dedicated workers who all live in close proximity to this corner. We planned on making it a picnic corner and had been provided with a picnic table from the Great Lakes Council. This table was sanded down and repainted by some Weeders before being placed on the corner. Since the area has been cleared periodic checks have been made to ensure no regrowth of privet was happening and to further weed out moth vine which was the next biggest nuisance. Five local native trees have been planted and maintained and all seem to be quite healthy. Other native trees are beginning to flourish along the creek bank now that they are no longer hampered by overcrowding privet. The cleared area has been whippersnipped several times but mowing it would be a much better option so that this lovely little corner could be comfortably used as a picnic area. The Wootton Weeders had a picnic meeting on this corner some time ago and all who came had an enjoyable time just taking in the view of the creek and surrounding native trees as we planned our next weeding day.

It would have been a proud moment to explain our work and show our efforts to the Catchment Management Group. Maybe another time. Judy H on behalf of the Wootton Weeders.

Wootton Rural Fire Brigade

Winter time is about to arrive, this means that the type of fires that your brigade attends changes from mainly bush fires to fires involving your house. There have been 4 house fires that your brigade has attended in the last couple of years, don't let your house or shed be next! Chimneys, candles, heaters (gas & electric), open fires and old electrical wiring seem to be the main reason for winter house fires.

Please check your chimneys, be careful when using candles, don't leave fires on unattended etc.

The Brigade has training once a month on the first Sunday of each month the next being Sunday 1 April at 2.00pm. Also the brigade's meetings are held on the 3rd Sunday of every second month; the next being on Sunday 20 May at 1.00pm, which is also the A.G.M.

Contact Mike Badcock (Captain) on 49977337 or any of our members for membership, training details.

What brought YOU to Wootton?

One foggy morning as the sun cracked the sky like a giant sunny side up egg, we turned off the Lakes Way onto a dusty side road. As we wound our way up hill and down dale this bumpy road seemed to go on forever. Km's more and we finally made Wootton. Little did we know that 3 ½ years later, that same dusty, bumpy road would be a commute we would make several times a day, taking our son Jhet to the school bus on the Lakes Way.



It was in 2007, after we had both spent years working and travelling internationally in the Theatre and Entertainment Industry and having recently started a family and a new home based business that we made the life altering decision to flee “the big smoke” (Sydney). Becoming parents and starting ‘blossom eco skin care’ changed our priorities and we sought a tree change, somewhere from which we could run our Organic Skin Care manufacturing business, have horses, animals, a garden and importantly a house that had grass all around, where you don’t hear the neighbours flush their loo. These things I was most accustomed to growing up in NZ and Grant too, having spent his teenage years in the country. Our brief for property was somewhere a commutable distance from Sydney, secluded but not isolated, undulating, lush, green, plenty of water, and close to the coast. After visiting friends who had recently moved to the Mid Nth Coast and viewing a handful of properties, nothing just right, Grant remembered somewhere he thought of as picturesque all those years ago when commuting from his family’s horse stud/cattle property at Taylors Arm. That’s right, a little town called Wootton! So on returning to Sydney and hopping on the internet, finding a property to view, then 3 weeks later returning to our friends’ house on the coast and it is here that we go right back to the beginning and that dusty bumpy Wattley Hill Road. We loved the property; we viewed its location and could see potential in the house. 5 weeks later we took possession and left Sydney at 3pm in an 8 Tonne truck only to hit a major accident on the F3 which put us back hours. We had arranged to meet the Real Estate agent at the Mobil in Bulahdelah to get the keys, which ended up happening at 1am. He was a good sport! Finally we navigated Wootton Way in pitch black and rain to boot. We were told the next day it had rained nonstop for the preceding week. This of course meant that at 2am when we pulled up outside 176 Newmans Road it was apparent we could not get the truck into the driveway for it was too muddy. Thoughtfully we had packed the mattress in the truck last so it was easy to locate. Unfortunately not so the light switch after we entered the house. It took us about 10mins to get the lights on, all the while hearing loud drip, drip, splosh noises. Upon the light switch being located we realized that our house was not water tight, that is to say the roof leaked like a sieve! Grant exclaimed that our tent we lived in while working on the American “Survivor” series was imminently more weather proof than the apparent sieve we had just purchased. Back to the truck to find a box marked ‘kitchen’ and pots and bowls to place around. Not bad for a house previously owned by a roofing plumber!

Anyway the last 4 years at ‘blossom valley farm’ have been a joy by comparison to our initial arrival in Wootton at 2am on that dark wet night. We have spent this time building our blossom eco skin care business, converting the ‘sleep out’ into a slick manufacturing space, attending many local and not so local markets, exhibiting at Expos, running our online store, wholesaling our products and most recently and finally, beginning restoration work on our house. We have recently purchased a couple of brood mares from which we are breeding Warmblood horses, using the fabulous stallion BB Flemminghton from Bonnie Brae Stud, by the way, also on Newmans Road. All going well early next year we will have our first foal on the ground. Jhet of course is loving being in the country, having animals around, space to run and especially as he puts it ‘the getting muddy bit’!!

Written by Monique Finlay

Coolongolook Public School

- We have several new enrolments in 2012! Welcome to Caylab, Skye, Claire, Jesse, Sarah, Katelyn, Lilly and Hayley.
- Recently we farewelled Mrs Symons from University of Newcastle, who completed her Third Year Practicum with us. We wish Mrs Symons the very best in her future teaching career!
- **Sustainable Learning** This year we are looking at sustainability in several areas. A vegetable garden; installation of solar power; thrifter use of power; ramping up the recycling (i.e., keeping those compost worms happy), and more careful use of school stationery items.
- An Opinion Poll on the Application for National Chaplaincy and Student Welfare program 2012 has received unanimous support.
- Congratulations to all the senior students who participated in the Small Schools Swimming Carnival in February.
- **Coolongolook School Recipe Book** We invite every family to contribute ONE of their favourite recipes. If you know any family who has attended the school it would be appreciated if you could ask for their special recipe.
- Mrs Oxford is embarking on a huge project of collecting and collating the history of our school.
- Our **Fun Run** will be held Term 2, **Friday 25th May**.
- **Holiday dates** Please note the last day of first term is 5th April with school resuming on 24th April. Easter public holidays run from 6th to 9th April.

School Contact Details

Lombard Street Coolongolook 2423

Principal: Pamela Everingham

Phone: 4997 7183

Fax: 4997 7232

Email: coolongolo-p.school@det.nsw.edu.au

Website: coolongolo-p.schools@nsw.edu.au

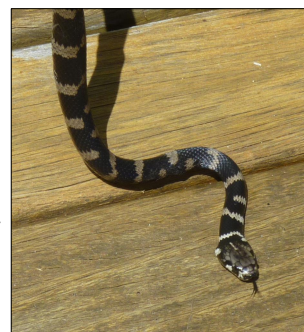


WOOTTON SUSTAINABLE AGRICULTURAL GROUP

At this stage, the likely next meeting date will be **Saturday, April 21**, topic **Plants**
If anyone would like to join contact Karen Bee at Council 65917305

Watch out for this snake!

Jim O'Connor sent us this picture of a Stephens' Banded Snake he found wandering around his garden. These snakes are grey to black with brown or cream cross bands. It usually lives in rainforests. It is largely nocturnal, spends most of its time up trees or shelters in tree hollows, under loose bark and ground cover. It breeds between December and February. This species is potentially dangerous. Bites can cause general reactions such as headaches and nausea. If bitten, apply first aid and seek urgent medical attention. (Information found on internet)



DIRECTORY

Accommodation

Too many visitors! **Wootton Guest House** 4 a/c bedrooms with ensuites & balconies, reasonable rates.
www.woottonguesthouse.com.au
Peter & Leanne **49977201 0407974420**

Building & Maintenance Contractor
Solutions to building problems Lic 631C
Rob McDougall **0427 955958 49977335**

Bulahdelah Post office Bill pay, banking, phones & gifts. HCCU banking, Business and Private Mon-Fri 9am-5pm
Sat 9am-12noon Ph/Fax **0249974283**

Computer services
Software installation, cleanup, Website design, Hardware upgrade, Custom build! New parts warranty. Peter **49977223**

Earth Moving
Excavation, demolition, auger, rock hammer, grab bucket, tipper truck hire
David Knezevic **49977402 0410 441428**

Health
Take charge of your health with alternative medicine, nutrition and herbs.
Karen Carran **0427 177 172**

Horses Gembiras Docs Onyx dual sire registered stallion AQHA-A17174 ASH-SM133207 Standing at stud: progeny usually for sale. Gembira Horses
49977335 0419201913

Plumber
Richard Green Plumbing All plumbing, drainage, gas & LPG fitting, metal roofing domestic, commercial, industrial Lic no. 53903C **0418 618583 65591555**

Real Estate
Edes Real Estate Pty Ltd - Stock & Station Agent & Property Management Brian Ede www.edes.com.au **49974566 49977180(A/H) 0408492883**

Removals

Dave Barker Removals
"Moving with Care" **49974675**

Renewable Energy
STS Services P/L Solutions toward Sustainability, Solar systems Grid connect or Stand alone Lic 27928C Accredited F524
49977167 0417369670

Tractor Work
Slashing & Tidying Up
Paul & Hazel **49977150**

Advertising rates for 2011/2012 for the Wootton Valley News Directory are

**\$55 for Non-members,
\$45 Members - per 4 line ad space**

These businesses support this newsletter. Please support them wherever possible.

**New advertisers welcome
contact the editor.**

Mail Delivery of the Wootton Valley News

We are still hearing that some residents are not having their newsletter delivered. Contact Forster Post Office direct if you want it delivered. Alternatively you can pick it up at the Brush Turkey Cafe on a Sunday, subscribe at a cost of \$11 per annum or download it from
www.wootton.org.au.

**Next Wootton Valley News
deadline is
15th May, 2012**